



Office of the Council for the
Ongoing Government of Tokelau
Tokelau National Statistics Office

Kuata o Māti, 2020 Fuafakatatau o na Tau o Koloa ma Kaukaunaga a Tokelau (FTKK)

Vaega taua

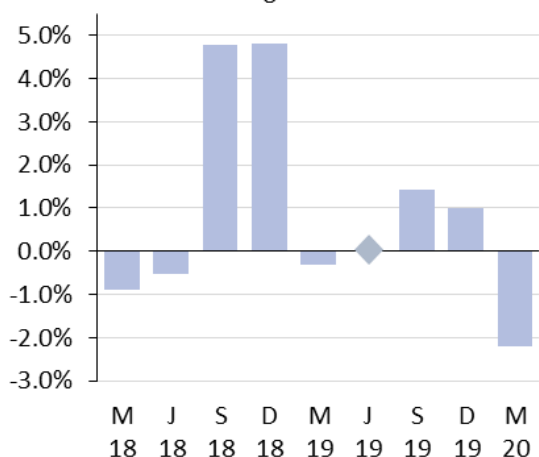
I te kuata o Māti 2020 na paku ai i he 2.2 pahene te Fuafakatatau o na Tau o Koloa ma Kaukaunaga.

- E fakatuha ki he 1.0 pahene na mahiki ai i te kuata kua teka.
- Ko te kulupu o na Meakai ma vaiinu te na lahi to na hao ki te pakū o te FTKK i te 1.4 pahene, ma na fakaitiitia na tau o na koloa ienei i he 4.5 pahene.
- Na te tahi huiga lahi na hohoko ifo ki ei ko te kulupu o Felakuakiga na pakū i he 9.1 pahene, e 0.7 pahene tokehe tona hao ki te aofaki katoa o te FTKK.
- Na mahiki pito maualuga ki na tau ona koloa na hau mai te kulupu o na Koloa ma na kaukaunaga kehekehe i he 1.6 pahene, ma na hao ai i he 0.1 pahene tona hao ki te aofakiga katoa o te FTKK.

Mai te kuata o Māti 2019 ki te kuata o Māti 2020, na hikitia te FTKK i he 0.2 pahene. E fakatuha tenei hikitagā ki te 2.1 pahene na hiki ai te FTKK mai te kuata o Tēhēma 2018 ki te kuata o Tēhēma 2019.

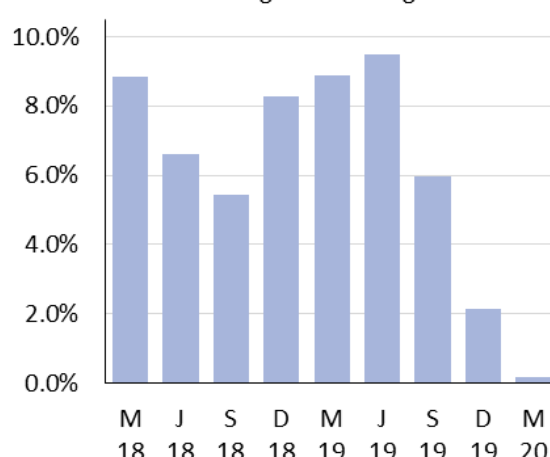
Ko te FTKK e fua ai te huiga ona koloa ma na kaukaunaga e fakatau e na kaiga tautokatahi i Tokelau. E fakamaumau e te Ofiha o Fuainumela Fakamaumau o Tokelau (TNSO) na tau o na koloa mai na fale koloa vena ma na koloa fau fale (bulk store) mai na motu e tolu. Fakatahi ai ma na tau ona koloa ma na kaukaunaga tau Felakuakiga, Malohiaga ma Fehokotakiga.

**Fuafakatatau ona Koloa ma
Kaukaunaga o Tokelau**
Huiga taki kuata



Fakamatalaga mai: Ofiha o Fuainumela Fakamaumau o Tokelau

**Fuafakatatau ona Koloa ma
Kaukaunaga o Tokelau**
Huiga taki tauhaga



Fakamatalaga mai: Ofiha o Fuainumela Fakamaumau o Tokelau

Taimalie Kele Lui
National Statistician

30 Apelila 2020

Fakamatalaga

Ko na vaega i lalo e tuku atu ai ni fakamatalaga auiliili agai ki te Fuafakatatau ona Tau o Koloa ma Kaukaunaga i Tokelau:

- [Ko te FTKK o te kuata o Māti 2020 na pakū i he 2.2 pahene](#)
- Ko Koloa Meakai ma Vaiinu na paku i he 4.5 pahene Ko te kulupu ote ava malohi ma te hikaleti na paku i he 0.8 pahene
- Kotokotoga o na hao o na tahi kulupu pe ko na vaega ki te FTKK o te kuata
- Afainaga ona koloa ma mahiki ma paku na tau
- [Hikitia te FTKK mo te tauhaga agai ki te kuata o Māti 2020 i he 0.2 pahene](#)

Ko te FTKK o te kuata o Māti 2020 na pakū i he 2.2 pahene

Ko te kuata o Māti 2020 na pakū ai te FTKK i he 2.2 pahene; e fakatuha tenei pakū ki he hikitaga i he 1.0 pahene na i iei i te kuata taluai nei ia Tēhēma.

E tuha e tolu ia kulupu mai na kulupu e iva na matau na hao ki te pakū o te aofakiga o te FTKK, e lua na fakamaugia ai ni hikitia, ka ko na tahi kulupu e he ki iei he afainaga ki te aofakiga o te FTKK o te kuata.

Kulupu	Pahene hao ki te FTKK taki kuata
01. Meakai ma vaiinu	-1.4%
02. Ava malohi ma te hikaleti	-0.3%
03. Kie lavalava ma hevae	0.0%
04. Fale, huavai, eletihe, kēhi ma ietahi huāū	0.0%
05. Meāfale, kope faigaluega mo te fakaleleiga o kaiga	0.1%
07. Felakuakiga	-0.7%
08. Fehokotakiga	0.0%
09. Fakafiafiaga ma aganuku	0.0%
12. Koloa kehekehe ma kaukaunaga	0.1%
Aofakiga o te FTKK	-2.2%

Matau: E ono he maua te aofakiga tonu o te FTKK i na pahene ienei ona ai ko te fakakatoatoaga o na pahene ki he numela katoatoa (rounding).

Na pakū te tau o na koloa Meakai ma vaiinu i he 4.5 pahene

Ko na tau o na Meakai ma vaiinu na pakū i he 4.5 pahene ite kuata tenei, ma na hao ai ki he pakū e 1.4 pahene tokehe ki te aofaki o te FTKK mo te kuata.

Ko na koloa takitahi pe ko na vaega kulupu mai tenei kulupu na lahi to latou hao ki tenei pakū (4.9 pahene) na maua mai i na tau pakū:

- Moa (pakū i he 26 pahene)
- Povi (pakū i he 30 pahene)
- Mamoe (paku i he 5.4 pahene).

Ko na koloa takitahi ite kulupu tenei na lahi na hao ki te agai ki luga ote kulupu na hau ite maualuluga ona tau ona koloa ienei:

- Apaika, mackerel (hiki i he 33 pahene)
- Pepa huhu – Long Life (hiki i he 4.2 pahene)
- Falaoa mata (hiki i he 5.0 pahene).

Ko te hikitaga o na tau o koloa mai te kulupu o na Vaiinu (hiki i he 2.1 pahene) na lahi mafua mai i te kofe (hiki i he 10 pahene) ma na fagu vai (hiki i he 34 pahene).

Ko na tau o te kulupu o te Ava malohi ma te hikaleti na pakū i he 0.8 pahene

Ko na tau o te kulupu o te Ava malohi ma te hikaleti na pakū i he 0.8 pahene, ma na vena ona afaina ai te aofaki o te FTKK mo tenei kuata i he pakū e 0.3 pahene. Ko tenei pakū e fakatuha ki te 0.8 pahene na hao ai tenei kulupu i te kuata o Tēhēma 2019.

Kotokotoga o na hao o na tahi kulupu ki te FTKK o te kuata

Na lahi te huiga na matau i na tau mo te Felakuakiga, e tuha na pakū i he 9.1 pahene, ma na vena ai ona afaina te FTKK o te kuata tenei i he paku e 0.7 pahene. Ko te mafuaga lahi lava o tenei huiga ko na tau pakū mo na pāhehe vakalele mo tenei kuata.

Ko na kulupu ienei ko na Meāfale ma na kope faigaluega mo te fakaleleiga o kaiga, vena ma na Koloa kehekehe ma kaukaunaga, na kitea te hikitia o na tau o na koloa. Na hiki i he 1.4 pahene te vaega muamua, ma hiki te tahi vaega i he 1.6 pahene. Ko na kulupu uma ienei e lua na hao i he 0.1 pahene ki te aofakiga o te FTKK mo tenei kuata.

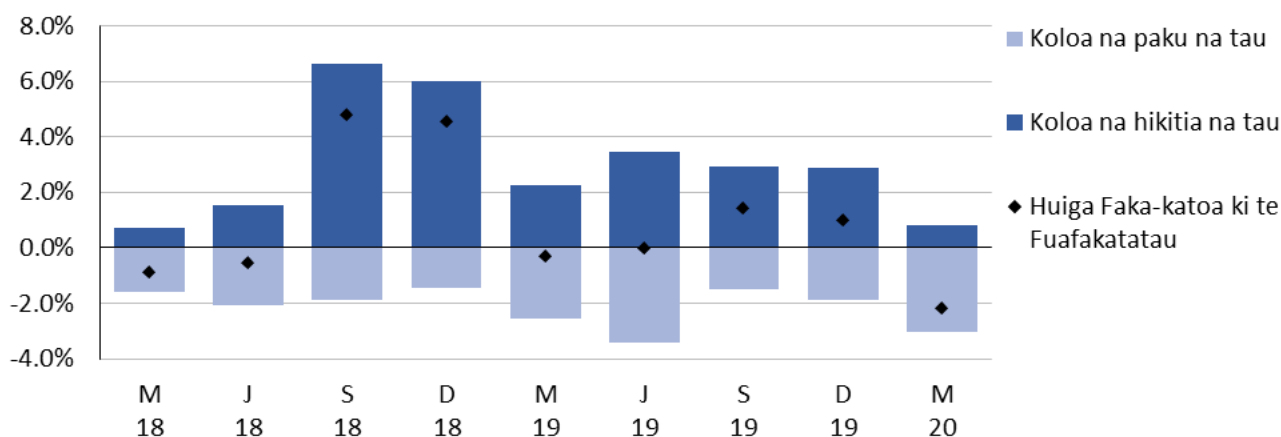
Ko ietahi kulupu e lua (Fale, huavai, eletihe, kēhi ma ietahi huāū) na hiki i he 0.4 pahene, ma (Fakafiafiaga ma aganuku) pakū i he 0.8 pahene. E he lahi te afainaga o na kulupu ienei e lua ki te aofakiga o te FTKK. E heki iei he huiga ki na tahi kulupu e lua ko te Fehokotakiga ma Kie lavalava ma hevae.

Huiga e mafua mai ina koloa e hikitia ma pakū na tau

E fakahino mai e te kalafa i lalo na huiga e mafua mai ina koloa e hikitia ma paku na tau ihe vaitaimi: ko te afainaga katoa ko he 2.2 pahene pakū ki te aofaki o te FTKK mo te kuata o Māti 2020.

Pahene ona hao ko te Fuafakatatau ona Koloa ma Kaukaunaga ihe Vaitaimi

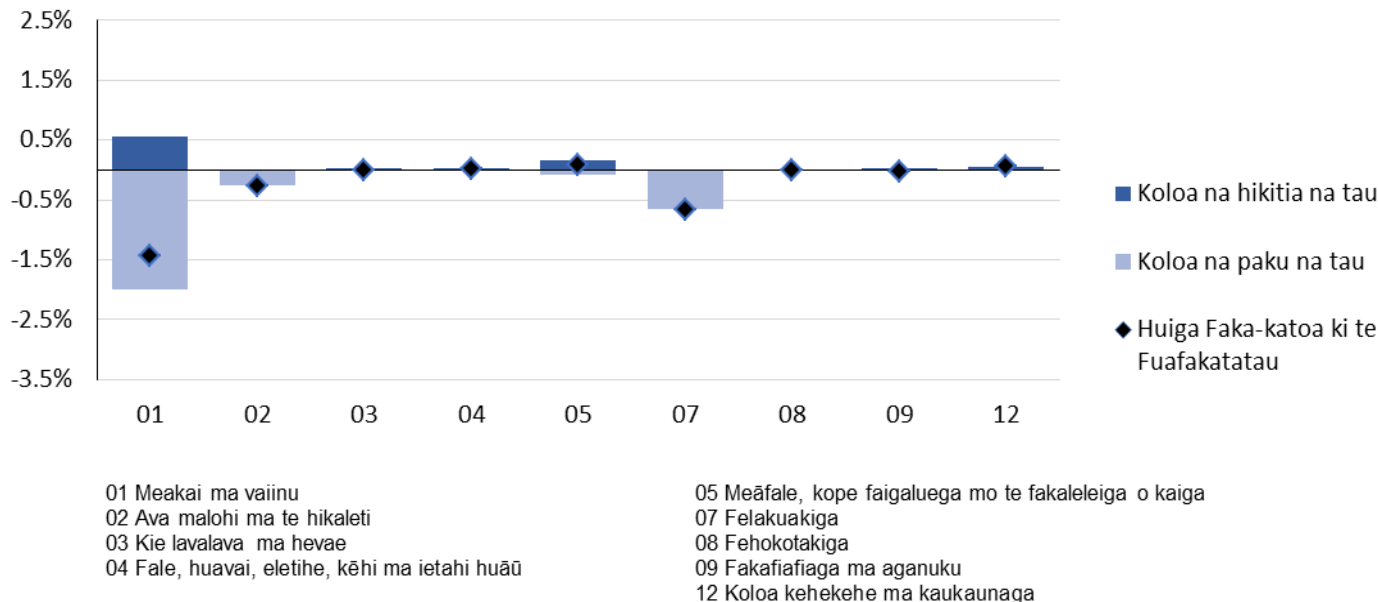
Huiga taki kuata ki te kuata o Mati 2020



Fakamatalaga mai: Ofiha o Fuainumela Fakamaumau o Tokelau

E fakaali atu i te kalafa i lalo na huiga o te fekehekenakiga o na tau o koloa i tenei kulupu mo te kuata tenei.

Pahene ona hao ki te Fuafakatatau ona Koloa ma Kaukaunaga ina kulupu
ite kuata o Mati 2020



Fakamatalaga mai: Ofiha o Fuainumela Fakamaumau o Tokelau

Hikitia i he 0.2 pahene te FTKK mo te tauhaga agai ki te kuata o Māti 2020

Na hikitia i he 0.2 pahene te FTKK mo te tauhaga ki te ki te kuata o Māti . E fakatuha ki te 2.1 pahene o te pahene o tau faka-te-tauhaga (annual inflation rate).

Ko te kulupu na lahi to na hao ki tenei hikitaga ko te kulupu o te Ava malohi ma te hikaleti, na hao ki ei te 0.9 pahene ki te FTKK mo te tauhaga: ko te 2.6 pahene hikitia na pogai mai ina tonu a na Taupulega ke hikitia te tau ote hikaleti. Ko te hikitia o na tau i te kulupu o Felakuakiga na hikitia i he 7.8 pahene, ona ko na huāū ma gako mo na kope Felakuakiga a kaiga (na hao i he 0.5 pahene ki te FTKK mo te tauhaga).

Na pakū na tau i te kulupu o na Meakai ma vaiinu i he 1.3 pahene, ma na vena ona hao ai i he pakū e 0.4 pahene kit e FTKK mo te tauhaga.

Ko na vaega kulupu na lahi te hao ki tenei pakū ona ai ko te pakū o na tau ko te:

- Moa (pakū i he 27 pahene)
- Alaiha (pakū i he 27 pahene)
- Huka (pakū i he 26 pahene).

Ko na vaega kulupu na lahi to latou hao ki te hikitaga o te FTKK mo te tauhaga ona ko na tau hiki ko te:

- Mamoe (hiki i he 68 pahene)
- Pepa huhu – Long Life(hiki i he 15 pahene)
- Pata (hiki i he 63 pahene).

E lua ni ietahi kulupu na kitea te hikitia o na tau o koloa i te tauhaga ke pa ki te kuata o Māti. Na hikitia i he 0.8 pahene na tau o koloa i te kulupu o na Fale, huavai, eletihe, kēhi ma ietahi huāū. Na hikitia foki na tau o Koloa ma kaukaunaga kehekehe i he 2.4 pahene. Na hao i he 0.1 pahene na kulupu e lua ienei ki te FTKK mo te tauhaga.

E tolu ia kulupu na kitea te pakū o tau o koloa i te tauhaga ke pa ki te kuata o Māti 2020. Ko tau o koloa i te kulupu o Meāfale ma kope faigaluega mo te fakaleleiga o kaiga na pakū i he 11.6 pahene, ma na hao ai i he 0.8 pahene pakū ki te aofaki o te FTKK mo te tauhaga. Ko tau o koloa i te kulupu o Fakafiafiaga ma aganuku na paku foki i he 6.0 pahene, ma na vena foki ona hao ihe pahene pakū e 0.1 ki te aofaki o te FTKK mo te tauhaga. Ko te tahi kulupu o Kie lavalava ma hevae na vena foki ona pakū na tau o koloa i he 0.9 pahene, kae he lahi tona afainaga ki te FTKK mo te tauhaga. Ko tau o koloa i te kulupu o Fehokotakiga e heki iei ni huiga ki ei.

Uiga o Kupu

Fakamatalaga agai ki te Fuafakatatau o Tau o Koloa ma Kaukaunaga (FTKK)

Ko te FTKK ko he fuafakatatau o te huiga o na tau o he kete e patino ai na koloa ma na kaukaunaga e fakatau e na kaiga tautokatahi i Tokelau. Ko te fakavehegaga ma te taua o na itukaiga koloa ma kaukaunaga i kete tenei mo te FTKK e tuku mai he ata faka-katoa ona fakafanoga tupe fakafano a kaiga takitahi i Tokelau.

Ko te hini kautu o te FTKK ke fua ma fakamaumau na huiga o tau o ni koloa filifilia ini fale koloa/fale faigaluega i loto ohe vaiitami.. Kafai kua maitau kua iei ni huiga agai ki te lahi pe ko te mamafa, vena ma te manaia pe ko te lelei o he koloa i te kete, e ono fai ai la ni gaoioiga ke mautinoa ai e he afaina lahi te huiga o te tau o te koloa.

Na kamata na lomiga o te FTKK a Tokelau ia Hētema 2012, ma na toe fatu te fakavae (rebase) i a Māti 2017. Ko te piliota fakahino kamata ko te kuata o Māti 2017 (=100.0).

Ko te lihi o koloa ma kaukaunaga i loto o te kete koloa mo te FTKK ma na fakamatalaga agai ki te metotia e fakaaoga ki te fuafuaga o te FTKK e maua uma i te neti "Technical notes: Consumer Price Index" www.tokelau.org.nz/Stats.html.

Ni ietahi uiga kupu

Tau fakahino (price index): E fuafua ai te huiga o na tau mo koloa ma kaukaunaga i te va o ni piliota. E fakaauiiili ki ei na tau o koloa ma kaukaunaga maua mai i ni fale koloa kehekehe.

Piliota fakahino (index reference): Ko te piliota e fakamatea ai te fakatuhathaga o na tau i na piliota kehekehe. Fakatakitakiga, kafai ko te numela fakahino mo he piliota e 115.0, ko tona uiga ko na tau na hikitia i he 15.0 pahene mai te piliota fakahino.

Hao hiki/hao pakū (upward/downward contributions): Ko koloa e takutaku ho i tenei fakamaumauga, ko koloa ia na lahi ho latou hao ki te aofaki o te FTKK.

Ko te hao o he koloa e aofia ai tona mamafa i te fakahino (index) (ko tona taua e fua mai i te lahi o to na hao ki te vaega tupe fakafano a te kaiga ki koloa ma kaukaunaga) ma te lahi o na huiga ki te tau.

Kafai e iei ni koloa e lua e tutuha to la pahene na hikitia ai ite tau, ko te koloa e mamafa to na FTKK e lahi atu ia to na hao ki te aofaki o te FTKK. Ko tenei hao e takua ko te pahene hao (index point).

Piliota fakailoga (Reference period)

Ko tau o koloa mo te kuata o Māti na fakamaopopo mai te va o te Aho 14 Apelila ma te Aho 11 Māti 2020 e na kaufaigaluega a na kau tautua a na nuku takitahi, fakatahi ai ma te kaufaigaluega a te TNSO i Apia.

Tau afiaga (Price influencers)

E iei foki ni tahi mafuaga e ono mafua ai te huiga ki na tau o koloa. Ko ni tahi mafuaga ienei na afaina ai te FTKK mo te kuata vena ma te tauhaga 2020:

- E fakaaoga e Tokelau te tupe Niu Hila, ko tona uiga e fuafua te lahi ma te mafai e Tokelau fakatau koloa i Samoa ki te mamafa o te tupe Niu Hila fakatuha ki te tupe Samoa¹.

¹ The Tokelau Department of Finance tends to fix its exchange rate for the calendar year (currently WST/NZD=1.70), taking out some of the volatility.

- Mai te tauhaga 2013 hove ko koloa uma e fakatau i Tokelau na kaumai mai Samoa. Ko te lahiga o ienei koloa ko ni koloa na toe fakatau atu ki atunuku i fafo, ma na fotu mai i ni tahi atunuku e aofia ai ia Haina, Auhetalia ma Niu Hila. Ko tenei vaega e tupu mai ai te fekehekehenakiga o tau o koloa i kuata takitahi, ma e mafai foki ke mafua mai i na manakoga o te atunuku, kae vena foki fakavaomalo, te maua o koloa, vena foki te fuafuaga o tupe hui. E lahi he afainaga ki te FTKK a Tokelau kafai kua iei ni huiga ki na tau, vena ma te maua pe he maua o koloa i Samoa.
- E fuafua lava e te nuku na tau o ana koloa e fakatau (fakatakitakiga ko te hikaleti, te ava malohi ma na vaiinu), ma e ono tahuhihi.
- I te Fono Fakamua ia Iulai 2017 na talia ai ke fai he lafoga (tax) e 325 pahene mo na hikaleti i te manatu lava ke tipitipi ki lalo te tagohia o te hikaleti, ma vena ai foki o na fehoahoani ki te fakaitiitiga o na famai he pēhi. Talu mai ai nei, e fai lava ma hikihiki na tau o na hikaleti e na Taupulega takitahi. Ona ai ko te tulaga o te mamafa o te hikaleti i te FTKK, ko ho he huiga i to latou tau e afaina lahi ma lahi ai te huiga ki te aofaki o te FTKK e ve ona iloa mai te 2017. I te tau tukutonuga lava o te he paleni lahi ona ai ko na polihi o tau o te hikaleti, fakatahi ai ma te heahea maua pe hapalai te hikaleti ina koloa, e fua fakalua te FTKK. E fua muamua ke aofia na hikaleti, ma toe fua ai kae he aofia ai na hikaleti. E fakafaigofie ai ma holotonu ai ki te “Tobacco free Tokelau 2020”, ma vena ai ona he toe kaumai ai te hikaleti e na koloa ki Tokelau.

Lavelaveaga

Na fai tenei lomiga ma te maeaea lelei i te fatuga, te iloiloga ma te tuhiga o na fakamatalaga. E he mautinoa e te TNSO e matuai heai he pahala i tenei lomiga, e fakamalie atu ai e he ono lavelavea tenei mataeke kafai kua pahala atu he mea i tenei lomiga.

Taimi

Ko na lomiga ienei e fakahalalau i te initaneti e he tahi mataeke, ma e he i lalo o te kikilaga a te TNSO. E he pakū la kit e TNSO kafai kua tuai te fakahalalau atuga o ienei lomiga.

[ends]