



Office of the Council for the
Ongoing Government of Tokelau
Tokelau National Statistics Office

Kuata o Hetema, 2020 Fua fakatatau o nā Tau o Koloa ma Kaukaunaga a Tokelau (FTKK)

Vaega taua

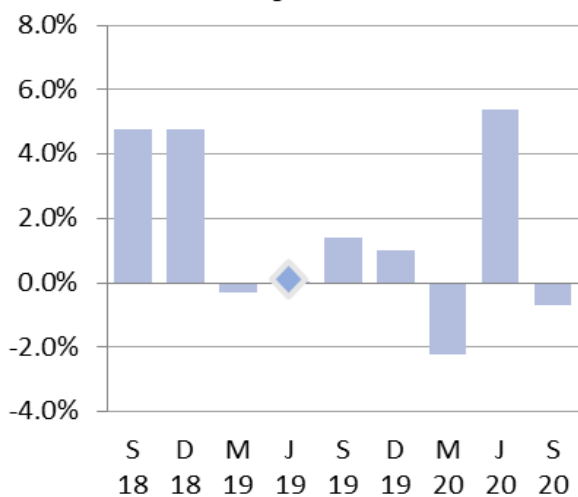
Ko he fakatuhaga tēnei o nā kuata o Hetema 2020 ma Luni 2020:

- Na pakū te FTKK i he 0.7 pahene, fakatuha ki te 5.4 pahene (iloiloga fou) na mahiki ai i te kuata taluai nei.
- Ko te kulupu na lahi tona hao pakū e 0.4 pahene ko te Meakai ma vaiinu, i te pakū o nā tau o koloa i te 1.3 pahene.
- Ko te huiga lahi na kitea i te kulupu o Meāfale, kope faigaluega mō te fakaleleiga o kaiga, na pakū i he 3.8 pahene, ma na vērā ai ona hao pakū ai i he 0.2 pahene ki te FTKK o te kuata tēnei.
- Ko te kulupu o Koloa kehekehe ma kaukaunaga na lahi to na hao e 0.1 pahene, ona ko te mahiki o tau o koloa i he 3.1 pahene.

Mai te kuata o Hetema 2019 ki te kuata o Hetema 2020 na mahiki ai te FTKK i he 3.4 pahene. E fakatuhagia tēnei ki te 5.6 pahene (iloiloga fou) na hikitia ai mai te kuata o Luni 2019 ki te kuata o Luni 2020.

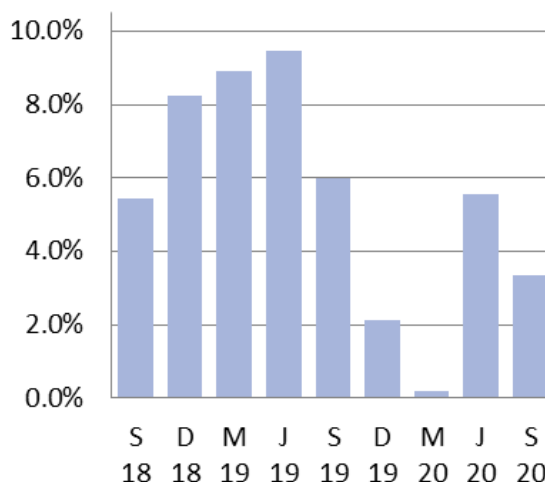
Ko te FTKK e fua ai te huiga o nā koloa ma nā kaukaunaga e fakatau e nā kaiga tautokatahi i Tokelau. E fakamaumau e te Ofiha o Fuainumela Fakamaumau o Tokelau (TNSO) na tau o nā koloa mai nā fale koloa vērā ma nā koloa fau fale mai nā motu e tolu. Fakatahi ai ma nā tau o na koloa ma nā kaukaunaga tau Felakuakiga, Malohiaga ma Fehokotakiga

**Fuafakatatau o na tau o Koloa
ma Kaukaunaga o Tokelau**
Huiga taki kuata



Fakamatalaga mai: Ofiha o Fuainumela
Fakamaumau o Tokelau

**Fuafakatatau o na tau o Koloa
ma Kaukaunaga o Tokelau**
Huiga taki tauhaga



Fakamatalaga mai: Ofiha o Fuainumela
Fakamaumau o Tokelau

Taimalie Kele Lui
National Statistician

31 Oketopa 2020

Fakamatalaga

Ko nā vaega i lalo e tuku atu ai ni fakamatalaga auiliili agai ki te FTKK i Tokelau:

- [Pakū i he 0.7 pahene te FTKK o te kuata o Hetema 2020](#)
- [Kulupu o Meakai ma vaiinu na pakū i he 1.3 pahene i tēnei kuata](#)
- [He 0.2 pahene te na pakū ai te kulupu o Ava mālohi ma te hikaleti](#)
- [Kotokotoga o nā hao o nā tahi kulupu ki te FTKK o te kuata tēnei](#)
- [Huiga ona ko nā koloa na mahiki ma nā koloa na pakū nā tau](#)
- [Hikitia te FTKK i he 3.4 pahene mo te tauhaga agai ki te kuata o Hetema 2020](#)

Pakū i he 0.7 pahene te FTKK o te kuata o Hetema 2020

Ko te FTKK o te kuata o Hetema na pakū i he 0.7 pahene, e fakatuha tēnei pakū ki te 5.4 pahene na mahiki ai i te kuata o Luni 2020.

E tuha e fā ia kulupu mai na kulupu e iva na kitea te pakū o nā pahene hao ki te FTKK. E lua ia kulupu na mahiki, e fokotahi e heki kitea he huiga, ma ko ietahi kulupu e heki iei ho lātou afainaga ki te aofakiga o te FTKK mō te kuata tēnei.

Kulupu	Pahene hao taki kuata ki te FTKK
01. Meakai ma vaiinu	-0.4%
02. Ava malohi ma te hikaleti	-0.1%
03. Kie lavalava ma hevae	0.0%
04. Fale, huavai, eletihe, kēhi ma ietahi huāū	0.1%
05. Meāfale, kope faigaluega mo te fakaleleiga o kaiga	-0.2%
07. Felakuakiga	-0.1%
08. Fehokotakiga	0.0%
09. Fakafiafiaga ma aganuku	0.0%
12. Koloa kehekehe ma kaukaunaga	0.1%
Aofakiga o te FTKK	-0.7%

Matau: E ono he maua te aofakiga tonu o te FTKK i nā pahene ienei ona ai ko te fakakatoatoaga o nā pahene ki he numela katoatoa (rounding).

Kulupu o Meakai ma vaiinu na pakū i he 1.3 pahene i tēnei kuata

Ko tau o koloa i te kulupu o Meakai ma vaiinu na pakū i he 1.3 pahene, ma na vēna ona hao ai i he pahene pakū e 0.4 ki te FTKK o te kuata tēnei.

Ko nā kulupu takitahi pe ko nā vaega kulupu na lahi to lātou hao pakū (1.3 pahene) ki tēnei kulupu ona ko te pakū o nā tau ko nā:

- Alaiha (pakū i he 14 pahene)
- Moe (pakū i he 4.7 pahene)
- Mamoe (flaps) (pakū i he 14 pahene)

Ko nā vaega kulupu na lahi to lātou hao na mahiki ai te aofaki aoao o tenei kulupu ona ko te mahiki o nā tau ko na:

- Mamoe (chops) (hiki i he 15 pahene)
- Apa tuna (hiki i he 14 pahene)
- Meakai inu ti (cereal) (hiki i he 34 pahene)

He 0.2 pahene na pakū ai te kulupu o Ava mālohi ma te hikaleti

Ko tau o koloa i te kulupu o Ava malohi ma te hikaleti na pakū i he 0.2 pahene, ma na vērā ona hao ai i he pahene pakū e 0.1 ki te pahene pakū o te kuata tēnei e 0.7. Ko tēnei pakū na lahi mafua ona ko te pakū o nā tau i he 0.7 pahene o nā hikaleti i nā motu.

E fakatuha tēnei ki te 12.6 pahene na mahiki ai nā tau i te kuata o Luni 2020, ma na vērā ona hao ai i he 4.4 pahene ki te FTKK o te kuata tēnā.

Kotokotoga o nā hao o nā tahi kulupu ki te FTKK o te kuata tēnei

Na kitea te pakū o nā tau i te kulupu o Felakuakiga (1.9 pahene), ma na vērā ona hao ai i he pahene pakū e 0.1 ki te FTKK o te kuata. Na vērā foki ona pakū nā tau i te kulupu o Meāfale, kope faigaluega mo te fakaleleiga o kaiga (3.8 pahene), oi na hao ai i he pahene pakū e 0.2 ki te FTKK o te kuata tēnei.

Na mahiki na tau o koloa i te kulupu o Fale, huavai, eletihe, kēhi ma ietahi huāū (0.9 pahene), vērā ma te kulupu o Koloa kehekehe ma kaukaunaga (3.1 pahene), ma na hao tutuha ai iēnei kulupu i he 0.1 pahene ki te FTKK o tēnei kuata.

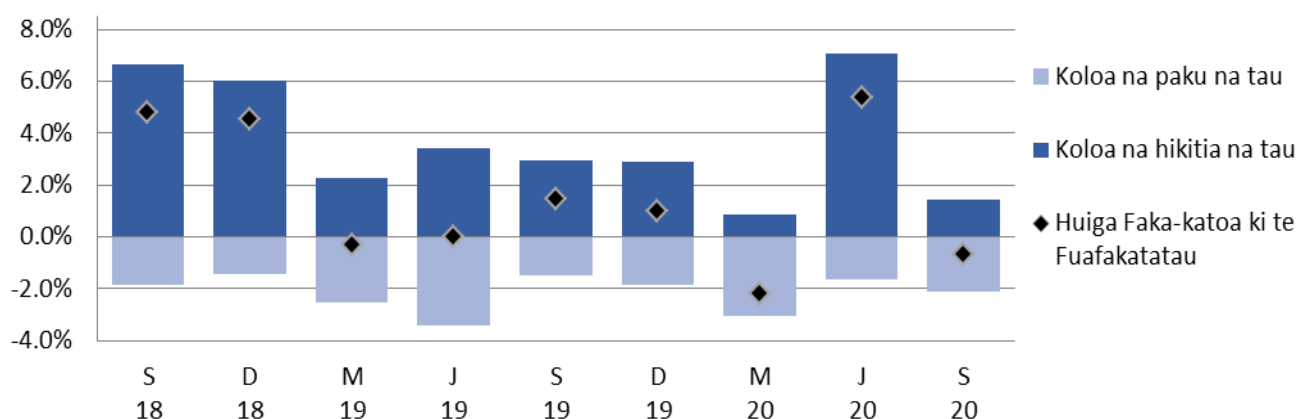
Ko nā tahi kulupu e totoe mai ai e heki lahi ni huiga kiei i tēnei kuata. Ei loto ai te kulupu o Kie lavalava ma hevae (pakū i he 0.3 pahene), ma te kulupu o Fakafiāfiāga ma aganuku (pakū i he 2.3 pahene). E heki lahi he afainaga o nā kulupu e lua iēnei ki te FTKK o tēnei kuata. Ko te kulupu o Fehokotakiga e hēki i ei he huiga ki ei.

Huiga ona ko nā koloa na mahiki ma nā koloa na pakū na tau

E fakamanino mai i te kalafa i lalo nā huiga e mafua mai i nā koloa na hikitia ma nā koloa na pakū nā tau. Ko te afainaga katoa na pakū ai i he 0.7 pahene te aofaki o te FTKK mo te kuata tēnei o Hetema 2020.

Pahene ona hao ko te Fuafakatatau o na tau o Koloa ma Kaukaunaga ihe Vaitaimi

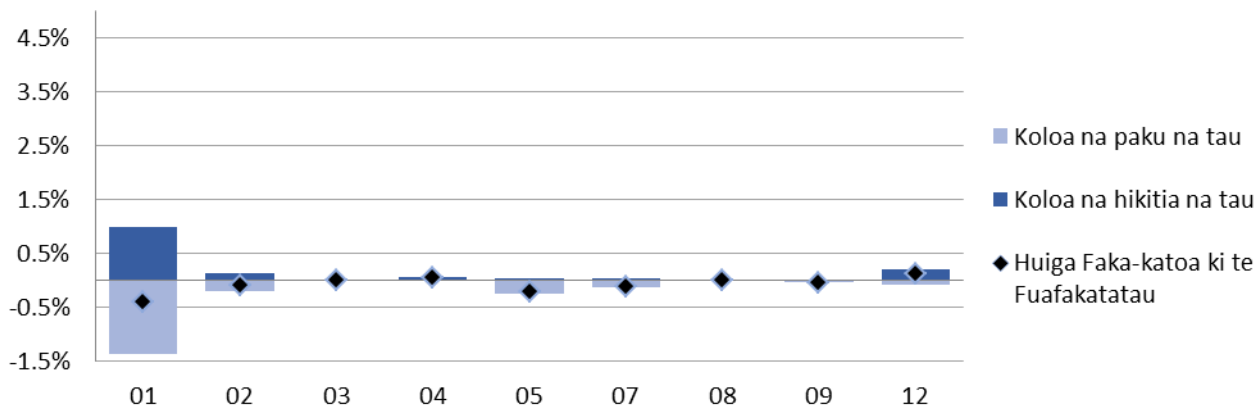
Huiga taki kuata ki te kuata o Hetema 2020



Fakamatalaga mai: Ofiha o Fuainumela Fakamaumau o Tokelau

Ko te kalafa i lalo ko nā afainaga ki nā kulupu takitahi na mahiki nā tau o koloa ma nā kulupu na pakū na tau i tēnei kuata.

**Pahene ona hao ki te Fuafakatautau o na tau o Koloa ma Kuakaunaga ina kulupu
ite kuata o Hetema 2020**



01 Meakai ma vaiinu

02 Ava malohi ma te hikaleti

03 Kie lavalava ma hevae

04 Fale, huavai, eletihe, kēhi ma ietahi huāū

05 Meāfale, kope faigaluega mo te fakaleleiga o kaiga

07 Felakuakiga

08 Fehokotakiga

09 Fakafiafiaga ma aganuku

12 Koloa kehekehe ma kaukaunaga

Fakamatalaga mai: Ofiha o Fuainumela Fakamaukau o Tokelau

Hikitia te FTKK i he 3.4 pahene mo te tauhaga agai ki te kuata o Hetema 2020

Na mahiki ki luga te FTKK mo te tauhaga agai ki te kuata o Hetema 2020 i he 3.4 pahene. E fakatuhagia tēnei mahiki ki te 5.6 pahene o te tauhaga ki te kuata o Luni 2020.

Ko te kulupu o te Ava mālohi ma te hikaleti na pito hili ona lahi tona hao i he 4.8 pahene kite FTKK o te tauhaga, ona ai ko te mahiki o tau o hikaleti i he 18 pahene.

Ko tau o koloa i te kulupu o Meakai ma vaiinu na pakū i he 1.1 pahene ma na hao ai i he 0.4 pahene pakū ki te FTKK mo te tauhaga.

Ko koloa takitahi na lahi ai te pakū o te FTKK mai te kulupu mea tau meakai ko na:

- Moa (pakū i he 9.7 pahene)
- Alaiha (pakū i he 12 pahene)
- Haimini (pakū i he 12 pahene)

Ko na koloa takitahi ienei i nā koloa tau meakai na lahi to lātou pahene hao i te hikitaga:

- Apa tuna (hiki i he 32 pahene)
- Mamoe (chops) (hiki i he 7.1 pahene)
- Apa pihupo (hiki i he 9.0 pahene).

Ko tau o koloa i te kulupu o Meāfale, kope faigaluega mo te fakaleleiga o kaiga na pakū i he 10 pahene, ma na hao ai i he pahene pakū e 0.6 ki te pahene o tau faka-te-tauhaga (annual inflation rate). Na pakū foki na tau i te kulupu o Felakuakiga i he 2.6 pahene, ma na vēnā ai ona hao i he 0.2 pahene pakū kite FTKK o faka-te-tauhaga.

E he lalahi nā hao pakū mai ietahi kulupu ki te FTKK o te tauhaga ona ko nā tau o koloa. Ei loto ai te kulupu o Kie lavalava ma hevae (pakū i he 2.8 pahene); te kulupu o Fale, huavai, eletihe, kēhi ma ietahi huāū (pakū i he 1.0 pahene); vērā ma te kulupu o Koloa kehekehe ma kaukaunaga (pakū i he 1.6 pahene). Ko kulupu uma iēnei na hao tutuha i he pahene pakū e 0.1 kite FTKK o te tauhaga tēnei. Ko te kulupu o Fakafiāfiaga ma aganuku e hēki lahi hona afainaga ki te FTKK o te tauhaga, ma heki iei he huiga ki te kulupu o Fehokotakiga.

Uiga o Kupu

Fakamatalaga agai ki te Fuafakatatau o Tau o Koloa ma Kaukaunaga (FTKK)

Ko te FTKK ko he fuafakatatau o te huiga o nā tau o he kete e patino ai nā koloa ma nā kaukaunaga e fakatau e nā kaiga tautokatahi i Tokelau. Ko te fakavehegaga ma te taua o nā itukaiga koloa ma kaukaunaga i kete tēnei mo te FTKK e tuku mai he ata faka-katoa o na fakafanoga tupe fakafano a kaiga takitahi i Tokelau.

Ko te hini kautu o te FTKK ke fua ma fakamaumau nā huiga o tau o ni koloa filifilia ini fale koloa/fale faigaluega i loto ohe vaitaimi. Kafai kua maitau kua iei ni huiga agai ki te lahi pe ko te mamafa, vēnā ma te manaia pe ko te lelei o he koloa i te kete, e ono fai ai la ni gaoioiga ke mautinoa ai e he afaina lahi te huiga o te tau o te koloa.

Na kamata na lomiga o te FTKK a Tokelau ia Hētema 2012, ma na toe fatu te fakavae (rebase) i a Māti 2017. Ko te piliota fakahino kamata ko te kuata o Māti 2017 (=100.0).

Ko te lihi o koloa ma kaukaunaga i loto o te kete koloa mo te FTKK ma nā fakamatalaga agai ki te metotia e fakaaoga ki te fuafuaga o te FTKK e maua uma i te neti “Technical notes: Consumer Price Index” www.tokelau.org.nz/Stats.html.

Ni iētahi uiga kupu

Tau fakahino (price index): E fuafua ai te huiga o nā tau mo koloa ma kaukaunaga i te va o ni piliota. E fakaauiiili ki ei nā tau o koloa ma kaukaunaga maua mai i ni fale koloa kehekehe.

Piliota fakahino (index reference): Ko te piliota e fakamatea ai te fakatuhatuhaga o nā tau i na piliota kehekehe. Fakatakitakiga, kafai ko te numela fakahino mō he piliota e 115.0, ko tona uiga ko nā tau na hikitia i he 15.0 pahene mai te piliota fakahino.

Hao hiki/hao pakū (upward/downward contributions): Ko koloa e takutaku ho i tēnei fakamaumauga, ko koloa ia na lahi ho lātou hao ki te aofaki o te FTKK.

Ko te hao o he koloa e aofia ai tona mamafa i te fakahino (index) (ko tona taua e fua mai i te lahi o to nā hao ki te vaega tupe fakafano a te kaiga ki koloa ma kaukaunaga) ma te lahi o nā huiga ki te tau.

Kafai e iei ni koloa e lua e tutuha to la pahene na hikitia ai i te tau, ko te koloa e mamafa to na FTKK e lahi atu ia to na hao ki te aofaki o te FTKK. Ko tēnei hao e takua ko te pahene hao (index point).

Piliota fakailoga (Reference period)

Ko tau o koloa mo te kuata o Māti na fakamaopopo mai te va o te Aho 14 Apelila ma te Aho 11 Māti 2020 e nā kaufaigaluega a nā kau tautua a na nuku takitahi, fakatahi ai ma te kaufaigaluega a te TNSO i Apia.

Tau afiaga (Price influencers)

E iei foki ni tahi mafuaga e ono mafua ai te huiga ki nā tau o koloa. Ko ni tahi mafuaga ienei na afaina ai te FTKK mo te kuata vēnā ma te tauhaga 2020:

- E fakaaoga e Tokelau te tupe Niu Hila, ko tona uiga e fuafua te lahi ma te mafai e Tokelau fakatau koloa i Samoa ki te mamafa o te tupe Niu Hila fakatuha ki te tupe Samoa¹.
- Mai te tauhaga 2013 hove ko koloa uma e fakatau i Tokelau na kaumai mai Samoa. Ko te lahiga o ienei koloa ko ni koloa na toe fakatau atu ki atunuku i fafo, ma na fotu mai i ni tahi atunuku e

¹ The Tokelau Department of Finance tends to fix its exchange rate for the calendar year (currently WST/NZD=1.70), taking out some of the volatility.

aofia ai ia Haina, Auhetalia ma Niu Hila. Ko tēnei vaega e tupu mai ai te fekehekehenakiga o tau o koloa i kuata takitahi, ma e mafai foki ke mafua mai i na manakoga o te atunuku, kae vēnā foki fakavaomalo, te maua o koloa, vēnā foki te fuafuaga o tupe hui. E lahi he afainaga ki te FTKK a Tokelau kafai kua iei ni huiga ki nā tau, vēnā ma te maua pe he maua o koloa i Samoa.

- E fuafua lava e te nuku nā tau o ana koloa e fakatau (fakatakitakiga ko te hikaleti, te ava malohi ma na vaiinu), ma e ono tahuihui.
- I te Fono Fakamua ia Iulai 2017 na talia ai ke fai he lafoga (tax) e 325 pahene mo nā hikaleti i te manatu lava ke tipitipi ki lalo te tagohia o te hikaleti, ma vēnā ai foki ona fehoahoani ki te fakaitiitiga o nā famai he pēhi. Talu mai ai nei, e fai lava ma hikihihi nā tau o nā hikaleti e nā Taupulega takitahi. Ona ai ko te tulaga o te mamafa o te hikaleti i te FTKK, ko hō he huiga i to lātou tau e afaina lahi ma lahi ai te huiga ki te aofaki o te FTKK e ve ona iloa mai te 2017. I te tau tukutonuga lava o te hē paleni lahi ona ai ko nā polihi o tau o te hikaleti, fakatahi ai ma te heahea maua pe hapalai te hikaleti i nā koloa, e fua fakalua te FTKK. E fua muamua ke aofia na hikaleti, ma toe fua ai kae he aofia ai nā hikaleti. E fakafaigofie ai ma holotonu ai ki te “Tobacco free Tokelau 2020”, ma vēnā ai ona he toe kaumai ai te hikaleti e nā koloa ki Tokelau.

Lavelaveaga

Na fai tēnei lomiga ma te maeaea lelei i te fatuga, te iloiloga ma te tuhiga o nā fakamatalaga. E he mautinoa e te TNSO e matuai heai he pahala i tēnei lōmiga, e fakamalie atu ai e hē ono lavelavea tēnei mataeke kafai kua pahala atu he mea i tēnei lōmiga.

Taimi

Ko na lōmiga iēnei e fakahalalau i te initaneti e he tahi mataeke, ma e hē i lalo o te kikilaga a te TNSO. E hē pakū la ki te TNSO kafai kua tuai te fakahalalau atuga o iēnei lōmiga.

[ends]