



Office of the Council for the
Ongoing Government of Tokelau
Tokelau National Statistics Office

Kuata o luni, 2021 Fuafakatatau o nā Tau o Koloa ma Kaukaunaga a Tokelau (FTKK)

Vāega tāua

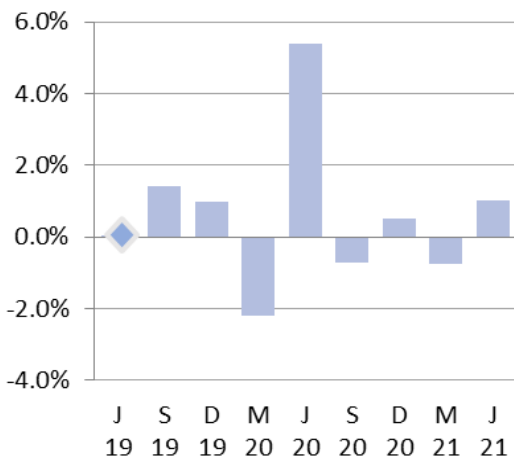
Ite kuata o luni 2021 fakatuhatuha ki te kuata o Māti 2021:

- Na hikitia ai te FTKK i he 1.0 pahene, fakatuhatuha ki te 0.7 pahene na pakū ai i te kuata taluai.
- Ko te hikitia pito mauhaga e 3.8 pahene na māfua mai te tau o nā koloa ite kulupu o meakai ma vaiinu, e 1.2 pahene tona hao ki te FTKK o te kuata tēnei.
- Ko kulupu e hohoko ite lahi o te hao ki te hikitia o tau o koloa ko te kulupu o femalagaakiga e 2.8 pahene, ma e 0.1 pahene tona hao ki te FTKK o tēnei kuata.
- Ko te kulupu o fale, huavai, eletihe, kēhi ma ietahi huāū na pito mauhaga atu te pakū o nā tau, e 3.4 pahene na pakū ai, ma e 0.2 pahene tokehe ki te aofakiga o te FTKK o te kuata tēnei.

Mai te kuata o luni 2020 ki te kuata o luni 2021, na hikitia te FTKK i he 0.1 pahene. E fakatuhagia tēnei hikitagā ki te 4.4 pahene na hikitia ai te FTKK mai te kuata o Māti 2020 ki te kuata o Māti 2021.

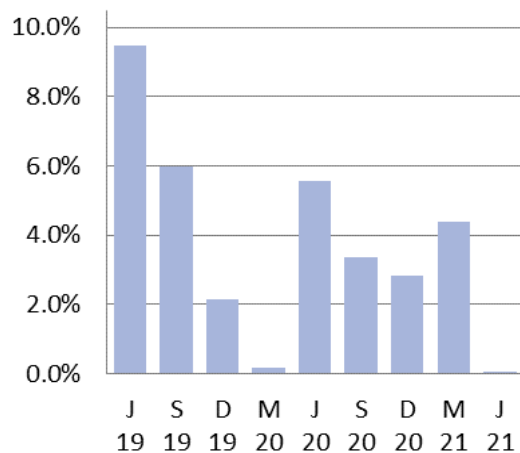
Ko te FTKK e fuafua ai te fua o te tau o nā koloa ma nā kaukaunaga e fakatau e nā kaukaiga tautokatahi i Tokelau. E fakamaumau e te Ofiha o Fuainumela Fakamaumau a Tokelau (TNSO) nā tau o nā koloa mai nā falekoloa vēnā ma nā paaka (bulk store) mai nā motu e tolu. Fakatahi ai ma nā tau o nā koloa ma nā kaukaunaga e aofia ai nā vaega o te femalagaakiga (transport), te mālohiaga (energy), vēnā nā vāega tau fehokotakiga (telecommunications).

Fuafakatatau o na tau o Koloa ma Kaukaunaga o Tokelau
Huiga taki kuata



Fakamatalaga mai: Ofiha o Fuainumela Fakamaumau o Tokelau

Fuafakatatau o na tau o Koloa ma Kaukaunaga o Tokelau
Huiga taki tauhaga



Fakamatalaga mai: Ofiha o Fuainumela Fakamaumau o Tokelau

Taimalie Kele Lui
National Statistician

30 Iuni 2021

Fakamatalaga

Ko nā vāega i lalo e tuku atu ai ni fakamatalaga pe ko ni auiliiliga āgai ki te Fuafakatatau o Tau o Koloa ma Kaukaunaga i Tokelau:

- [Ko te FTKK o te kuata o Luni 2021 na hiki i he 1.0 pahene](#)
- [Hikitia te koloa meakai ma vaiinu i he 3.8 pahene ite kuata tenei](#)
- [Hēai he huiga ki te kulupu o te ava mālohi ma te hikaleti](#)
- [Kotokotoga o nā hao o nā tahi kulupu pe ko nā vāega ki te FTKK o te kuata](#)
- [Afiaga mai nā koloa na hikitia na tau ma na koloa pakū na tau](#)
- [0.1 pahene e hikitia ai te FTKK mō te tauhaga ki a Luni 2021.](#)

Ko te FTKK o te kuata o Luni 2020 na hiki i he 1.0 pahene

Ko te kuata o Luni 2021 na hikitia ai te FTKK i he 1.0 pahene; fakatuhatuha ki he 0.7 pahene pakū ite kuata o Mati 2021.

E tuha e tolu ia kulupu mai nā kulupu e iva na matau e fakailoga tokehe to latou hao ki te FTKK o te kuata tēnei. E tolu ia kulupu e fakamaugia e hikitia, e lua e heki iei he hūiga, ka ko na tahi kulupu e he ki iei he afainaga ki te FTKK faka-katoa o te kuata tenei.

Kulupu	Pahene hao ki te FTKK taki kuata
01. Meakai ma vaiinu	1.2%
02. Ava mālohi ma te hikaleti	0.0%
03. Kie lavalava ma hēvae	0.0%
04. Fale, huavai, eletihe, kēhi ma ietahi huāū	-0.2%
05. Meāfale, kope faigāluenga mō te fakaleleiga o kāiga	-0.1%
07. Femalagaakiga	0.1%
08. Fehokotakiga	0.0%
09. Fakafiafiaga ma aganuku	-0.1%
12. Koloa kehekehe ma kaukaunaga	0.1%
Katoaga o te FTKK	1.0%

Matau: E ono hē maua te aofakiga tonu o te FTKK i nā pahene ienei ona ai ko te fakakatoatoaga o nā pahene ki he numela katoatoa (rounding).

Hikitia te kulupu ona koloa meakai ma vaiinu i he 3.8 pahene ite kuata tenei

Ko nā tau i te kulupu o meakai ma vaiinu na hikitia i he 3.8 pahene ite kuata tēnei, ma e 1.2 pahene tona hao ki te aofaki o te FTKK mo te kuata.

Ko nā koloa takitahi pe ko nā vāega kulupu mai tenei kulupu na lahi to latou hao ki tenei hikitagā na maua mai i nā tau pakū mō nā:

- Moa (hiki i he 18 pahene)
- Mamoe (chops) (hiki i he 9.1 pahene)
- Apa ika (hiki i he 51 pahene).

Ko nā koloa takitahi na fai hao ki te pakū o te FTKK na maua mai i nā tau o nā koloa iēnei:

- Meakai inuti (cereal) (pakū i he 22 pahene)
- Apa hohi tomato (pakū i he 37 pahene)
- Falaoa mata (pakū i he 7.0 pahene).

Ko te hikitagā o nā tau o koloa mai te kulupu o vaiinu (hiki i he 5.6 pahene) na lahi mafua mai i nā vaiinu fualakau (fruit juices) (hikitia i he 30 pahene), vēnā ma nā fagu vai auli (hiki 13 pahene).

Hēai he huiga ki te kulupu o te Ava mālohi ma te hikaleti

E heki iei he huiga mo te kulupu o ava mālohi ma te hikaleti, ma e heki iei hona afainaga ki te FTKK ote kuata tēnei.

E fakatuha ki he 1.3 pahene hikitia ki nā tau o koloa, ma he 0.5 pahene na hao ai ki te FTKK ote kuata o Māti 2021.

Kotokotoga o nā hao o nā tahi kulupu pe ko nā vāega ki te FTKK o te kuata

Ko nā koloa i nā kulupu o femalagaakiga ma koloa ma kaukaunaga kehekehe na kitea ai te hikitagā o nā tau i he 2.1 pahene ma te 2.8 pahene, e taki 0.1 pahene nā hao o nā kulupu ienei ki te FTKK o te kuata.

E tolu ietahi kulupu na atagia nā hūiga ki nā tau o koloa. Ko te kulupu o fale, huavai, eletihe, kēhi ma ietahi huāū na pakū i he 3.4 pahene, ma e 0.2 pahene fakailoga tokehe tona hao ki te FTKK o te kuata. Ko nā kulupu o meāfale ma nā kope faigāluega mō te fakaleleiga o kāiga (pakū i he 1.5 pahene), vēnā ma te kulupu o fakafiafiaga ma aganuku (pakū i he 3.4 pahene), e taki 0.1 pahene nā hao o nā kulupu iēnei ki te FTKK o te kuata.

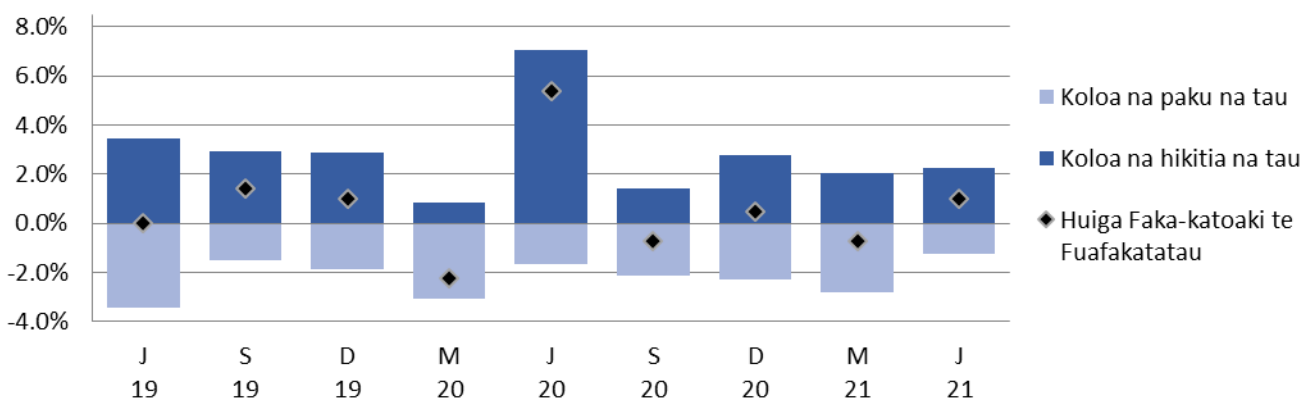
Ko nā kulupu e totoe e hē lahi ni hūiga i tēnei kuata. Ko tau o koloa i te kulupu o kie lavalava ma hēvae (pakū i he 0.6 pahene) ma e hē lahi he āfainaga ki te FTKK o te kuata. E heki iei he hūiga ki tau i te kulupu o fehokotakiga i tēnei kuata.

Afiaga mai nā koloa na hikitia nā tau ma nā koloa na pakū nā tau

E fakamanino mai i te kalafa i lalo nā afiaga e pogai mai i nā koloa na hikitia ma nā koloa na pakū nā tau. Ko te āfainaga faka-katoa ko he 0.1 pahene hikitia ki te FTKK mō te kuata o Luni 2021.

Pahene ona hao ko te Fuafakatatau o na tau o Koloa ma Kaukaunaga ihe Vaitaimi

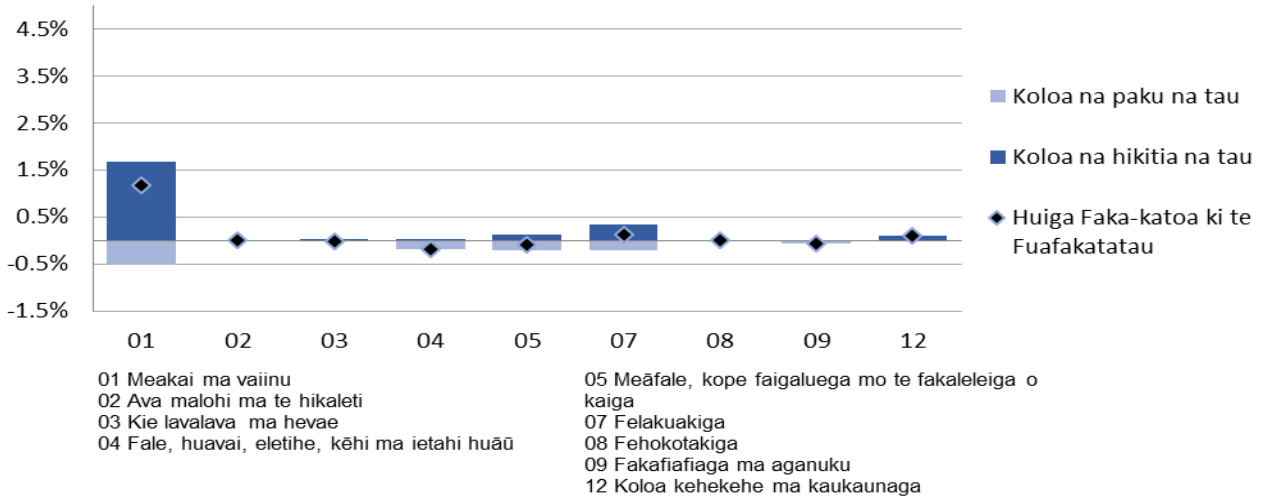
Huiga Taki kuata ki te kuata o Luni 2021



Fakamatalaga mai: Ofiha o Fuainumela Fakamaumau o Tokelau

Ko te kalafa i lalo e fakahino mai ai nā āfiaga mai nā kulupu na hikitia nā tau o koloa, ma nā kulupu na pakū nā tau i tēnei kuata.

Pahene ona hao kite Fuafakatatau o na tau o Koloa ma Kaukaunaga ina Kulupu
ite kuata o Luni 2021



Fakamatalaga mai: Ofiha o Fuainumela Fakamaumau o Tokelau

0.1 pahene e hikitia ai te FTKK mō te tauhaga ki a Luni 2021.

E 0.1 pahene na hikitia ai te FTKK mō te tauhaga ki te kuata o Luni 2021. E fakatuhagia tēnei mahiki ki te 4.4 pahene na hikitia ai te tau o koloa faka-te-tauhaga ki te kuata o Māti 2021.

Ko te huiga pito mauluga ki nā tau o nā koloa na hau mai te kulupu o femalagaakiga (pakū I he 6.5%), e 0.4 pahene fakailoga tokehe ki te FTKK o te tauhaga. E pogai lahi mai ona ko te pakū o tau o te huaū i luga o fenua.

Ko tau o koloa i te kulupu o meakai ma vaiinu na hikitia i he 1.1 pahene, ma na hao ai i he 0.3 pahene ki te FTKK o te tauhaga.

Ko nā koloa takitahi iēnei i nā koloa tau meakai na lahi to lātou pahene hao i te hikitaga o tau:

- Mamoe (chops) (hiki i he 20 pahene)
- Moa (hiki i he 8.2 pahene)
- Huka (hiki i he 22 pahene)

Ko koloa takitahi na lahi ai te pakū o te FTKK ona ko tau o koloa mai te kulupu mea tau meakai ko nā:

- Alaiha (pakū i he 19 pahene)
- Apa ika (pakū i i he 17 pahene)
- Pepa huhu (pakū i he 6.9 pahene).

Ko nā tau o koloa ma kaukaunaga i nā kulupu o fakafiafiaga ma aganuku ma te fale, huavai, eletihe, kēhi ma ietahi huāū na pakū i te 2.8 pahene, ma te 2.5 pahene, ma na hao tutuha ai i he 0.1 pahene fakailoga tokehe ki te pahene o tau faka-te-tauhaga (annual inflation rate).

E fā nā tahi kulupu na kitea te heki lahi ni hūiga ki nā tau o koloa i tēnei tauhaga agai ki te kuata o Luni 2021. Mō te kulupu o ava mālohi ma te hikaleti na hikitia nā tau i he 0.6 pahene, ma hao i he 0.2 pahene ki te FTKK o te tauhaga. Ko te kulupu o koloa kehekehe ma kaukaunaga (hiki i he 3.1 pahene); kulupu o meāfale, kope faigālua mā te fakaleleiga o kāiga (hiki i he 1.0 pahene), ko nā kulupu ienei tutuha nā hao ki te FTKK o tēnei tauhaga, e taki 0.1 pahene. Ko te tau o nā koloa ite kulupu o kie lavalava ma hēvae na pakū I he 1.5 pahene, ma e heki lahi he afainaga ki te FTKK o te tauhaga. E heki iei he huiga ki te kulupu o fehokotakiga.

Uiga o Kupu

Fakamatalaga āgai ki te Fuafakatatau o Tau o Koloa ma Kaukaunaga (FTKK)

Ko te FTKK ko he fuafakatatau o te huiga o nā tau o he kete e patino ai nā koloa ma nā kaukaunaga e fakatau e nā kaiga tautokatahi i Tokelau. Ko te fakavehegaga ma te tāua o nā itūkaiga koloa ma kaukaunaga i kete tēnei mō te FTKK e tuku mai ai he ata faka-katoa o nā fakafanoga tupe fakafano a kāiga takitahi i Tokelau.

Ko te hini kautu o te FTKK ke fua ma fakamaumau nā huiga o tau o ni koloa filifilia i ni fale koloa/fale faigaluega i loto o he vaitaimi. Kāfai kua maitau kua iei ni hūiga āgai ki te lahi pe ko te mamafa, vērā ma te manaia pe ko te lelei o he koloa i te kete, e ono fai ai la ni gaoioiga ke mautinoa ai e hē āfaina lahi te hūiga o te tau o te koloa.

Na kamata nā lomiga o te FTKK a Tokelau ia Hētema 2012, ma na toe fatu te fakavae (rebase) i a Māti 2017. Ko te piliota fakahino kamata ko te kuata o Māti 2017 (=100.0).

Ko te lihi o koloa ma kaukaunaga i loto o te kete koloa mō te FTKK ma nā fakamatalaga āgai ki te metotia e fakaaogā ki te fuafuaga o te FTKK e maua uma i te neti “Technical notes: Consumer Price Index” www.tokelau.org.nz/Stats.html.

Ni iētahi uiga o kupu

Tau fakahino (price index): E fuafua ai te huiga o nā tau mō koloa ma kaukaunaga i te vā o ni piliota. E fakaauiiili ki ei nā tau o koloa ma kaukaunaga maua mai i ni fale koloa kehekehe.

Piliota fakahino (index reference): Ko te piliota e fakamatea ai te fakatuhathaga o nā tau i na piliota kehekehe. Fakatakikiga, kāfai ko te numela fakahino mō he piliota e 115.0, ko tona uiga ko nā tau na hikitia i he 15.0 pahene mai te piliota fakahino.

Hao hiki/hao pakū (upward/downward contributions): Ko koloa e takutaku hō i tēnei fakamaumauga, ko koloa ia na lahi ho lātou hao ki te aofaki o te FTKK.

Ko te hao o he koloa e aofia ai tona mamafa i te fakahino (index) (ko tona tāua e fua mai i te lahi o tona hao ki te vaega tupe fakafano a te kāiga ki koloa ma kaukaunaga) ma te lahi o nā huiga ki te tau.

Kāfai e iei ni koloa e lua e tutuha to la pahene na hikitia ai i te tau, ko te koloa e mamafa tona FTKK e lahi atu ia tona hao ki te aofaki o te FTKK. Ko tēnei hao e takua ko te pahene hao (index point).

Pāhehe vakalele: Talu mai te fāmai o te Koviti-19, ko te faitotoka mo na faigamalaga fakavaomalo mo Tokelau na tapunia (Mati 2020). Na galulue fakatahi ai te TNSO ma te kaufaigaluega lagolago a te StatsNZ ke falite he metotia ke fakatulaga he pāhehe vakalele e fakavae ki na tau ona pahehe vakalele inā tauhaga kua teka. Ite faiga tenei, ko te fehuihuiakiga ki te tau e fakavae ki na tau ona pahehe ina kuata kua teka e mataugia ai na vaitau o femalagaakiga.

(Ke mātau e hē aofia ai nā malaga vakalele e toe fakafoki mai ai ia tagata mai fafo ma/pe mo na tauale mo ni togafitiga fakavavevave).

Piliota fakailoga (Reference period)

Ko tau o koloa mō te kuata o Māti na fakamaopopo mai te vā o te Aho 15 Fepuali ma te Aho 03 Māti 2021 e nā kaufaigaluega a nā kau tautua a nā nuku takitahi, fakatahi ai ma te kaufaigaluega a te TNSO i Apia.

Tau afiaga (Price influencers)

Eiei foki ni tahi mafuaga e ono mafua ai te hūiga ki nā tau o koloa. Ko ni tahi mafuaga iēnei na āfaina ai te FTKK mō te kuata o Māti, vēnā ma te tauhaga 2021:

- E fakaaogā e Tokelau te tupe Niuhila, ko tona uiga e fuafua te lahi ma te mafai e Tokelau fakatau koloa i Samoa ki te mamafa o te tupe Niuhila fakatuha ki te tupe Samoa¹.
- Mai te tauhaga 2013 hove ko koloa uma e fakatau i Tokelau na kaumai mai Samoa. Ko te lahiga o iēnei koloa ko ni koloa na toe fakatau atu ki atunuku i fafo, ma na fotu mai i ni tahi atunuku e aofia ai ia Haina, Auhetalia ma Niuhila. Ko tēnei vāega e tupu mai ai te fekehekehenakiga o tau o koloa i kuata takitahi, ma e mafai foki ke māfua mai i nā manakoga o te atunuku, kae vēnā foki fakavāomalo, te maua o koloa, vēnā foki te fuafuaga o tupe hui. E lahi he āfainaga ki te FTKK a Tokelau kāfai kua iei ni hūiga ki nā tau, vēnā ma te maua pe he maua o koloa i Samoa.
- E fuafua lava e te nuku nā tau o ana koloa e fakatau (fakatakitakiga ko te hikaleti, te ava malohi ma na vaiinu), ma e ono tahuihui.
- I te Fono Fakamua ia Iulai 2017 na talia ai ke fai he lāfoga (tax) e 325 pahene mō nā hikaleti i te manatu lava ke tipitipi ki lalo te tagohia o te hikaleti, ma vēnā ai foki ona fehoahoani ki te fakaitiitiga o nā fāmai he pēhi. Talu mai ai nei, e fai lava ma hikihiki nā tau o nā hikaleti e nā Taupulega takitahi. Ona ai ko te tūlaga o te mamafa o te hikaleti i te FTKK, ko hō he huiga i to lātou tau e āfaina lahi ma lahi ai te huiga ki te aofaki o te FTKK e ve ona iloa mai te 2017. I te tau tukutonuga lava o te hē paleni lahi ona ai ko nā pōlihi o tau o te hikaleti, fakatahi ai ma te heahea maua pe hapalai te hikaleti i nā koloa, e fua fakalua te FTKK. E fua muamua ke aofia nā hikaleti, ma toe fua ai kae he aofia ai nā hikaleti. E fakafaigofie ai ma holotonu ai ki te “Tobacco free Tokelau 2020”, ma vēnā ai ona hē toe kaumai ai te hikaleti e nā koloa ki Tokelau.

Lavelaveaga

Na fai tēnei lōmiga ma te maeaea lelei i te fatuga, te iloiloga ma te tuhiga o nā fakamatalaga. E he mautinoa e te TNSO e matuai heai he pahala i tēnei lōmiga. E fakamalie atu ai e hē ono lavelavea tēnei mataeke kāfai kua pahala atu i tēnei lōmiga.

Taimi

Ko nā lōmiga iēnei e fakahalalau i te initaneti e he tahi mataeke, ma e hē i lalo o te kikilaga a te TNSO. E hē pakū la ki te TNSO kāfai kua tuai te fakahalalau atuga o iēnei lōmiga.

[ends]

¹ The Tokelau Department of Finance tends to fix its exchange rate for the calendar year (currently WST/NZD=1.70), taking out some of the volatility.

Website: www.tokelau.org.nz/Stats.html

Email: tso@tokelau.org.nz