



Office of the Council for the
Ongoing Government of Tokelau
Tokelau National Statistics Office

Kuata o Tehema, 2021 Fuafakatatau o nā Tau o Koloa ma Kaukaunaga a Tokelau (FTKK)

Vāega tāua

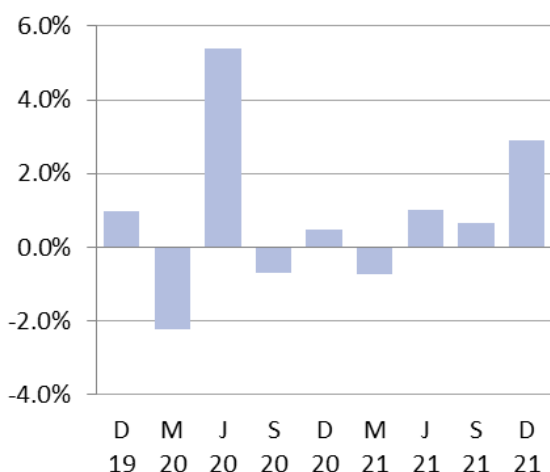
Ite kuata o Tehema 2021 fakatuhatuha kite kuata o Hetema 2021:

- Na hikitia ai te FTKK i he 2.9 pahene, fakatuhatuha kite 0.7 pahene na hikitia ai ite kuata taluai.
- Ko te vaega na pito maualuga tona hao ki te mahiki ote FTKK e tuha e 1.5 pahene ko te kulupu o felakuakiga, na hikitia ai nā tau i he 22 pahene ite kuata nei.
- Ko te vaega e hohoko ite lahi tona hao ki te mahiki tēnei ko te kulupu o meakai ma vaiinu, na hikitia i he 3.2 pahene, ma e 1.0 pahene tona hao kite FTKK o tēnei kuata.
- Ko te kulupu o ava mālohi ma te hikaleti na pito maualuga tona hao ki te āgai ki lalo e tuha e 0.1 fakailoga tokekehe ki te FTKK, e 0.2 pahene na pakū ai nā tau.

Mai te kuata o Tehema 2020 kite kuata o Tehema 2021, na hikitia ai te FTKK i he 3.9 pahene. E fakatuhagia kite 1.4 pahene na hikitia ai te FTKK mai te kuata o Hetema 2020 kite kuata o Hetema 2021.

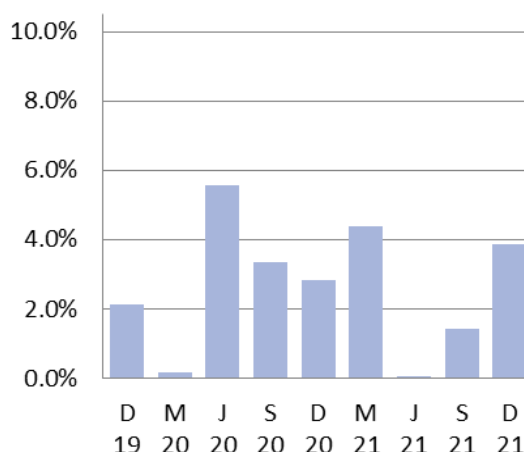
Ko te FTKK e fua ai te tulaga ote fehuiakiga ote tau o nā koloa ma nā kaukaunaga e fakatau e nā kaiga tautokatahi i Tokelau. E fakamaopopo e te Ofiha o Fuainumela Fakamaumau a Tokelau (TNSO) nā tau o nā koloa mai nā falekoloa vēnā ma nā paaka (bulk store) i luga o nā motu e tolu, fakatahi ai ma nā tau o nā koloa ma nā kaukaunaga mai nā mataeke e aofia ai te felakuakiga (transport), mālohiaga (energy), ma nā fehokotakiga (telecommunications).

**Fuafakatatau o nā tau o Koloa
ma Kaukaunaga o Tokelau**
Hūiga taki kuata



Fakamatalaga mai: Ofiha o Fuainumela
Fakamaumau o Tokelau

**Fuafakatatau o nā tau o Koloa
ma Kaukaunaga o Tokelau**
Hūiga taki tauhaga



Fakamatalaga mai: Ofiha o Fuainumela
Fakamaumau o Tokelau

Taimalie Kele Lui
National Statistician

31 Ianuali 2022

Website: <http://tokelau.org.nz/Stats.html>

Email: tns@tokelau.org.nz

Fakamatalaga

Ko nā vāega i lalo e tuku atu ai ni fakamatalaga pe ko ni auiliiliga āgai kite Fuafakatatau o Tau o Koloa ma Kaukaunaga i Tokelau:

- [Hikitia te FTKK ote kuata o Tehema 2021 i he 2.9 pahene](#)
- [Hikitia te kulupu o meakai ma vaiinu i he 3.2 pahene ite kuata tēnei](#)
- [Pakū i he 0.2 pahene te kulupu o te ava mālohi ma te hikaleti](#)
- [Kotokotoga o nā fehikitakiga o ietahi kulupu ite FTKK ote kuata nei](#)
- [Āfiaga mai nā koloa na hikitia nā tau ma nā koloa na pakū nā tau](#)
- [E 3.9 pahene e hikitia ai te FTKK mō te tauhaga ki te kuata o Tehema 2021](#)

Hikitia te FTKK ote kuata o Tehema 2021 i he 2.9 pahene

Ko te FTKK ote kuata o Tehema 2021 na hikitia i he 2.9 pahene; fakatuhatuha te tulaga tēnei ki he 0.7 pahene hikitia ai te kuata o Hetema 2021.

E fokotahi te kulupu mai nā kulupu e iva na fakamaugia ai he fakailoga tōkehe (negative) kite FTKK ote kuata tēnei. E fa ia kulupu e fakamaugia e hikitia, e fokotahi e heki iei he hūiga, ka ko nā kulupu e totee e hē ki iei he āfainaga kite FTKK faka-katoa ote kuata tēnei.

Kulupu	Pahene hao kite FTKK taki kuata
01. Meakai ma vaiinu	1.0%
02. Ava mālohi ma te hikaleti	-0.1%
03. Kie lavalava ma hēvae	0.0%
04. Fale, huavai, eletihe, kēhi ma ietahi huāū	0.0%
05. Meāfale, kope faigāluenga mō te fakaleleiga o kāiga	0.2%
07. Femalagaakiga	1.5%
08. Fehokotakiga	0.0%
09. Fakafiafiaga ma aganuku	0.0%
12. Koloa kehekehe ma kaukaunaga	0.2%
Katoaga ote FTKK	2.9%

Mātau: E ono hē maua te aofakiga tonu ote FTKK i nā pahene iēnei ona ai kote fakakatoatoaga o nā pahene ki he numela katoatoa (rounding).

Hikitia te kulupu o meakai ma vaiinu i he 3.2 pahene ite kuata tēnei

Ko nā tau ite kulupu o meakai ma vaiinu na hikitia i he 3.2 pahene ite kuata tēnei, ma e 1.0 pahene tona hao kite aofaki ote FTKK mō te kuata.

Ko nā koloa takitahi na lahi to lātou hao ki tē hikitia ite vaega kulupu o nā meakai na maua mai ite maualuluga o nā tau mō nā:

- Alaiha (hiki i he 18 pahene)
- Falaoa mata (hiki i he 23 pahene)
- Apa ika (hiki i he 36 pahene).

Ko nā koloa takitahi na lahi to latou hao kite pakū ite vaega kulupu o nā meakai na maua mai ite āgai ki lalo i nā tau o nā koloa iēnei:

- **Mayonnaise** (pakū i he 23 pahene)
- Apa pihupo (pakū i he 5.3 pahene)
- Apa tuna (pakū i he 9.0 pahene).

Ko te hikitia tau o nā koloa ite vaegā kulupu o vaiinu i he 0.9 pahene na māfua lahi ona ko te hikitia o tau o na pepa pauta fai vaiinu i he 86 pahene.

Pakū i he 0.2 pahene te kulupu o te ava malohi ma te hikaleti

Ko te kulupu o te ava malohi ma te hikaleti e 0.1 pahene fakailoga tōkehe tona hao ki te FTKK ote kuata, ona ko te 0.2 pahene na pakū ai nā tau o nā koloa. Ko te pakū tēnei na lahi māfua ona ko te pakū o tau o te pia i he 8.3 pahene.

Ko te pakū tēnei ki te kulupu o te ava malohi ma te hikaleti e fakatuha kite 0.3 pahene hūiga ite kuata o Hetema 2021.

Kotokotoga o nā fehikitakiga o ietahi kulupu ite FTKK ote kuata nei

Ko te kulupu o felakuakiga na pito maualuga tona hao e 1.5 pahene, e 22 pahene na hikitia ai nā tau ite kuata tēnei. E māfua ona ko te maualuga o tau o nā pāhehe vakalele (mō nei e fakatino ni femalagakiga) ite vaitaimi nei ote tauhaga, venā foki ia tau o te huāū.

E lua ietahi kulupu na atagia nā hūiga ki nā tau o koloa. Ko te kulupu o meāfale ma nā kope faigāluaega mō te fakaleleiga o nā fale o kaiga na hikitia i he 4.2 pahene, ma e 0.2 pahene tona hao kite FTKK ote kuata. Ko te kulupu o koloa kehekehe ma kaukaunaga (pakū i he 5.9 pahene).

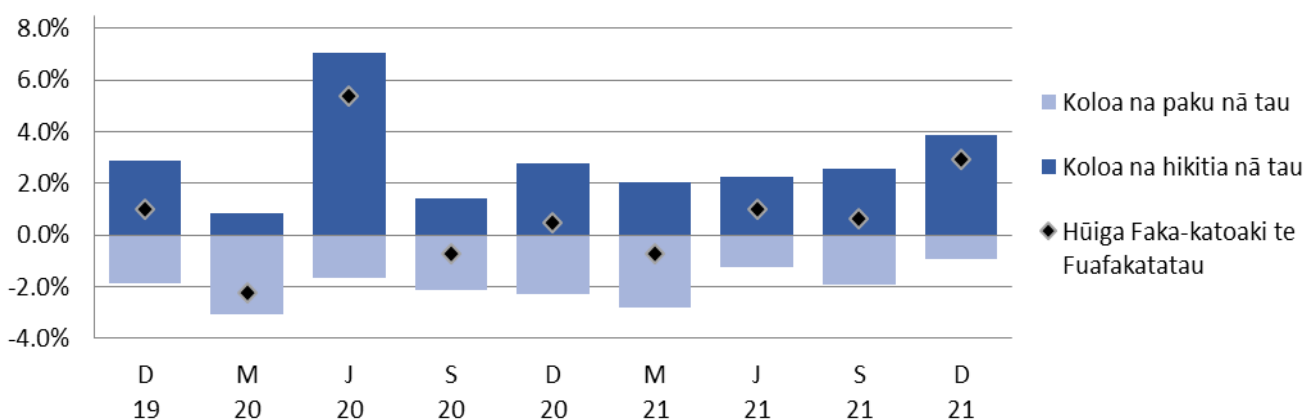
Ko nā kulupu e totoe e taigole ni hūiga ite kuata tēnei. Ko te kulupu o kie lavalava ma hēvae (pakū i he 0.1 pahene), ma te kulupu o fale, huavai, eletihe, kēhi ma ietahi huāū (pakū i he 0.4 pahene), ko te kulupu o fakafiafiaga ma aganuku (pakū i he 7.0 pahene). E hē lahi ni o latou āfainaga kite FTKK ote kuata. Ko te kulupu o fehokotakiga e hēai ni hūiga ite kuata tēnei.

Āfiaga mai nā koloa na hikitia nā tau ma nā koloa na pakū nā tau

Ko te kalafa i lalo e fakamaina ai nā āfiaga e pogai mai i nā koloa na hikitia ma nā koloa na pakū nā tau. Ko te āfainaga faka-katoa ko he 2.9 pahene hikitia kite FTKK mō te kuata o Tehema 2021.

Pahene o nā hao ko te Fuafakatatau o nā Koloa ma Kaukaunaga ihe Vaitaimi

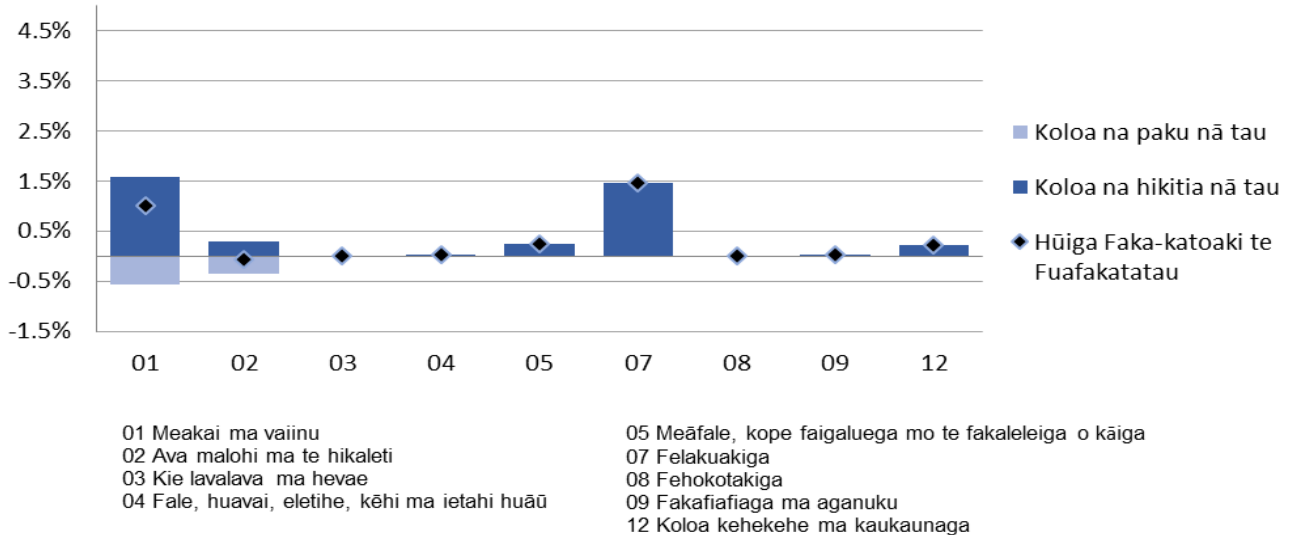
Hūiga taki kuata ki te kuata o Tehema 2021



Fakamatalaga mai: Ofiha o Fuainumela Fakamaumau o Tokelau

Ko te kalafa i lalo e fakahino mai ai nā āfiaga mai nā koloa na hikitia nā tau i nā kulupu takitahi ite kuata tēnei.

Pahene o nā hao kite Fuafakatatau o nā tau o Koloa ma Kaukaunaga ina Kulupu ite kuata o Tehema 2021



Fakamatalaga mai: Ofiha o Fuainumela Fakamaumau o Tokelau

E 3.9 pahene e hikitia ai te FTKK mō te tauhaga ki te kuata o Tehema 2021.

E 3.3 pahene na hikitia ai te FTKK mō te tauhaga kite kuata o Tehema 2021. E fakatuhagia tēnei mahiki kite 1.4 pahene na hikitia ai te tau o koloa faka-te-tauhaga kite kuata o Hetema 2021.

Ko te kulupu na lahi tona hao kite āgai ki luga o te FTKK ko te kulupu o nā meakai ma vaiinu e 2.3 pahene, e 7.6 pahene na hikia ai nā tau.

Ko nā koloa takitahi iēnei i nā koloa tau meakai na lahi to lātou pahene hao ite hikitagā o tau:

- Moa (hiki i he 38 pahene)
- Alaiha (hiki i he 25 pahene)
- Falaoa mata (hiki i he 31 pahene)

Ko koloa takitahi na lahi ai te pakū ona ko tau o koloa mai te kulupu o meakai ko nā:

- Mamoe (chops) (pakū i he 20 pahene)
- Apa ika (pakū i i he 24 pahene)
- Apa pihupo (pakū i he 6.9 pahene).

E fa ietahi kulupu na kitea te hikitia nā tau o koloa. Ko te kulupu o felakuakiga na ikitia i he 15 pahene nā tau, ko te kulupu o meāfale, kope faigaluega mō te fakaleleiga o kāiga na hiki i he 6.7 pahene. Na hikitia foki nā tau ite kulupu o ava mālohi ma te hikaleti i he 0.8 pahene. Ko te kulupu o koloa kehekehe ma kaukaunaga na pakū i he 3.9 pahene. Mō nā kulupu uma iēnei e fa na hao ai kite FTKK faka-te-tauhaga i nā pahene iēnei e 1.1 pahene, 0.4 pahene, 0.3 pahene, ma te 0.1 pahene.

E tolu ia kulupu na kitea na pakū nā tau i tēnei tauhaga kite kuata o Tehema 2021. Mō te kulupu o fakafiafiaga ma aganuku (pakū i he 8.2 pahene) na hao i he pahene tokehe e 0.2 kite FTKK faka-te-tauhaga. Ko te kulupu o fale, huavai, eletihe, kēhi ma ietahi huāū na paku nā tau o koloa i he 1.7 pahene, ma na hao ai i he 0.1 pahene tōkehe kite FTKK faka-te-tauhaga. Na vēna foki ona pakū nā tau ite kulupu o nā kie lavalava ma hēvae i he 0.2 pahene, e hēai ni āfainaga ki te FTKK ote tauhaga tēnei. E hēai he hūiga kite kulupu o fehokotakiga.

Uiga o Kupu

Fakamatalaga āgai kite Fuafakatatau o Tau o Koloa ma Kaukaunaga (FTKK)

Ko te FTKK ko he fuafakatatau ote huiga o nā tau o he kete e patino ai nā koloa ma nā kaukaunaga e fakatau e nā kaiga tautokatahi i Tokelau. Ko te fakavehegaga ma te tāua o nā itūkaiga koloa ma kaukaunaga i kete tēnei mō te FTKK e tuku mai ai he ata faka-katoa o nā fakafanoga tupe fakafano a kāiga takitahi i Tokelau.

Ko te hini kautu ote FTKK ke fua ma fakamaumau nā huiga o tau o ni koloa filifilia i ni fale koloa/fale faigaluega i loto o he vaitaimi. Kāfai kua maitau kua iei ni hūiga āgai kite lahi pe kote mamafa, vērā ma te manaia pe kote lelei o he koloa ite kete, e ono fai ai la ni gaoioiga ke mautinoa ai e hē āfaina lahi te hūiga ote tau ote koloa.

Na kamata nā lomiga ote FTKK a Tokelau ia Hetema 2012, ma na toe fatu te fakavae (rebase) i a Māti 2017. Kote piliota fakahino kamata kote kuata o Māti 2017 (=100.0).

Ko te lihi o koloa ma kaukaunaga i loto ote kete koloa mō te FTKK ma nā fakamatalaga āgai kite metotia e fakaaogā kite fuafuaga ote FTKK e mau uma ite neti “Technical notes: Consumer Price Index” www.tokelau.org.nz/Stats.html.

Ni iētahi uiga o kupu

Tau fakahino (price index): E fuafua ai te huiga o nā tau mō koloa ma kaukaunaga ite vā o ni piliota. E fakaauiiili ki ei nā tau o koloa ma kaukaunaga maua mai i ni fale koloa kehekehe.

Piliota fakahino (index reference): Ko te piliota e fakamatea ai te fakatuhathaga o nā tau i na piliota kehekehe. Fakatakikakiga, kāfai kote numela fakahino mō he piliota e 115.0, ko tona uiga ko nā tau na hikitia i he 15.0 pahene mai te piliota fakahino.

Hao hiki/hao pakū (upward/downward contributions): Ko koloa e takutaku hō i tēnei fakamaumauga, ko koloa ia na lahi ho lātou hao kite aofaki ote FTKK.

Ko te hao o he koloa e aofia ai tona mamafa ite fakahino (index) (ko tona tāua e fua mai ite lahi o tona hao kite vaega tupe fakafano a te kāiga ki koloa ma kaukaunaga) ma te lahi o nā huiga kite tau.

Kāfai e iei ni koloa e lua e tutuha to la pahene na hikitia ai ite tau, ko te koloa e mamafa tona FTKK e lahi atu ia tona hao kite aofaki ote FTKK. Ko tēnei hao e takua ko te pahene hao (index point).

Pāhehe vakalele: Talu mai te fāmai ote Koviti-19, ko te faitotoka mō na faigamalaga fakavaomalo mō Tokelau na tapunia (Mati 2020). Na galulue fakatahi ai te TNSO ma te kaufaigaluega lagolago a te StatsNZ ke falite he metotia ke fakatulaga he pāhehe vakalele e fakavae ki nā tau o nā pahehe vakalele inā tauhaga kua teka. Ite faiga tēnei, kote fehuihuiakiga kite tau e fakavae ki nā tau o nā pahehe ina kuata kua teka e mataugia ai na vaitau o femalagaakiga.

(Ke mātau e hē aofia ai nā malaga vakalele e toe fakafoki mai ai ia tagata mai fafo ma/pe mō nā tauale mō ni togafitiga fakavavevave).

Piliota fakailoga (Reference period)

Ko tau o koloa mō te kuata o Tehema na fakamaopopo mai te vā ote Aho 15 Novema ma te Aho 25 Tehema 2021 e nā kaufaigaluega a nā kau tautua a nā nuku takitahi, fakatahi ai ma te kaufaigaluega a te TNSO i Apia.

Tau afiaga (Price influencers)

E iei foki ni tahi māfua ga e ono māfua ai te hūiga ki nā tau o koloa. Ko ni tahi māfua ga iēnei na āfaina ai te FTKK mō te kuata o Tehema, vērā ma te tauhaga 2021:

- E fakaaogā e Tokelau te tupe Niuhila, ko tona uiga e fuafua te lahi ma te mafai e Tokelau fakatau koloa i Samoa kite mamafa ote tupe Niuhila fakatuha kite tupe Samoa¹.
- Mai te tauhaga 2013 hove ko koloa uma e fakatau i Tokelau na kaumai mai Samoa. Kote lahiga o iēnei koloa ko ni koloa na toe fakatau atu ki atunuku i fafo, ma na fotu mai i ni tahi atunuku e aofia ai ia Haina, Auhetalia ma Niuhila. Ko tēnei vāega e tupu mai ai te fekehekehenakiga o tau o koloa i kuata takitahi, ma e mafai foki ke māfua mai i nā manakoga ote atunuku, kae vērā foki fakavāomalo, te maua o koloa, vērā foki te fuafuaga o tupe hui. E lahi he āfainaga kite FTKK a Tokelau kāfai kua iei ni hūiga ki nā tau, vērā ma te maua pe he maua o koloa i Samoa.
- E fuafua lava e te nuku nā tau o ana koloa e fakatau (fakatakitakiga kote hikaleti, te ava malohi ma na vaiinu), ma e ono tahuihui.
- Ite Fono Fakamua ia Iulai 2017 na talia ai ke fai he lāfoga (tax) e 325 pahene mō nā hikaleti ite manatu lava ke tipitipi ki lalo te tagohia ote hikaleti, ma vērā ai foki ona fehoahoani kite fakaitiitiga o nā fāmai he pēhi. Talu mai ai nei, e fai lava ma hikihiki nā tau o nā hikaleti e nā Taupulega takitahi. Ona ai kote tūlaga ote mamafa ote hikaleti ite FTKK, ko hō he huiga i to lātou tau e āfaina lahi ma lahi ai te huiga kite aofaki ote FTKK e ve ona iloa mai te 2017. Ite tau tukutonuga lava ote hē paleni lahi ona ai ko nā pōlihi o tau ote hikaleti, fakatahi ai ma te heahea maua pe hapalai te hikaleti i nā koloa, e fua fakalua te FTKK. E fua muamua ke aofia nā hikaleti, ma toe fua ai kae he aofia ai nā hikaleti. E fakafaigofie ai ma holotonu ai kite “Tobacco free Tokelau 2020”, ma vērā ai ona hē toe kaumai ai te hikaleti e nā koloa ki Tokelau.

Lavelaveaga

Na fai tēnei lōmiga ma te maeaea lelei ite fatuga, te iloiloga ma te tuhiga o nā fakamatalaga. E he mautinoa e te TNSO e matuai hēai he pahala i tēnei lōmiga. E fakamalie atu ai e hē ono lavelavea tēnei mataeke kāfai kua pahala atu i tēnei lōmiga.

Taimi

Ko nā lōmiga iēnei e fakahalalau ite initaneti e he tahi mataeke, ma e hē i lalo ote kikilaga a te TNSO. E hē pakū la kite TNSO kāfai kua tuai te fakahalalau atuga o iēnei lōmiga.

[fakaikuga]

¹ The Tokelau Department of Finance tends to fix its exchange rate for the calendar year (currently WST/NZD=1.75), taking out some of the volatility.