



Office of the Council for the
Ongoing Government of Tokelau
Tokelau National Statistics Office

Kuata o Māti, 2022 Fuafakatatau o nā Tau o Koloa ma Kaukaunaga a Tokelau

Vāega tāua

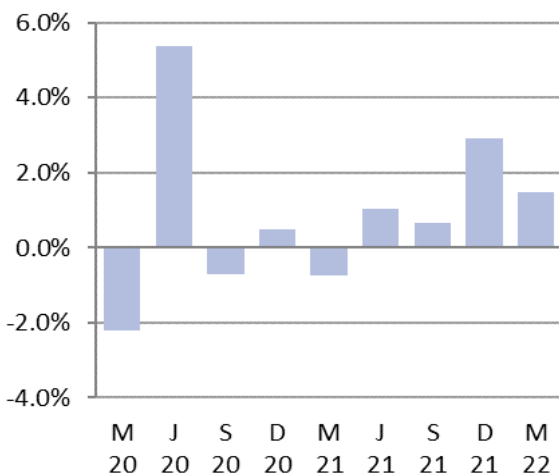
Ite kuata o Māti 2022 fakatuhatuha kite kuata o Tehema 2021:

- Na hikitia ai te fuafakatatau o nā tau o koloa ma kaukaunaga (FTKK) i he 1.5 pahene, fakatuhatuha kite 2.9 pahene na hikitia ai ite kuata taluai.
- Ko te vāega na pito maualuga tona hao ki te mahiki ote FTCK e tuha e 2.7 pahene ko te kulupu ote ava mālohi ma te hikaleti, na hikitia ai nā tau i he 7.6 pahene ite kuata nei.
- Ko te vāega e hohoko ite lahi tona hao ki te mahiki tēnei ko te kulupu o meakai ma vaiinu, na hikitia i he 2.5 pahene, ma e 0.8 pahene tona hao kite FTCK o tēnei kuata.
- Ko te kulupu o femalagaakiga na pito maualuga tona hao ki te āgai ki lalo ote FTCK ote kuata nei e tuha e 1.7 fakailoga tokehe,, e 22 pahene na pakū ai nā tau.

Mai te kuata o Māti 2021 kite kuata o Māti 2022, na hikitia ai te FTCK i he 6.2 pahene. E fakatuha kite 3.9 pahene na hikitia ai te FTCK mai te kuata o Tehema 2020 kite kuata o Tehema 2021.

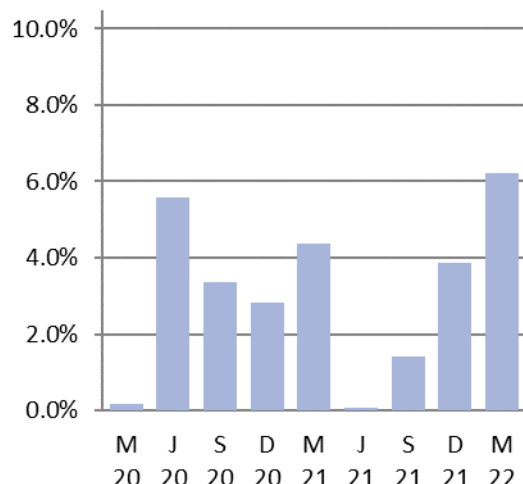
Ko te FTCK e fua ai te tulaga ote fehuiakiga ote tau o nā koloa ma nā kaukaunaga e fakatau e nā kaiga tautokatahi i Tokelau. E fakamaopopo e te Ofiha o Fuainumela Fakamaumau a Tokelau (TNSO) nā tau o nā koloa mai nā falekoloa vēnā ma nā falekoloa paaka (bulk store) i luga o nā fenua e tolu, fakatahi ai ma nā tau o nā koloa ma nā kaukaunaga mai nā mataeke e aofia ai te felakuakiga (transport), mālohiaga (energy), ma fehokotakiga (telecommunications).

Fuafakatatau o nā tau o Koloa ma Kaukaunaga o Tokelau
Hūiga taki kuata



Fakamatalaga mai: Ofiha o Fuainumela Fakamaumau o Tokelau

Fuafakatatau o nā tau o Koloa ma Kaukaunaga o Tokelau
Hūiga taki tauhaga



Fakamatalaga mai: Ofiha o Fuainumela Fakamaumau o Tokelau

Fakamatalaga

Ko nā vāega i lalo e tuku atu ai ni fakamatalaga auiliili āgai kite Fuafakatatau o nā Tau o Koloa ma Kaukaunaga i Tokelau:

- [Hikitia i he 1.5 pahene te FTKK ote kuata o Māti 2021](#)
- [Hikitia i he te 2.5 pahene te kulupu o meakai ma vaiinu ite kuata tēnei](#)
- [Hikitia i he 7.6 pahene te kulupu o te ava mālohi ma te hikaleti](#)
- [Kotokotoga o nā fehikitakiga o ietahi kulupu ite FTKK ite kuata nei](#)
- [Āfiaga mai nā koloa na hikitia nā tau ma nā koloa na pakū nā tau](#)
- [E 6.2 pahene e hikitia ai te FTKK mō te tauhaga ki te kuata o Māti 2022](#)

Hikitia i he 1.5 pahene te FTKK ote kuata o Māti 2021

E 1.5 pahene na hikitia ai te FTKK ote kuata o Māti 2022; fakatuhatuha ki he 2.9 pahene na Hikitia ai te kuata o Tehema 2021.

E lua ia kulupu mai nā kulupu e iva na fakamaugia ai he fakailoga tōkehe (negative) kite FTKK ote kuata tēnei. E fokotahi te kulupu e fakamaugia e heki iei he hūiga, kae ko ietahi kulupu e totoe e hē ki iei he āfainaga kite FTKK faka-katoa ote kuata tēnei.

Kulupu	Pahene hao kite FTKK taki kuata
01. Meakai ma vaiinu	0.8%
02. Ava mālohi ma te hikaleti	2.7%
03. Kie lavalava ma hēvae	0.0%
04. Fale, huavai, eletihe, kēhi ma ietahi huāū	0.0%
05. Meāfale, kope faigāluenga mō te fakaleleiga o kāiga	-0.3%
07. Femalagaakiga	-1.7%
08. Fehokotakiga	0.0%
09. Fakafiafiaga ma aganuku	0.0%
12. Koloa kehekehe ma kaukaunaga	0.0%
Katoaga ote FTKK	1.5%

Mātau: E ono hē maua te aofakiga tonu ote FTKK i nā pahene iēnei ona ai kote fakakatoatoaga o nā pahene ki he numela katoatoa (rounding).

Hikitia i he 2.5 pahene te kulupu o meakai ma vaiinu ite kuata tēnei

E 2.5 pahene na Hikitia ai nā tau o nā koloa ite kulupu o meakai ma vaiinu ite kuata tēnei, ma e 0.8 pahene tona hao kite FTKK mō te kuata.

Ko nā koloa takitahi na lahi to lātou hao ki tē hikitia ite kulupu o nā meakai na pogai ite maualuluga o nā tau o nā koloa iēnei:

- Apa pihupo (hikitia i he 13 pahene)
- Mayonnaise (hikitia i he 47 pahene)
- Pateta (hikitia i he 62 pahene).

Ko nā koloa takitahi na lahi to latou hao kite pakū ite kulupu o nā meakai na pogai ite maualalalo i nā tau o nā koloa iēnei:

- Mamoe (chops) (pakū i he 11 pahene)
- Apa ika (pakū i he 34 pahene)
- Falaoa mata (pakū i he 7.4 pahene).

Ko te hikitia ki nā tau o nā koloa ite kulupu o vaiinu (hikitia i he 26 pahene) na māfua lahi ona ko na tau o nā mea fai vaiinu hukalaki (hikitia i he 70 pahene), ma nā kofe fai ti (hikitia i he 27 pahene).

Hikitia i he 7.6 pahene te kulupu o te ava malohi ma te hikaleti

Ko nā tau o nā koloa ite kulupu o nā ava malohi ma te hikaleti na hikitia i he 7.6 pahene, ma e 2.7 pahene to hao kite FTKK ote kuata nei. Ko te hikitia tēnei na feeke lahi i he 9.2 pahene na hikitia ai te tau ote hikaleti.

Ko te mahiki ki te kulupu ona ava malohi ma te hikaleti e fakatuha kite 0.2 pahene na pakū ai nā tau, ma te 0.1 pahene fakailoga tokehe ote kuata o Tehema 2021.

Kotokotoga o nā fehikitakiga o ietahi kulupu ite FTKK ite kuata nei

Ko te paku pito maualuga e 1.7 pahene mai te kulupu o felakuakiga, e 22 pahene na paku ai te tau o nā koloa ite kuata tēnei. E māfua ona ko te maualuga o tau o nā pāhehe vakalele (mō nei e fakatino ni femalagakiga) ite vaitaimi nei ote tauhaga.

E 4.8 pahene na paku ai te tau o koloa ite kulupu o meāfale ma nā kope faigāluenga mō te fakaleleiga o nā fale o kaiga, ma e 0.3 pahene fakailoga tokehe tona hao kite FTKK ote kuata.

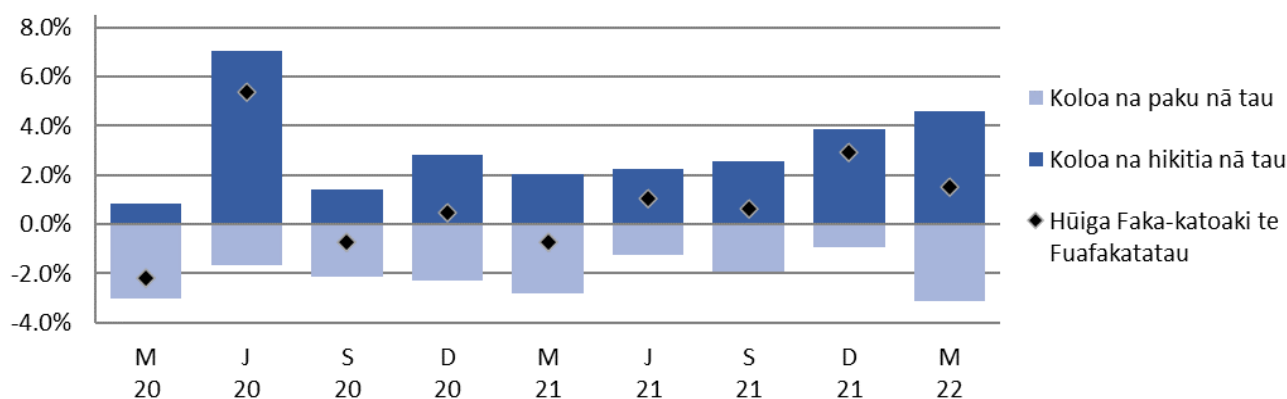
Ko nā kulupu e totoe e taigole lele ni hūiga na mataugia ki ei ite kuata tēnei, ko te kulupu o koloa kehekehe ma kaukaunaga (pakū i he 1.3 pahene), ko te kulupu o fakafiafiaga ma aganuku (hikitia i he 2.5 pahene), kulupu o kie lavalava ma hēvae (pakū i he 0.5 pahene), ma te kulupu o fale, huavai, eletihe, kēhi ma ietahi huāū (hikitia i he 0.2 pahene). Ko nā kulupu uma iēnei e hē lahi ni o latou āfainaga kite FTKK ote kuata. Ko te kulupu o fehokotakiga e hēai ni hūiga ite kuata tēnei.

Āfiaga mai nā koloa na hikitia nā tau ma nā koloa na pakū nā tau

Ko te kalafa i lalo e fakaali mai ai nā āfiaga o nā koloa na hikitia ma nā koloa na pakū nā tau. Ko te āfainaga faka-katoa e 1.5 pahene na hikitia ai te FTKK ote kuata o Māti 2022.

Pahene o nā hao ko te Fuafakatatau o nā Koloa ma Kaukaunaga ihe Vaitaimi

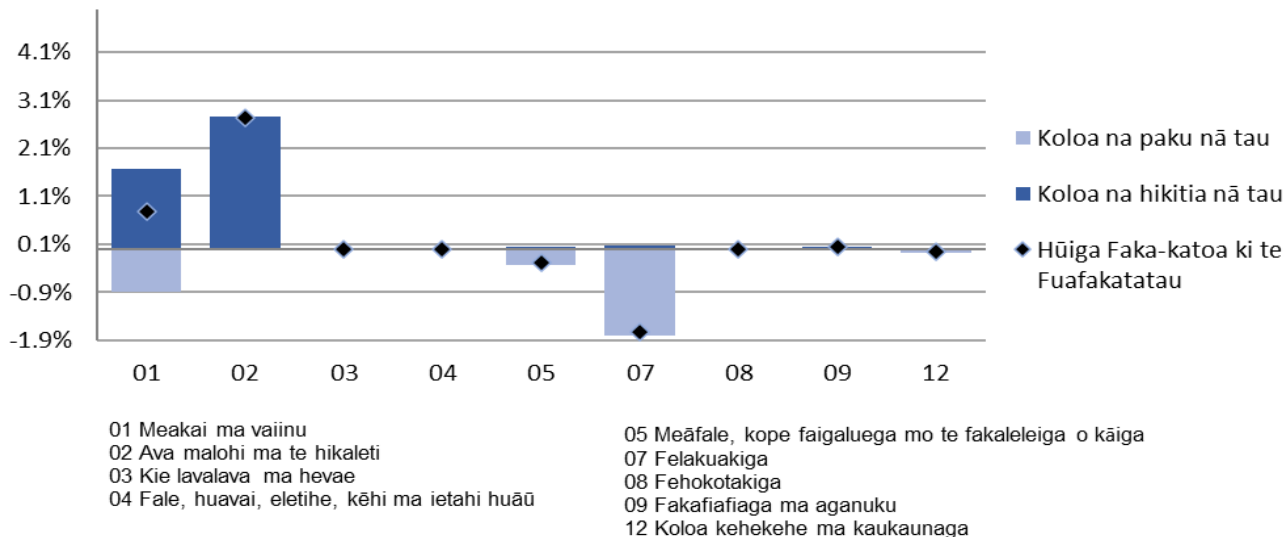
Hūiga taki kuata ki te kuata o Mati 2022



Fakamatalaga mai: Ofiha o Fuainumela Fakamaumau o Tokelau

Ko te kalafa i lalo e fakahino mai ai nā āfiaga mai nā koloa na hikitia nā tau i nā kulupu takitahi ite kuata tēnei.

Pahene o nā hao kite Fuafakatatau o nā tau o Koloa ma Kaukaunaga ina Kuluku ite kuata o Mati 2022



Fakamatalaga mai: Ofiha o Fuainumela Fakamaumau o Tokelau

E 6.2 pahene e hikitia ai te FTKK mō te tauhaga ki te kuata o Māti 2022.

E 6.2 pahene na hikitia ai te FTKK mō te tauhaga kite kuata o Māti 2022. E fakatuha kite 3.9 pahene na hikitia ai te tau o koloa faka-te-tauhaga kite kuata o Tehema 2021.

Ko te kulupu na lahi tona hao kite āgai ki luga o te FTKK ko te kulupu o nā meakai ma vaiinu e 3.3 pahene, ona ai ko te hikitia o tau i he 10.8 pahene.

Ko nā koloa takitahi iēnei i nā koloa tau meakai na lahi to lātou pahene hao ite hikitagā o tau:

- Moa (hikitia i he 24 pahene)
- Alaiha (hikitia i he 30 pahene)
- Huka (hikitia i he 20 pahene)

Ko koloa takitahi na lahi ai te pakū o nā ko tau o koloa mai te kulupu o meakai ko nā:

- Mamoe (chops) (pakū i he 26 pahene)
- Apa tuna (pakū i i he 16 pahene)
- Apa tomato hohi (pakū i he 33 pahene).

Ko te kulupu o ava mālohi ma te hikaleti te vāega tona lua na kitea ai te lahi tona hao e 2.7 pahene, ko nā tau o nā koloa na Hikitia ite 7.1 pahene mō te FTKK ote kuata tēnei.

E fa ietahi kulupu na iei o latou hao ki te FKTT ote tauhaga; mō te kulupu o felakuakiga e 0.4 pahene tona hao (hikitia nā tau i he 7.1 pahene). Ko te kulupu o koloa kehekehe ma kaukaunaga e 0.1 pahene tona hao (hikitia na tau i he 3.2 pahene). Ko te kulupu o fale, huavai, eletihe, kēhi ma ietahi huāū na paku nā tau o koloa i he 3.3 pahene, ma e 0.2 pahene fakailoga tōkehe to na hao. Ma te kulupu o fakafiafiaga ma aganuku na 3.2 pahene na pakū ai, ma 0.1 pahene fakailoga tokehe tona hao kite FTKK faka-te-tauhaga.

Ko nā kulupu e totoe e taigole lele ni hūiga na mataugia ki ei ite FTKK o tēnei tauhaga kia Māti 2022. Ko te kulupu o nā kie lavalava ma hēvae na hikitia nā tau i he 0.4 pahene. Ko te kulupu o nā meāfale, kope faigālua mā te fakaleleiga o kāiga na paku nā tau i he 0.5 pahene. Ko nā hao o nā kulupu iēnei e heki iei he āfainaga ki te FTKK ote tauhaga tēnei. E hēai he hūiga kite kulupu o fehokotakiga.

Uiga o Kupu

Fakamatalaga āgai kite Fuafakatatau o Tau o Koloa ma Kaukaunaga (FTKK)

Ko te FTKK ko he fuafakatatau ote huiga o nā tau o he kete e patino ai nā koloa ma nā kaukaunaga e fakatau e nā kaiga tautokatahi i Tokelau. Ko te fakavehegaga ma te tāua o nā itūkaiga koloa ma kaukaunaga i kete tēnei mō te FTKK e tuku mai ai he ata faka-katoa o nā fakafanoga tupe fakafano a kāiga takitahi i Tokelau.

Ko te hini kautu ote FTKK ke fua ma fakamaumau nā huiga o tau o ni koloa filifilia i ni fale koloa/fale faigaluega i loto o he vaitaimi. Kāfai kua maitau kua iei ni hūiga āgai kite lahi pe kote mamafa, vērā ma te manaia pe kote lelei o he koloa ite kete, e ono fai ai la ni gaoioiga ke mautinoa ai e hē āfaina lahi te hūiga ote tau ote koloa.

Na kamata nā lomiga ote FTKK a Tokelau ia Tehema 2012, ma na toe fatu te fakavae (rebase) i a Māti 2017. Kote piliota fakahino kamata kote kuata o Māti 2017 (=100.0).

Ko te lihi o koloa ma kaukaunaga i loto ote kete koloa mō te FTKK ma nā fakamatalaga āgai kite metotia e fakaaogā kite fuafuaga ote FTKK e maua uma ite neti “Technical notes: Consumer Price Index” www.tokelau.org.nz/Stats.html.

Ni iētahi uiga o kupu

Tau fakahino (price index): E fuafua ai te huiga o nā tau mō koloa ma kaukaunaga ite vā o ni piliota. E fakaauiiili ki ei nā tau o koloa ma kaukaunaga maua mai i ni fale koloa kehekehe.

Piliota fakahino (index reference): Ko te piliota e fakamatea ai te fakatuhathaga o nā tau i na piliota kehekehe. Fakatakikiga, kāfai kote numela fakahino mō he piliota e 115.0, ko tona uiga ko nā tau na hikitia i he 15.0 pahene mai te piliota fakahino.

Hao hiki/hao pakū (upward/downward contributions): Ko koloa e takutaku hō i tēnei fakamaumauga, ko koloa ia na lahi ho lātou hao kite aofaki ote FTKK.

Ko te hao o he koloa e aofia ai tona mamafa ite fakahino (index) (ko tona tāua e fua mai ite lahi o tona hao kite vāega tupe fakafano a te kāiga ki koloa ma kaukaunaga) ma te lahi o nā huiga kite tau.

Kāfai e iei ni koloa e lua e tutuha to la pahene na hikitia ai ite tau, ko te koloa e mamafa tona FTKK e lahi atu ia tona hao kite aofaki ote FTKK. Ko tēnei hao e takua ko te pahene hao (index point).

Pāhehe vakalele: Talu mai te fāmai ote Koviti-19, ko te faitotoka mō na faigamalaga fakavaomalo mō Tokelau na tapunia (Mati 2020). Na galulue fakatahi ai te TNSO ma te kaufaigaluega lagolago a te StatsNZ ke falite he metotia ke fakatulaga he pāhehe vakalele e fakavae ki nā tau o nā pahehe vakalele inā tauhaga kua teka. Ite faiga tēnei, kote fehuihuiakiga kite tau e fakavae ki nā tau o nā pahehe ina kuata kua teka e mataugia ai na vaitau o femalagaakiga.

(Ke mātau e hē aofia ai nā malaga vakalele e toe fakafoki mai ai ia tagata mai fafo ma/pe mō nā tauale mō ni togafitiga fakavavevave).

Piliota fakailoga (Reference period)

Ko tau o koloa mō te kuata o Māti na fakamaopopo mai te vā ote Aho 15 Fepuali ma te Aho 8 o Apelila 2022 e nā kaufaigaluega a nā kau tautua a nā nuku takitahi, fakatahi ai ma te kaufaigaluega a te TNSO i Apia.

Tau afiaga (Price influencers)

E iei foki ni tahi māfua ga e ono māfua ai te hūiga ki nā tau o koloa. Ko ni tahi māfua ga iēnei na āfaina ai te FTKK mō te kuata o Māti, vērā ma te tauhaga 2022:

- E fakaaogā e Tokelau te tupe Niuhila, ko tona uiga e fuafua te lahi ma te mafai e Tokelau fakatau koloa i Samoa kite mamafa ote tupe Niuhila fakatua kite tupe Samoa¹.
- Mai te tauhaga 2013 hove ko koloa uma e fakatau i Tokelau na kaumai mai Samoa. Kote lahiga o iēnei koloa ko ni koloa na toe fakatau atu ki atunuku i fafo, ma na fotu mai i ni tahi atunuku e aofia ai ia Haina, Auhetalia ma Niuhila. Ko tēnei vāega e tupu mai ai te fekehekehenakiga o tau o koloa i kuata takitahi, ma e mafai foki ke māfua mai i nā manakoga ote atunuku, kae vērā foki fakavāomalo, te maua o koloa, vērā foki te fuafuaga o tupe hui. E lahi he āfainaga kite FTKK a Tokelau kāfai kua iei ni hūiga ki nā tau, vērā ma te maua pe he maua o koloa i Samoa.
- E fuafua lava e te nuku nā tau o ana koloa e fakatau (fakatakitakiga kote hikaleti, te ava malohi ma na vaiinu), ma e ono tahuihui.
- Ite Fono Fakamua ia Iulai 2017 na talia ai ke fai he lāfoga (tax) e 325 pahene mō nā hikaleti ite manatu lava ke tipitipi ki lalo te tagohia ote hikaleti, ma vērā ai foki ona fehoahoani kite fakaitiitiga o nā fāmai he pēhi. Talu mai ai nei, e fai lava ma hikihiki nā tau o nā hikaleti e nā Taupulega takitahi. Ona ai kote tūlaga ote mamafa ote hikaleti ite FTKK, ko hō he huiga i to lātou tau e āfaina lahi ma lahi ai te huiga kite aofaki ote FTKK e ve ona iloa mai te 2017. Ite tau tukutonuga lava ote hē paleni lahi ona ai ko nā pōlihi o tau ote hikaleti, fakatahi ai ma te heahea maua pe hapalai te hikaleti i nā koloa, e fua fakalua te FTKK. E fua muamua ke aofia nā hikaleti, ma toe fua ai kae he aofia ai nā hikaleti. E fakafaigofie ai ma holotonu ai kite “Tobacco free Tokelau 2020”, ma vērā ai ona hē toe kaumai ai te hikaleti e nā koloa ki Tokelau.

Lavelaveaga

Na fai tēnei lōmiga ma te maeaea lelei ite fatuga, te iloiloga ma te tuhiga o nā fakamatalaga. E he mautinoa e te TNSO e matuai hēai he pahala i tēnei lōmiga. E fakamalie atu ai e hē ono lavelavea tēnei mataeke kāfai kua pahala atu i tēnei lōmiga.

Taimi

Ko nā lōmiga iēnei e fakahalalau ite initaneti e he tahi mataeke, ma e hē i lalo ote kikilaga a te TNSO. E hē pakū la kite TNSO kāfai kua tuai te fakahalalau atuga o iēnei lōmiga.

[fakaikuga]

¹ The Tokelau Department of Finance tends to fix its exchange rate for the calendar year (currently WST/NZD=1.75), taking out some of the volatility.