



Office of the Council for the  
Ongoing Government of Tokelau  
Tokelau National Statistics Office

# Kuata o luni, 2022 Fuafakatatau o nā Huiga ki na Tau o Koloa ma Kaukaunaga a Tokelau

## Fakamatalaga tāua

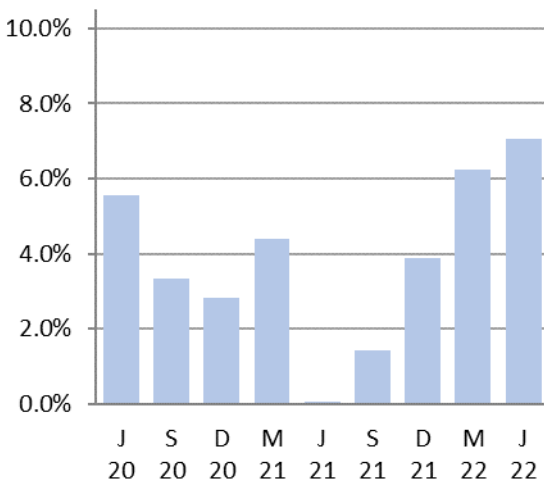
I te kuata o luni 2022 fakatuhatuha ki te kuata o Māti 2022:

- Na hikitia ai te fuafakatatau o nā huiga ki na tau o koloa ma kaukaunaga (FTKK) i he 1.8 pahene, fakatuhatuha ki te 1.5 pahene na hikitia ai i te kuata taluai.
- Ko te kulupu na pito maualuga tona hao ki te mahiki o te FTCK e tuha e 1.4 pahene ko te kulupu o nā meakai ma vai-inu, na hikitia ai nā tau i he 4.4 pahene i te kuata tēnei.
- Ko te vāega e hohoko i te lahi tona hao ki te mahiki tēnei ko te kulupu o felakuakiga, na hikitia i he 6.7 pahene, ma e 0.4 pahene tona hao kite FTCK o te kuata tenei.
- Ko te kulupu o meāfale, kope faigāluenga mō te fakaleleiga o kāiga na pito maualuga tona hao ki te āgai ki lalo o te FTCK o te kuata tēnei e tuha e 0.2 pahene fakailoga tōkehe, ona ko te 3.3 pahene na pakū ai nā tau.

Mai te kuata o luni 2021 ki te kuata o luni 2022, na hikitia ai te FTCK i he 7.1 pahene. E fakatuha ki te 6.2 pahene na hikitia ai te FTCK mai te kuata o Māti 2021 ki te kuata o Māti 2022.

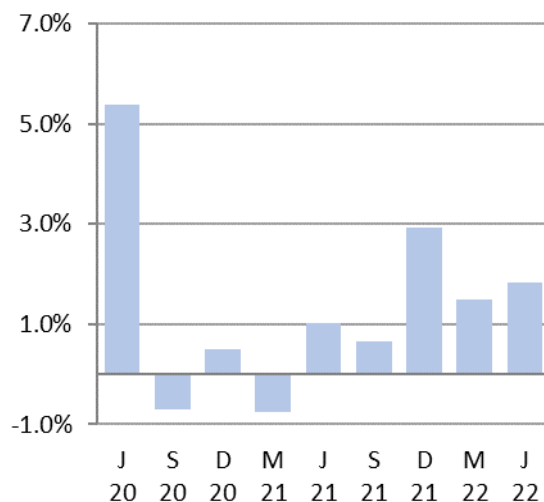
Ko te FTCK e fua ai te hūiga o nā tau o nā koloa ma nā kaukaunaga e fakatau e nā kaiga tautokatahi i Tokelau. E fakamaopopo e te Ofiha o Fuainumela Fakamaumau a Tokelau (TNSO) nā tau o nā koloa mai nā falekoloa vēnā ma nā falekoloa paaka (bulk store) i luga o nā fenua e tolu, fakatahi ai ma nā tau o nā koloa ma nā kaukaunaga mai nā mataeke e aofia ai te felakuakiga (transport), mālohiaga (energy), ma fehokotakiga (telecommunications).

**Fuafakatatau o nā tau o Koloa  
ma Kaukaunaga o Tokelau**  
Hūiga taki tauhaga



Fakamatalaga mai: Ofiha o Fuainumela  
Fakamaumau o Tokelau

**Fuafakatatau o nā tau o Koloa  
ma Kaukaunaga o Tokelau**  
Hūiga taki kuata



Fakamatalaga mai: Ofiha o Fuainumela  
Fakamaumau o Tokelau

Taimalie Kele Lui  
National Statistician

29 Iulai 2022

## Fakamatalaga

Ko nā vāega i lalo e tuku atu ai ni fakamatalaga auiliili āgai ki te fuafakatatau o nā huiga o nā tau o koloa ma kaukaunaga i Tokelau:

- [Hikitia i he 1.8 pahene te FTKK o te kuata o Luni 2022](#)
- [Hikitia i he 4.4 pahene te kulupu o meakai ma vai-inu i te kuata tēnei](#)
- [Hikitia i he 0.5 pahene te kulupu o na ava mālohi ma te hikaleti](#)
- [Kotokotoga o nā fehikitakiga o iētahi kulupu i te FTKK i te kuata nei](#)
- [Āfiaga mai nā koloa na hikitia nā tau ma nā koloa na pakū nā tau](#)
- [E 7.1 pahene e hikitia ai te FTKK mō te tauhaga ki te kuata o Luni 2022](#)

## Hikitia i he 1.8 pahene te FTKK o te kuata o Luni 2022

E 1.8 pahene na hikitia ai te FTKK o te kuata o Luni 2022; fakatuhatuha ki he 1.5 pahene na hikitia ai te kuata o Māti 2022.

E lua ia kulupu mai nā kulupu e iva na fakamaugia ai he fakailoga tōkehe (negative) ki te FTKK o te kuata tēnei, e fā ia kulupu na hikita, e fokotahi te kulupu e hēai he hūiga, kae ko iētahi kulupu e totoe e hēki iei he āfainaga ki te FTKK faka-kātoa o te kuata tēnei.

Kulupu	Pahene hao ki te FTKK taki kuata
01. Meakai ma vai-inu	1.4%
02. Ava mālohi ma te hikaleti	0.2%
03. Kie lavalava ma hēvae	0.0%
04. Fale, huavai, eletihe, kēhi ma iētahi huāū	0.0%
05. Meāfale, kope faigāluenga mō te fakaleleiga o kāiga	-0.2%
07. Felakuakiga	0.4%
08. Fehokotakiga	0.0%
09. Fakafiafiaga ma aganuku	-0.1%
12. Koloa kehekehe ma kaukaunaga	0.1%
Kātoaga o te FTKK	1.8%

**Mātau:** E ono hē maua te aofakiga tonu o te FTKK i nā pahene iēnei ona ai kote fakakātoatoaga o nā pahene ki he numela kātoatoa (rounding).

## Hikitia i he 4.4 pahene te kulupu o meakai ma vai-inu i te kuata tēnei

E 4.4 pahene na hikitia ai nā tau o nā koloa i te kulupu o nā meakai ma vai-inu i te kuata tēnei, ma e 1.4 pahene tona hao ki te FTKK mō te kuata.

Ko nā koloa takitahi na lahi to lātou hao ki tē hikitia i te kulupu o nā meakai na pogai i te maualuluga o nā tau o nā koloa iēnei:

- Mamoe (chops) (hikitia i he 41 pahene)
- Apaika (hikitia i he 97 pahene)
- Alaiha (hikitia i he 11 pahene).

Ko nā koloa takitahi na lahi to lātou hao ki te pakū i te kulupu o nā meakai na pogai i nā koloa iēnei:

- Moa (pakū i he 3.9 pahene)
- Apa hupaketi (pakū i he 35 pahene)
- Meakai inu tī (cereal) (pakū i he 30 pahene).

Ko nā tau o nā koloa i te vāega kulupu o vai-inu na pakū i he 14 pahene, na māfua lahi mai te tau o nā pepa pauta fai vai-inu (pakū i he 43 pahene), ma nā pauta fai vai-inu hukalaki (pakū i he 12 pahene).

### Hikitia i he 0.5 pahene te kulupu o te ava malohi ma te hikaleti

Na hikitia i he 0.5 pahene nā tau o nā koloa i te kulupu o nā ava malohi ma te hikaleti, ma e 0.2 pahene tona hao ki te FTKK o te kuata tēnei. Ko te hikitia tēnei na fēke lahi i te 1.1 pahene na hikitia ai te tau ote hikaleti.

Ko te mahiki ki te kulupu o te ava malohi ma te hikaleti e fakatuha ki te 7.6 pahene na hikitia ai nā tau, ma te 2.7 pahene hao ki te FTKK o te kuata o Māti 2022.

### Kotokotoga o nā fehikitakiga o iētahi kulupu i te FTKK i te kuata nei

Ko te kulupu o meāfale, kope faigāluenga mō te fakaleleiga o kāiga na pito lahi tona hao e tuha ma te 0.2 pahene ki te āgai ki lalo o te FTKK o te kuata, e 3.3 pahene na pakū ai nā tau i te kuata tēnei. Ko te māfuaga ona ko te lahi o nā koloa i te kulupu tēnei na pakū nā tau, fakatakitakiga ko nā holo takele (pakū i he 7.5 pahene), ma ietahi koloa mō te kaiga (pakū i he 45 pahene). Ko nā tau i te kulupu o fakafiafiaga ma aganuku na pakū foki i he 4.5 pahene, ma e 0.1 pahene tona hao ki te FTKK o te kuata.

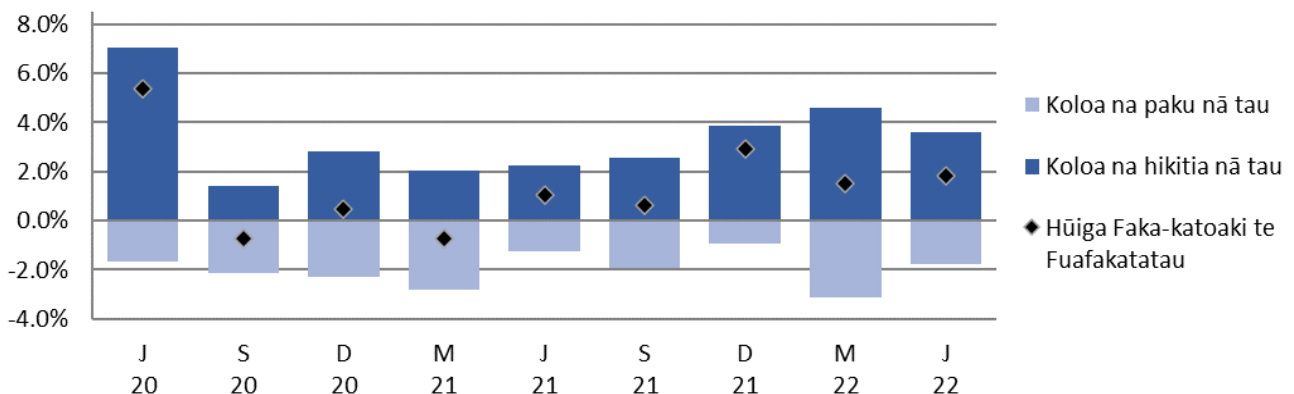
E lua iētahi kulupu na kitea te hikitia nā tau; ko te kulupu o felakuakiga (hikitia i he 6.7 pahene), ma te kulupu o nā koloa kehekehe ma kaukaunaga (hikitia i he 2.0 pahene), ma e taki 0.4 pahene ma te 0.1 pahene na hao o nā kulupu iēnei ki te FTKK o te kuata.

Ko na kulupu e totoe e hē lahi he hūiga i tēnei kuata. E i loto ai te kulupu o fale, huavai, eletihe, kēhi ma iētahi huāū (hikitia i he 0.7 pahene), ma te kulupu o kie lavalava ma hēvae (pakū i he 0.1 pahene). Ko nā hao o kulupu iēnei e hēki lahi he hūiga kite FTKK ote kuata. E hēki iei he hūiga kite kulupu o fehokotakiga i te kuata tēnei.

### Āfiaga mai nā koloa na hikitia nā tau ma nā koloa na pakū nā tau

Ko te kalafa i lalo e fakaali mai ai nā āfiaga o nā koloa na hikitia ma nā koloa na pakū nā tau. Ko te āfainaga faka-kātoa e 1.8 pahene na hikitia ai te FTKK ote kuata o Luni 2022.

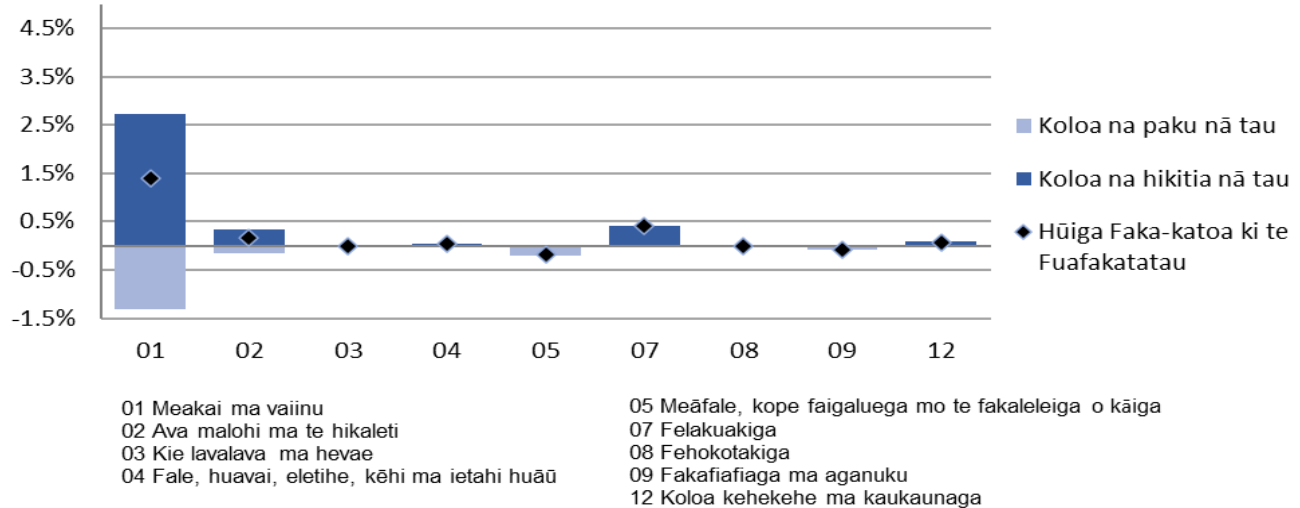
**Pahene o nā hao ko te Fuafakatatau o nā Koloa ma Kaukaunaga ihe Vaitaimi**  
Hūiga taki kuata ki te kuata o Luni 2022



**Fakamatalaga mai:** Ofiha o Fuainumela Fakamaumau o Tokelau

Ko te kalafa i lalo e fakahino mai ai nā āfiaga mai nā koloa na hikitia nā tau i nā kulupu takitahi i te kuata tēnei.

**Pehene o nā hao kite Fuafakatatau o nā tau o Koloa ma Kaukaunaga ina Kulupu ite kuata o Luni 2022**



**Fakamatalaga mai:** Ofiha o Fuainumela Fakamaumau o Tokelau

## E 7.1 pahene e hikitia ai te FTKK mō te tauhaga ki te kuata o Luni 2022.

Ko te FTKK e hikitia i he 7.1 pahene mō te tauhaga ki te kuata o Luni 2022. E fakatuha ki te 6.2 pahene na hikitia ai te tau o koloa faka-te-tauhaga ki te kuata o Māti 2022.

Ko te kulupu na lahi tona hao ki te āgai ki luga o te FTKK ko te kulupu o nā meakai ma vai-inu e 3.6 pahene, ona ai ko te hikitia i he 11 pahene o tau o koloa ki te FTT mō te tauhaga.

Ko nā koloa takitahi iēnei i nā koloa tau meakai na lahi to lātou pahene hao i te hikitagā o tau:

- Alaiha (hikitia i he 34 pahene)
- Apa tuna (hikitia i he 72 pahene)
- Povi (beef) (hikitia i he 41 pahene)

Ko koloa takitahi na lahi ai te pakū o nā ko tau o koloa mai te kulupu o meakai ko nā:

- Mamoe (chops) (pakū i he 3.6 pahene)
- Apa ika (pakū i i he 13 pahene)
- Tuihi pateta (pakū i he 24 pahene).

Ko te kulupu o te ava mālohi ma te hikaleti ko te vāega tona lua ia na kitea ai te lahi tona hao e 2.8 pahene, ko nā tau o nā koloa na hikitia i te 7.6 pahene mō te FTKK faka-te-tauhaga.

E fā iētahi kulupu na iei o lātou hao ki te FKTT o te tauhaga; mō te kulupu o felakuakiga e 0.7 pahene tona hao (hikitia nā tau i he 12 pahene). Ko te kulupu o koloa kehekehe ma kaukaunaga e 0.1 pahene tona hao (hikitia na tau i he 2.4 pahene). Ko te kulupu o fale, huavai, eletihe, kēhi ma iētahi huāū na pāku nā tau o koloa i he 2.4 pahene, ma e 0.1 pahene fakailoga tōkehe to na hao. Ma te kulupu o fakafiafiaga ma aganuku e 7.2 pahene na pakū ai nā tau, e 0.1 pahene fakailoga tōkehe tona hao ki te FTKK faka-te-tauhaga.

E taigole he hūiga na mātaugia ki te FTKK o te tauhaga ki te kuata o Luni 2022 mai nā kulupu e totoe. Mō te kulupu o fale, huavai, eletihe, kēhi ma iētahi huāū, na hikitia nā tau i he 0.8 pahene. Ko te kulupu o nā kie lavalava ma hēvae na pakū nā tau i he 0.9 pahene. Ko nā hao mai nā kulupu e lua iēnei e hēki lahi he hūiga ki te FTKK faka-te-tauhaga. E hēki iei he hūiga ki te kulupu o Fehokotakiga.

## Uiga o Kupu

### Fakamatalaga āgai kite Fuafakatatau o Tau o Koloa ma Kaukaunaga (FTKK)

Ko te FTKK ko he fuafakatatau ote hūiga o nā tau o he kete e patino ai nā koloa ma nā kaukaunaga e fakatau e nā kaiga tautokatahi i Tokelau. Ko te fakavehegaga ma te tāua o nā itūkaiga koloa ma kaukaunaga i kete tēnei mō te FTKK e tuku mai ai he ata faka-katoa o nā fakafanoga tupe fakafano a kāiga takitahi i Tokelau.

Ko te hini kautū ote FTKK ke fua ma fakamaumau nā hūiga o tau o ni koloa filifilia i ni fale koloa/fale faigaluega i loto o he vaitaimi. Kāfai kua maitau kua iei ni hūiga āgai kite lahi pe kote mamafa, vērā ma te manaia pe kote lelei o he koloa i te kete, e ono fai ai la ni gaoioiga ke mautinoa ai e hē āfaina lahi te hūiga ote tau ote koloa.

Na kamata nā lomiga ote FTKK a Tokelau ia Māti 2012, ma na toe fatu te fakavae (rebase) ia Luni 2017. Kote piliota fakahino kamata kote kuata o Luni 2017 (=100.0).

Ko te lihi o koloa ma kaukaunaga i loto ote kete koloa mō te FTKK ma nā fakamatalaga āgai kite metotia e fakaaogā kite fuafuaga ote FTKK e mau uma i te neti “Technical notes: Consumer Price Index” [www.tokelau.org.nz/Stats.html](http://www.tokelau.org.nz/Stats.html).

### Ni iētahi uiga o kupu

**Tau fakahino (price index):** E fuafua ai te hūiga o nā tau mō koloa ma kaukaunaga i te vā o ni piliota. E fakaauiiili ki ei nā tau o koloa ma kaukaunaga maua mai i ni fale koloa kehekehe.

**Piliota fakahino (index reference):** Ko te piliota e fakamatea ai te fakatuhatuhaga o nā tau i na piliota kehekehe. Fakatakikakiga, kāfai kote numela fakahino mō he piliota e 115.0, ko tona uiga ko nā tau na hikitia i he 15.0 pahene mai te piliota fakahino.

**Hao hiki/hao pakū (upward/downward contributions):** Ko koloa e takutaku hō i tēnei fakamaumauga, ko koloa ia na lahi ho lātou hao kite aofaki ote FTKK.

Ko te hao o he koloa e aofia ai tona mamafa i te fakahino (index) (ko tona tāua e fua mai i te lahi o tona hao kite vāega tupe fakafano a te kāiga ki koloa ma kaukaunaga) ma te lahi o nā hūiga kite tau.

Kāfai e iei ni koloa e lua e tutuha to la pahene na hikitia ai i te tau, ko te koloa e mamafa tona FTKK e lahi atu ia tona hao kite aofaki ote FTKK. Ko tēnei hao e takua ko te pahene hao (index point).

**Pāhehe vakalele:** Talu mai te fāmai ote Koviti-19, ko te faitotoka mō na faigamalaga fakavaomalo mō Tokelau na tapunia (Mati 2020). Na galulue fakatahi ai te TNSO ma te kaufaigaluega lagolago a te StatsNZ ke falite he metotia ke fakatūlaga he pāhehe vakalele e fakavae ki nā tau o nā pahehe vakalele inā tauhaga kua teka. I te faiga tēnei, kote fehuihuiakiga kite tau e fakavae ki nā tau o nā pahehe ina kuata kua teka e mataugia ai na vaitau o femalagaakiga.

(Ke mātau e hē aofia ai nā malaga vakalele e toe fakafoki mai ai ia tagata mai fafo ma/pe mō nā tauale mō ni togafitiga fakavavevave).

### Piliota fakailoga (Reference period)

Ko tau o koloa mō te kuata o Luni na fakamaopopo mai te vā ote Aho 16 Mē ma te Aho 7 o Luni 2022 e nā kaufaigaluega a nā kau tautua a nā nuku takitahi, fakatahi ai ma te kaufaigaluega a te TNSO i Apia.

## Tau afiaga (Price influencers)

E iei foki ni tahi māfua ga e ono māfua ai te hūiga ki nā tau o koloa. Ko ni tahi māfua ga iēnei na āfaina ai te FTKK mō te kuata o Luni, vērā ma te tauhaga 2022:

- E fakaaogā e Tokelau te tupe Niuhila, ko tona uiga e fuafua te lahi ma te mafai e Tokelau fakatau koloa i Samoa kite mamafa ote tupe Niuhila fakatuha kite tupe Samoa<sup>1</sup>.
- Mai te tauhaga 2013 hove ko koloa uma e fakatau i Tokelau na kaumi mai Samoa. Kote lahiga o iēnei koloa ko ni koloa na toe fakatau atu ki atunuku i fafo, ma na fotu mai i ni tahi atunuku e aofia ai ia Haina, Auhetalia ma Niuhila. Ko tēnei vāega e tupu mai ai te fekehekehenakiga o tau o koloa i kuata takitahi, ma e mafai foki ke māfua mai i nā manakoga ote atunuku, kae vērā foki fakavāomalo, te maua o koloa, vērā foki te fuafuaga o tupe hui. E lahi he āfainaga kite FTKK a Tokelau kāfai kua iei ni hūiga ki nā tau, vērā ma te maua pe he maua o koloa i Samoa.
- E fuafua lava e te nuku nā tau o ana koloa e fakatau (fakatakitakiga kote hikaleti, te ava malohi ma na vai-inu), ma e ono tahuhihi.
- I te Fono Fakamua ia Lulai 2017 na talia ai ke fai he lāfoga (tax) e 325 pahene mō nā hikaleti i te manatu lava ke tipitipi ki lalo te tagohia ote hikaleti, ma vērā ai foki ona fehoahoani kite fakaitiitiga o nā fāmai he pēhi. Talu mai ai nei, e fai lava ma hikihihi nā tau o nā hikaleti e nā Taupulega takitahi. Ona ai kote tūlaga ote mamafa ote hikaleti i te FTKK, ko hō he hūiga i to lātou tau e āfaina lahi ma lahi ai te hūiga kite aofaki ote FTKK e ve ona iloa mai te 2017. I te tau tukutonuga lava ote hē paleni lahi ona ai ko nā pōlihi o tau ote hikaleti, fakatahi ai ma te heahea maua pe hapalai te hikaleti i nā koloa, e fua fakalua te FTKK. E fua muamua ke aofia nā hikaleti, ma toe fua ai kae he aofia ai nā hikaleti. E fakafaigofie ai ma holotonu ai kite “Tobacco free Tokelau 2020”, ma vērā ai ona hē toe kaumi ai te hikaleti e nā koloa ki Tokelau.

## Lavelaveaga

Na fai tēnei lōmiga ma te maeaea lelei i te fatuga, te iloiloga ma te tuhiga o nā fakamatalaga. E he mautinoa e te TNSO e matuai hēai he pahala i tēnei lōmiga. E fakamalie atu ai e hē ono lavelavea tēnei mataeke kāfai kua pahala atu i tēnei lōmiga.

## Taimi

Ko nā lōmiga iēnei e fakahalalau i te initaneti e he tahi mataeke, ma e hē i lalo ote kikilaga a te TNSO. E hē pakū la kite TNSO kāfai kua tuai te fakahalalau atuga o iēnei lōmiga.

[fakaikuga]

<sup>1</sup> The Tokelau Department of Finance tends to fix its exchange rate for the calendar year (currently WST/NZD=1.75), taking out some of the volatility.

Website: [www.tokelau.org.nz/Stats.html](http://www.tokelau.org.nz/Stats.html)

Email: [tso@tokelau.org.nz](mailto:tso@tokelau.org.nz)