



Office of the Council for the Ongoing Government of Tokelau
Tokelau National Statistics Office

Kuata o Hetema, 2022 Fuafakatatau o nā Hūiga ki na Tau o Koloa ma Kaukaunaga a Tokelau

Fakamatalaga tāua

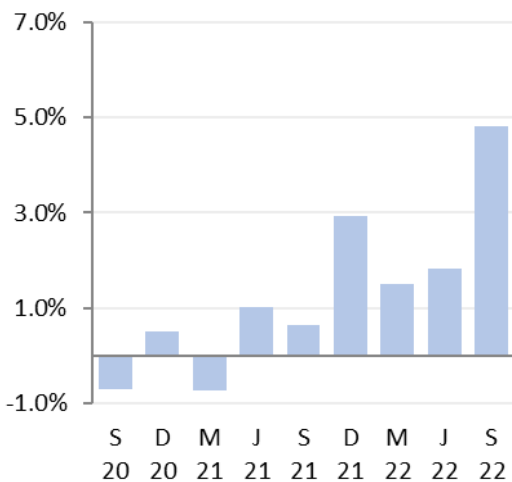
I te kuata o Hetema 2022 fakatuhatuha ki te kuata o Luni 2022:

- Na hikitia i he 4.8 pahene te fuafakatatau o nā hūiga ki nā tau o koloa ma kaukaunaga (FTKK) fakatuhatuha ki te 1.8 pahene na hikitia ai i te kuata i mua atu.
- Ko te hao pito maualuga ki te mahiki o te FTCK e tuha e 2.3 pahene na hau i te kulupu o nā meakai ma vai-inu, ko nā tau na hikitia i he 7.0 pahene i te kuata tēnei.
- Ko te mahiki pito maualuga tona lua ko te kulupu o felakuakiga, na hikitia i he 30.0 pahene, ma e 1.9 pahene tona hao ki te FTCK o te kuata tēnei.
- Oioti te kulupu na paku tona hao ki te FTCK o te kuata tēnei e tuha ma te 0.1 pahene fakailoga tokehe ko te kulupu o fakafiagiaga ma aganuku, ko nā tau na pakū i he 4.5 pahene.

Mai te kuata o Hetema 2021 ki te kuata o Hetema 2022, ko te FTCK na hikitia i he 11.5 pahene. E fakatuha ki te 7.1 pahene na hikitia ai te FTCK mai te kuata o Luni 2021 ki te kuata o Luni 2022.

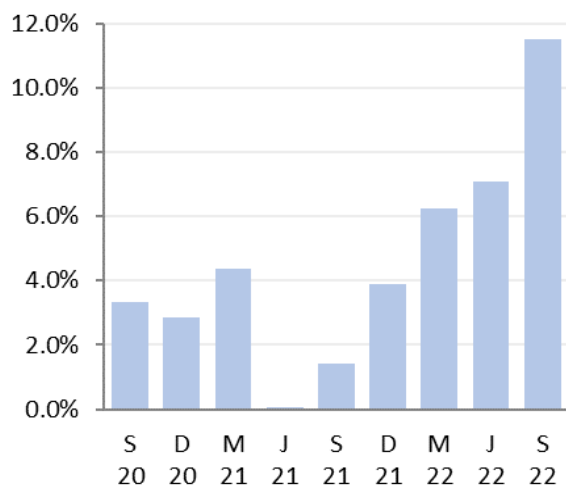
Ko te FTCK e fua ai te hūiga o nā tau o nā koloa ma nā kaukaunaga e fakatau e nā kaiga tautokatahi i Tokelau. E fakamaopopo e te Ofiha o Fuainumela Fakamaumau a Tokelau (TNSO) nā tau o nā koloa mai nā falekoloa vēnā ma nā falekoloa paaka (bulk store) i luga o nā fenua e tolu, fakatahi ai ma nā tau o nā koloa ma nā kaukaunaga mai nā mataeke e aofia ai te felakuakiga (transport), mālohiaga (energy), ma fehokotakiga (telecommunications).

Fuafakatatau o nā tau o Koloa ma Kaukaunaga o Tokelau
Hūiga taki kuata



Fakamatalaga mai: Ofiha o Fuainumela Fakamaumau o Tokelau

Fuafakatatau o nā tau o Koloa ma Kaukaunaga o Tokelau
Hūiga taki tauhaga



Fakamatalaga mai: Ofiha o Fuainumela Fakamaumau o Tokelau

Taimalie Kele Lui
National Statistician

31 Oketopa 2022

Fakamatalaga

Ko nā vāega i lalo e tuku atu ai ni fakamatalaga auiliili āgai ki te fuafakatatau o nā hūiga o nā tau o koloa ma kaukaunaga i Tokelau:

- [Hikitia i he 4.8 pahene te FTKK o te kuata o Hetema 2022](#)
- [Hikitia i he 7.0 pahene te kulupu o meakai ma vai-inu i te kuata tēnei](#)
- [Hikitia i he 1.5 pahene te kulupu o na ava mālohi ma te hikaleti](#)
- [Kotokotoga o nā fehikitakiga o iētahi kulupu i te FTKK i te kuata nei](#)
- [Āfiaga mai nā koloa na hikitia nā tau ma nā koloa na pakū nā tau](#)
- [E 11.5 pahene e hikitia ai te FTKK mō te tauhaga ki te kuata o Hetema 2022](#)

Hikitia i he 4.8 pahene te FTKK o te kuata o Hetema 2022

E 4.8 pahene na hikitia ai te FTKK o te kuata o Hetema 2022; fakatuhatuha ki he 1.8 pahene na hikitia ai te kuata o Luni 2022.

E fokotahi oiote te kulupu mai nā kulupu e iva na fakamaugia e fakailoga tokehe tona hao ki te FTKK o te kuata tēnei, e fā ia kulupu na fakamaugia na hikitia, e fokotahi te kulupu e heki iei he hūiga, kae ko iētahi kulupu e totoe e heki iei he āfainaga ki te FTKK faka-kātoa o te kuata tēnei.

Kulupu	Pahene hao ki te FTKK taki kuata
01. Meakai ma vai-inu	2.3%
02. Ava mālohi ma te hikaleti	0.6%
03. Kie lavalava ma hēvae	0.0%
04. Fale, huavai, eletihe, kēhi ma iētahi huāū	0.0%
05. Meāfale, kope faigāluenga mō te fakaleleiga o kāiga	0.1%
07. Felakuakiga	1.9%
08. Fehokotakiga	0.0%
09. Fakafiafiaga ma aganuku	-0.1%
12. Koloa kehekehe ma kaukaunaga	0.0%
Kātoaga o te FTKK	4.8%

Mātau: E ono hē maua te aofakiga tonu o te FTKK i nā pahene iēnei ona ai kote fakakātoatoaga o nā pahene ki he numela kātoatoa (rounding).

Hikitia i he 7.0 pahene te kulupu o meakai ma vai-inu i te kuata tēnei

Ko nā tau ite kulupu o nā meakai ma nā vai-inu e 7.0 pahene na hikitia ai ite kuata tēnei, ma e 2.3 pahene tona hao ki te FTKK mō te kuata.

Ko nā koloa takitahi na lahi o lātou hao ki te hikitia i te kulupu o nā meakai na pogai i te maualuluga o nā tau o nā koloa iēnei:

- Moa (hikitia i he 32 pahene)
- Lolo fai meakai (hikitia i he 91 pahene)
- Falaoa mata (hikitia i he 22 pahene).

Ko nā koloa takitahi na lahi to lātou hao ki te pakū i te kulupu o nā meakai na pogai i nā koloa iēnei:

- Apa ika (tuna) (pakū i he 31 pahene)
- Meamamoe (lamb chops) (pakū i he 6.3 pahene)
- Alaiha (pakū i he 4.0 pahene).

Ko nā tau o nā koloa i te vāega kulupu o vai-inu na hikitia i he 16 pahene, na māfua lahi mai te tau o nā pepa pauta fai vai-inu hukalaki (hikitia i he 17 pahene), ma nā tahi pauta fai vai-inu fualakau (fruit) (hikitia i he 46 pahene).

Hikitia i he 1.5 pahene te kulupu o te ava malohi ma te hikaleti

Ko te kulupu o nā ava malohi ma te hikaleti na hao i he 0.6 pahene ki te FTKK o te kuata tēnei ona ai ko te hikitia o tau o koloa i he 1.5 pahene. Ko te tūlaga tēnei na feeke e te hikitia o te tau ote pia ma hikaleti e fakatau mai fafo, na hikitia i he 7.2 pahene ma te 1.1 pahene. Ko te mahiki ki te kulupu o te ava malohi ma te hikaleti e fakatuha ki te 0.5 pahene na hikitia ai nā tau, ma te 0.2 pahene hao ki te FTKK o te kuata o Luni 2022.

Kotokotoga o nā fehikitakiga o iētahi kulupu i te FTKK i te kuata nei

Ko te kulupu o felakuakiga ko te kulupu tona lua na kitea na lahi tona hao ki te FTKK o te kuata tēnei, e 1.9 pahene, na hikitia nā tau i he 30 pahene. E vā ona fakamoemoegia, ko te maualuga o te manakoga ke faimalaga mō ni faigamalologa ma nā matakupu tau pihinihi ona kua tatala nā tuakoi, kua hikitia ai ia tau o pāhehe vakalele i he 74 pahene. Ko he tahi vāega na afia ai tēnei hikitagā ite kulupu o felakuakiga ko te hikitia o te tau ote huāū i he 13 pahene mō te kuata o Hetema.

Ko nā tau o nā koloa i te kulupu o meāfale, kope faigāluēga mō te fakaleleiga o kāiga na hikitia i he 1.9 pahene, ma e 0.1 pahene tona hao ki te FTKK o te kuata tēnei. Oioti te kulupu na hao fakailoga tokehe e 0.1 pahene ko te kulupu o fakafiāfiāga ma aganuku, e 4.5 pahene na paku ai nā tau o nā koloa.

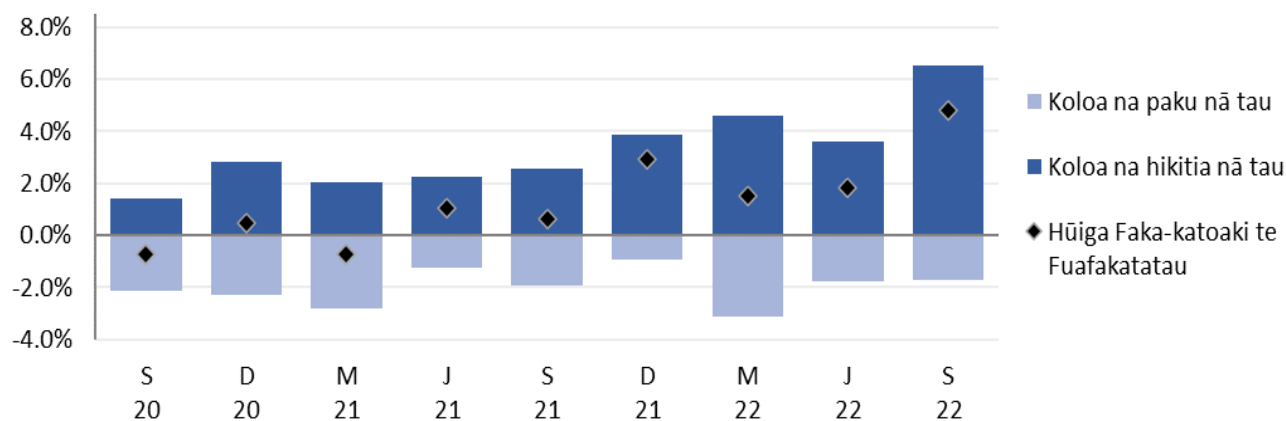
E tolu iētahi kulupu na kitea nā hūiga ki nā tau; kote kulupu o nā kie lavalava ma hēvae (hikitia i he 1.1 pahene), te kulupu o fale, huavai, eletihe, kēhi ma iētahi huāū (hikitia i he 0.5 pahene), ma te kulupu o nā koloa kehekehe ma kaukaunaga (hikitia i he 0.5 pahene). E hē lahi he āfāinaga o nā hao o kulupu iēnei kite FTKK ote kuata tēnei. Ko te kulupu o fehokotakiga e heki iei he hūiga i tēnei kuata.

Āfiāga hikiti koloa na hikitia nā tau ma nā koloa na pakū nā tau

Ko te kalafa i lalo e fakaali mai ai nā afāinaga o nā koloa na hikitia ma na pakū nā tau. Ko te āfāinaga faka-kātoa ko he 4.8 pahene hikitia ki te FTKK ote kuata o Hetema 2022.

Pahene o nā hao ko te Fuafakatatau o nā Koloa ma Kaukaunaga ihe Vaitaimi

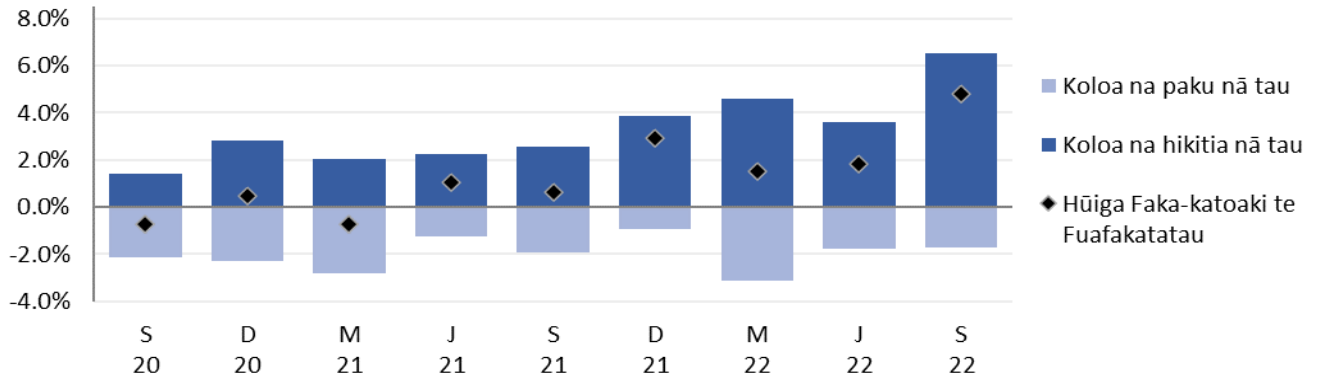
Hūiga taki kuata ki te kuata o Hetema 2022



Fakamatalaga mai: Ofiha o Fuainumela Fakamaumau o Tokelau

Ko te kalafa i lalo e fakahino mai ai nā āfiaga mai nā koloa na hikitia nā tau i nā kulupu takitahi i te kuata tēnei.

Pahene o nā hao ko te Fuafakatatau o nā Koloa ma Kaukaunaga ihe Vaitaimi
Hūiga taki kuata ki te kuata o Hetema 2022



Fakamatalaga mai: Ofiha o Fuainumela Fakamaumau o Tokelau

E 11.5 pahene e hikitia ai te FTKK mō te tauhaga ki te kuata o Hetema 2022.

Ko te FTKK na hikitia i he 11.5 pahene i te tauhaga ki te kuata o Hetema 2022. E fakatuha te tūlaga tēnei ki te 7.1 pahene na hikitia ai te tau o koloa faka-te-tauhaga ki te kuata o Luni 2022.

Ko te kulupu na lahi tona hao ki te āgai ki luga o te FTKK ko te kulupu o nā meakai ma vai-inu e 5.7 pahene, ona ai ko te hikitia i he 18 pahene o tau o koloa ki te FTT mō te tauhaga.

Ko nā koloa takitahi iēnei i nā koloa tau meakai na lahi to lātou pahene hao i te hikitaga o tau:

- Moa (hikitia i he 29 pahene)
- Lolo fai meakai (hikitia i he 86 pahene)
- Alaiha (hikitia i he 33 pahene)

Ko koloa takitahi na lahi ai te pakū ona ko tau o koloa mai te kulupu o meakai ko nā:

- Huka (pakū i he 6.2 pahene)
- Apa ika (atule) (pakū i i he 17 pahene)
- Pepa keke/mahi (pakū i he 7.1 pahene).

Ko te kulupu o te ava mālohi ma te hikaleti ko te vāega tona lua ia na kitea ai te lahi tona hao e 3.5 pahene, ko nā tau nā koloa na agai ki luga i he 9.5 pahene mō te FTKK faka-te-tauhaga.

Ko nā tau i te kulupu o felakuakiga na hikitia i he 33 pahene, e 2.2 pahene tona hao ki te FTKK faka-te-tauhaga. E fā iētahi kulupu na iei o lātou hao ki te FKTT o te tauhaga; mō te kulupu o nā koloa kehekehe ma kaukaunaga e 0.3 pahene tona hao (4ikitia nā tau i he 7.1 pahene). Ko te kulupu o fale, huavai, eletihe, kēhi ma iētahi huāū na hao i he 0.1 pahene hikitia nā tau i he 1.8 pahene). Ko te kulupu o meāfale, kope faigāluega mō te fakaleleiga o kāiga na paku nā tau i he 2.3 pahene, e 0.1 pahenefakailoga tokehe tona hao ki te FTKK ote tauhaga. Ma te kulupu o fakafiagiaga ma aganuku e 4.7 pahene na pakū ai nā tau, e 0.1 pahene fakailoga tōkehe tona hao ki te FTKK faka-te-tauhaga.

Ko nā kulupu e totoe e hē lahi pē hēai foki ni hūiga kite FTKK ote tauhaga kite kuata o Hetema 2022. Mō te kulupu o kie lavalava ma hēvae na paku ai nā tau i he 1.3 pahene, kae e he lahi he āfāinaga kite FTKK faka-te-tauhaga. E heki iei he hūiga kite kulupu o fehokotakiga.

Uiga o nā Kupu

Fakamatalaga āgai ki te Fuafakatatau o Tau o Koloa ma Kaukaunaga (FTKK)

Ko te FTKK ko he fuafakatatau ote hūiga o nā tau o he kete e patino ai nā koloa ma nā kaukaunaga e fakatau e nā kaiga tautokatahi i Tokelau. Ko te fakavehegaga ma te tāua o nā itūkaiga koloa ma kaukaunaga i kete tēnei mō te FTKK e tuku mai ai he ata faka-katoa o nā fakafanoga tupe fakafano a kāiga takitahi i Tokelau.

Ko te hini kautū ote FTKK ke fua ma fakamaumau nā hūiga o tau o ni koloa filifilia i ni fale koloa/fale faigaluega i loto o he vaitaimi. Kāfai kua maitau kua iei ni hūiga āgai kite lahi pe kote mamafa, vērā ma te manaia pe kote lelei o he koloa i te kete, e ono fai ai la ni gaoioiga ke mautinoa ai e hē āfaina lahi te hūiga ote tau ote koloa.

Na kamata nā lomiga ote FTKK a Tokelau ia Hetema 2012, ma na toe fatu te fakavae (rebase) ia Luni 2017. Kote piliota fakahino kamata kote kuata o Māti 2017 (=100.0).

Ko te lihi o koloa ma kaukaunaga i loto ote kete koloa mō te FTKK ma nā fakamatalaga āgai kite metotia e fakaaogā kite fuafuaga ote FTKK e mau uma i te neti "Technical notes: Consumer Price Index" (October 2017 version) www.tokelau.org.nz/Stats.html.

Ni iētahi uiga o kupu

Tau fakahino (price index): E fuafua ai te hūiga o nā tau mō koloa ma kaukaunaga i te vā o ni piliota. E fakaauiiili ki ei nā tau o koloa ma kaukaunaga maua mai i ni fale koloa kehekehe.

Piliota fakahino (index reference): Ko te piliota e fakamatea ai te fakatuhathaga o nā tau i na piliota kehekehe. Fakatakitakiga, kāfai kote numela fakahino mō he piliota e 115.0, ko tona uiga ko nā tau na hikitia i he 15.0 pahene mai te piliota fakahino.

Hao hiki/hao pakū (upward/downward contributions): Ko koloa e takutaku hō i tēnei fakamaumauga, ko koloa ia na lahi ho lātou hao kite aofaki ote FTKK.

Ko te hao o he koloa e aofia ai tona mamafa i te fakahino (index) (ko tona tāua e fua mai i te lahi o tona hao kite vāega tupe fakafano a te kāiga ki koloa ma kaukaunaga) ma te lahi o nā hūiga kite tau.

Kāfai e iei ni koloa e lua e tutuha to la pahene na hikitia ai i te tau, ko te koloa e mamafa tona FTKK e lahi atu ia tona hao kite aofaki ote FTKK. Ko tēnei hao e takua ko te pahene hao (index point).

Pāhehe vakalele: Talu mai te fāmai ote Koviti-19, ko te faitotoka mō na faigamalaga fakavaomalo mō Tokelau na tapunia (Mati 2020). Na galulue fakatahi ai te TNSO ma te kaufaigaluega lagolago a te StatsNZ ke falite he metotia ke fakatūlaga he pāhehe vakalele e fakavae ki nā tau o nā pahehe vakalele inā tauhaga kua teka. I te faiga tēnei, kote fehuihuiakiga kite tau e fakavae ki nā tau o nā pahehe ina kuata kua teka e mataugia ai na vaitau o femalagaakiga.

(Ke mātāu e hē aofia ai nā malaga vakalele e toe fakafoki mai ai ia tagata mai fafo ma/pe mō nā tauale mō ni togafitiga fakavavevave).

Piliota fakailoga (Reference period)

Ko tau o koloa mō te kuata o Hetema na fakamaopopo mai te vā ote Aho 16 Aukuho ma te Aho 1 o Hetema2022 e nā kaufaigālua a nā kau tautua a nā nuku takitahi, fakatahi ai ma te kaufaigālua a te TNSO i Apia.

Tau afiaga (Price influencers)

E iei foki ni tahi māfua ga e ono māfua ai te hūiga ki nā tau o koloa. Ko ni tahi māfua ga iēnei na āfaina ai te FTKK mō te kuata o Hetema, vērā ma te tauhaga 2022:

- E fakaaogā e Tokelau te tupe Niuhila, ko tona uiga e fuafua te lahi ma te mafai e Tokelau fakatau koloa i Samoa kite mamafa ote tupe Niuhila fakatuha kite tupe Samoa¹.
- Mai te tauhaga 2013 hove ko koloa uma e fakatau i Tokelau na kaumai mai Samoa. Kote lahiga o iēnei koloa ko ni koloa na toe fakatau atu ki atunuku i fafo, ma na fotu mai i ni tahi atunuku e aofia ai ia Haina, Auhetalia ma Niuhila. Ko tēnei vāega e tupu mai ai te fekehekehenakiga o tau o koloa i kuata takitahi, ma e mafai foki ke māfua mai i nā manakoga ote atunuku, kae vērā foki fakavāomalo, te maua o koloa, vērā foki te fuafuaga o tupe hui. E lahi he āfainaga kite FTKK a Tokelau kāfai kua iei ni hūiga ki nā tau, vērā ma te maua pe he maua o koloa i Samoa.
- E fuafua lava e te nuku nā tau o ana koloa e fakatau (fakatakitakiga kote hikaleti, te ava malohi ma na vai-inu), ma e ono tahuhihi.
- I te Fono Fakamua ia Iulai 2017 na talia ai ke fai he lāfoga (tax) e 325 pahene mō nā hikaleti i te manatu lava ke tipitipi ki lalo te tagohia ote hikaleti, ma vērā ai foki ona fehoahoani kite fakaitiitiga o nā fāmai he pēhi. Talu mai ai nei, e fai lava ma hikihiki nā tau o nā hikaleti e nā Taupulega takitahi. Ona ai kote tūlaga ote mamafa ote hikaleti i te FTKK, ko hō he hūiga i to lātou tau e āfaina lahi ma lahi ai te hūiga kite aofaki ote FTKK e ve ona iloa mai te 2017. I te tau tukutonuga lava ote hē paleni lahi ona ai ko nā pōlihi o tau ote hikaleti, fakatahi ai ma te heahea maua pe hapalai te hikaleti i nā koloa, e fua fakalua te FTKK. E fua muamua ke aofia nā hikaleti, ma toe fua ai kae he aofia ai nā hikaleti. E fakafaigofie ai ma holotonu ai kite “Tobacco free Tokelau 2020”, ma vērā ai ona hē toe kaumai ai te hikaleti e nā koloa ki Tokelau.

Lavelaveaga

Na fai tēnei lōmiga ma te maeaea lelei i te fatuga, te iloiloga ma te tuhiga o nā fakamatalaga. E he mautinoa e te TNSO e matuai hēai he pahala i tēnei lōmiga. E fakamalie atu ai e hē ono lavelavea tēnei mataeke kāfai kua pahala atu i tēnei lōmiga.

Taimi

Ko nā lōmiga iēnei e fakahalalau i te initaneti e he tahi mataeke, ma e hē i lalo ote kikilaga a te TNSO. E hē pakū la kite TNSO kāfai kua tuai te fakahalalau atuga o iēnei lōmiga.

[fakaikuga]

¹ The Tokelau Department of Finance tends to fix its exchange rate for the calendar year (currently WST/NZD=1.75), taking out some of the volatility.

Website: www.tokelau.org.nz/Stats.html

Email: tso@tokelau.org.nz