



Office of the Council for the
Ongoing Government of Tokelau
Tokelau National Statistics Office

Kuata o Tehema, 2022 Fuafakatatau o nā Hūiga ki nā Tau o Koloa ma Kaukaunaga a Tokelau

Fakamatalaga tāua

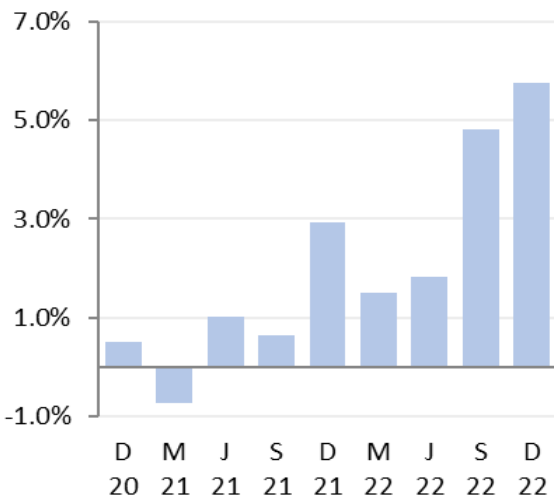
I te kuata o Tehema 2022 fakatuhatuha ki te kuata o Hetema 2022:

- Na hikitia i he 5.8 pahene te fuafakatatau o nā hūiga ki nā tau o koloa ma kaukaunaga (FTKK) fakatuhatuha ki te 4.8 pahene na hikitia ai i te kuata i mua atu.
- Ko te hao pito maualuga ki te mahiki o te FTCK e tuha e 4.1 pahene na hau i te kulupu o nā meakai ma vai-inu, ko nā tau na hikitia i he 12 pahene i te kuata tēnei.
- Ko te mahiki pito maualuga tona lua ko te kulupu o ava mālohi ma te hikaleti, na hikitia i he 5.3 pahene, ma na hao i he 1.9 pahene kite FTCK o te kuata tēnei.
- Ko te kulupu o felakuakiga na lahi tona hao fakailoga tokehe kite FTCK o te kuata tēnei, e 1.8 pahene, ona kote pakū o tau o koloa i he 22 pahene.

Mai te kuata o Tehema 2021 ki te kuata o Tehema 2022, ko te FTCK na hikitia i he 14.6 pahene. E fakatuha ki te 11.5 pahene na hikitia ai te FTCK mai te kuata o Hetema 2021 ki te kuata o Hetema 2022.

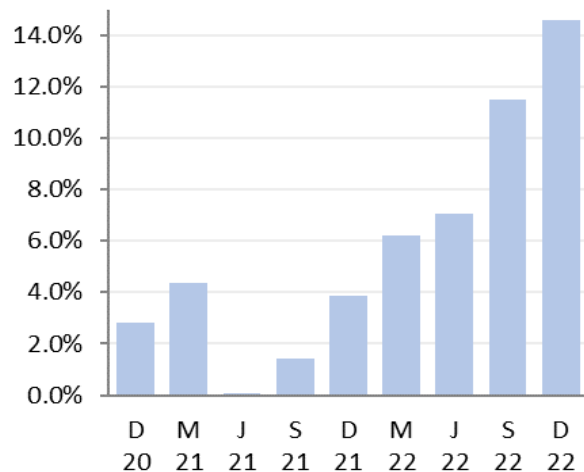
Ko te FTCK e fua ai te hūiga o nā tau o nā koloa ma nā kaukaunaga e fakatau e nā kaiga tautokatahi i Tokelau. E fakamaopopo e te Ofiha o Fuainumela Fakamaumau a Tokelau (TNSO) nā tau o nā koloa mai nā falekoloa vēnā ma nā falekoloa paaka (bulk store) i luga o nā fenua e tolu, fakatahi ai ma nā tau o nā koloa ma nā kaukaunaga mai nā mataeke e aofia ai te felakuakiga (transport), mālohiaga (energy), ma fehokotakiga (telecommunications).

**Fuafakatatau o nā tau o Koloa
ma Kaukaunaga o Tokelau**
Hūiga taki kuata



Fakamatalaga mai: Ofiha o Fuainumela
Fakamaumau o Tokelau

**Fuafakatatau o nā tau o Koloa
ma Kaukaunaga o Tokelau**
Hūiga taki tauhaga



Fakamatalaga mai: Ofiha o Fuainumela
Fakamaumau o Tokelau

Taimalie Kele Lui
National Statistician

31 Ianuali 2023

Website: <http://tokelau.org.nz/Stats.html>

Email: tns@tokelau.org.nz

Fakamatalaga

Ko nā vāega i lalo e tuku atu ai ni fakamatalaga auiliili āgai ki te fuafakatatau o nā hūiga o nā tau o koloa ma kaukaunaga i Tokelau:

- [Hikitia i he 5.8 pahene te FTKK o te kuata o Tehema 2022](#)
- [Hikitia i he 12 pahene te kulupu o meakai ma vai-inu i te kuata tēnei](#)
- [Hikitia i he 5.3 pahene te kulupu o na ava mālohi ma te hikaleti](#)
- [Kotokotoga o nā hūiga o iētahi kulupu i te FTKK i te kuata nei](#)
- [Āfiaga mai nā koloa na hikitia nā tau ma nā koloa na pakū nā tau](#)
- [E 14.6 pahene e hikitia ai te FTKK mō te tauhaga ki te kuata o Tehema 2022](#)

Hikitia i he 5.8 pahene te FTKK o te kuata o Tehema 2022

Ko te FTKK o te kuata o Tehema 2022 na hikitia i he 5.8 pahene, fakatuhatuha ki he 4.8 pahene na hikitia ai te kuata o Tehema 2022.

E lua ia kulupu mai nā kulupu e iva na fakamaugia e fakailoga tokehe tona hao ki te FTKK o te kuata tēnei, e lima ia kulupu na fakamaugia na hikitia, e fokotahi te kulupu e heki iei he hūiga, kae ko iētahi kulupu e totoe e heki iei he āfainaga ki te FTKK faka-kātoa o te kuata tēnei.

Kulupu	Pahene hao ki te FTKK taki kuata
01. Meakai ma vai-inu	4.1%
02. Ava mālohi ma te hikaleti	1.9%
03. Kie lavalava ma hēvae	-0.1%
04. Fale, huavai, eletihe, kēhi ma iētahi huāū	0.0%
05. Meāfale, kope faigāluuga mō te fakaleleiga o kāiga	0.8%
07. Felakuakiga	-1.8%
08. Fehokotakiga	0.0%
09. Fakafiafiaga ma aganuku	0.5%
12. Koloa kehekehe ma kaukaunaga	0.3%
Kātoaga o te FTKK	5.8%

Mātau: E ono hē maua te aofakiga tonu o te FTKK i nā pahene iēnei ona ai kote fakakātoatoaga o nā pahene ki he numela kātoatoa (rounding).

Hikitia i he 12 pahene te kulupu o meakai ma vai-inu i te kuata tēnei

Ko nā tau ite kulupu o nā meakai ma nā vai-inu e 12 pahene na hikitia ai ite kuata tēnei, ma e 4.1 pahene tona hao ki te FTKK mō te kuata.

Ko nā koloa takitahi na lahi o lātou hao ki te hikitia i te kulupu o nā meakai na pogai i te maualuluga o nā tau o nā koloa iēnei:

- Moa (hikitia i he 21 pahene)
- Lolo tunu meakai (hikitia i he 49 pahene)
- Apa ika (atule) (hikitia i he 106 pahene).

Ko nā koloa takitahi na lahi to lātou hao ki te pakū i te kulupu o nā meakai na pogai i nā koloa iēnei:

- Apa ika (tuna) (pakū i he 9.8 pahene)
- Meamamoe (mutton flaps) (pakū i he 8.2 pahene)
- Meakai inu ti (cereal) (pakū i he 7.6 pahene).

Ko nā tau o nā koloa i te vāega kulupu o vai-inu na pakū i he 6.3 pahene, na māfua lahi mai te tau o nā pepa pauta fai vai-inu hukalaki (pakū i he 8.3 pahene), ma te kofe (pakū i he 10 pahene).

Hikitia i he 5.3 pahene te kulupu o te ava malohi ma te hikaleti

Ko te kulupu o te ava malohi ma te hikaleti na hao i he 1.9 pahene ki te FTKK o te kuata tēnei ona ai ko te hikitia o tau o koloa i he 5.3 pahene. Ko te tūlaga tēnei na feeke e te hikitia o te tau ote pia ma hikaleti e fakatau mai fafo, na hikitia i he 33 pahene ma te 2.7 pahene. E fakatuha te mahiki tēnei o tau ite kulupu o te ava malohi ma te hikaleti ite kuata tēnei kite 1.5 pahene na hikitia ai na tau, ma hao i he 0.6 pahene ite FTKK o te kuata o Hetema 2022.

Kotokotoga o nā hūiga o iētahi kulupu i te FTKK i te kuata nei

Ko te kulupu o felakuakiga ko te kulupu ia na kitea na lahi tona hao fakailoga tokehe ki te FTKK o te kuata tēnei, e 1.8 pahene, ona na pakū nā tau i he 22 pahene. Ko tau ite kulupu o kie lavalava ma hēvae na pakū foki i he 1.7 pahene, ma na hao i he pahene tokehe e 0.1 pahene kite FTT o te kuata tēnei.

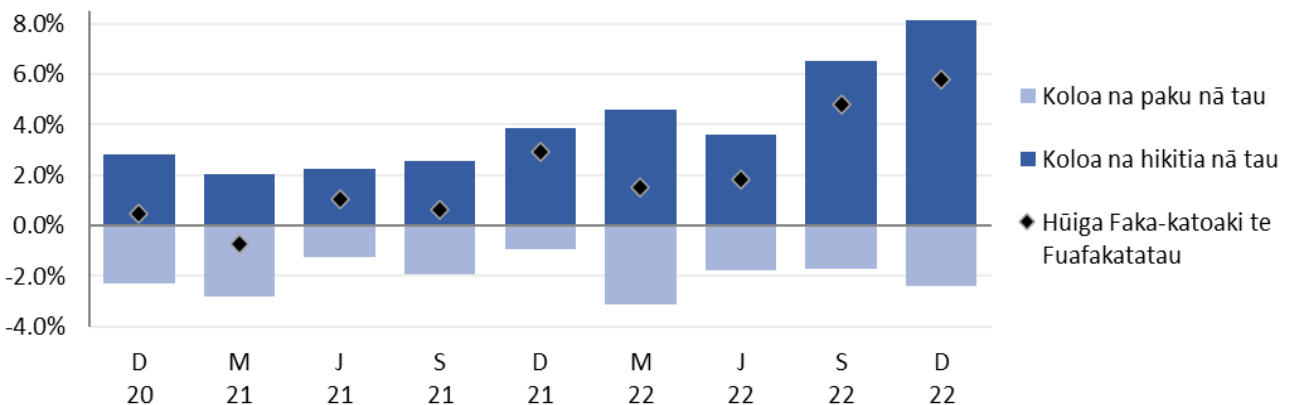
E tolu iētahi kulupu na kitea nā hūiga ki nā tau. Kote kulupu o meāfale, kope faigāluenga mō te fakaleleiga o kāiga na hikitia i he 15 pahene, hao ai i he 0.8 pahene kite FTKK ote kuata tēnei. Ko te kulupu o fakafiafiaga ma aganuku na hao i he 0.5 pahene kite FTKK ote kuata, e tuha ai kote hikitia o tau i he 33 pahene. Ko te kulupu o koloa kehekehe ma kaukaunaga na hikitia ai ia tau i he 8.6 pahene, ma vēnā ai ona hao i he 0.3 pahene kite FTKK.

E fokotahi te tahi kulupu na atagia he hūiga taikole ki tau, kote kulupu o fale, huavai, eletihe, kēhi ma iētahi huāū. Na hikitia ai ia tau i he 0.3 pahene, kae e hē lahi he āfāinaga kite FTKK ote kuata tēnei. Ko te kulupu o fehokotakiga e heki iei he hūiga i tēnei kuata.

Āfiaga hikiti koloa na hikitia nā tau ma nā koloa na pakū nā tau

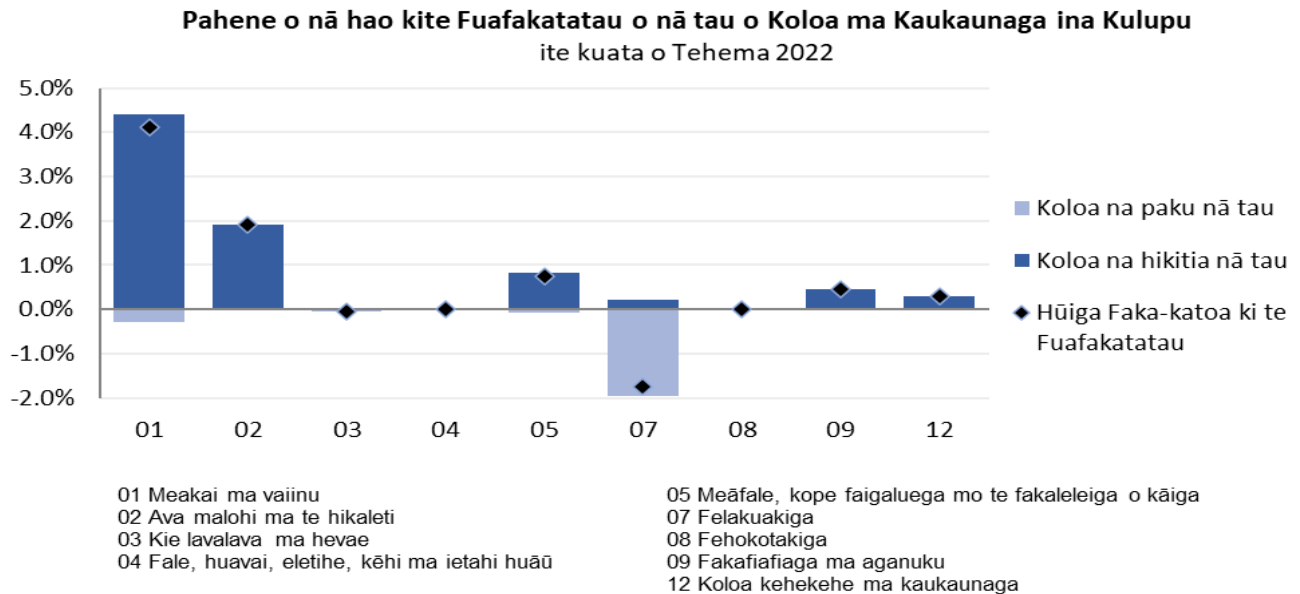
Ko te kalafa i lalo e fakaali mai ai nā afainaga o nā koloa na hikitia ma na pakū nā tau. Ko te āfainaga faka-kātoa ko he 5.8 pahene hikitia ki te FTKK ote kuata o Tehema 2022.

Pahene o nā hao ko te Fuafakatatau o nā Koloa ma Kaukaunaga ihe Vaitaimi
Hūiga taki kuata ki te kuata o Tehema 2022



Fakamatalaga mai: Ofiha Fuainumela Fakamaumau o Tokelau

Ko te kalafa i lalo e fakahino mai ai nā āfiaga mai nā koloa na hikitia nā tau i nā kulupu takitahi i te kuata tēnei.



Fakamatalaga mai: Ofiha o Fuainumela Fakamaumau o Tokelau

E 14.6 pahene e hikitia ai te FTKK mō te tauhaga ki te kuata o Tehema 2022.

Ko te FTKK na hikitia i he 14.6 pahene i te tauhaga ki te kuata o Tehema 2022. E fakatuha te tūlaga tēnei ki te 11.5 pahene na hikitia ai te tau o koloa faka-te-tauhaga ki te kuata o Hetema 2022.

Ko te kulupu na lahi tona hao ki te āgai ki luga o te FTKK ko te kulupu o nā meakai ma vai-inu e 9.1 pahene, ona ai ko te hikitia i he 29 pahene o tau o koloa ki te FTT mō te tauhaga.

Ko nā koloa takitahi iēnei i nā koloa tau meakai na lahi to lātou pahene hao i te hikitaga o tau:

- Moa (hikitia i he 53 pahene)
- Lolo tunu meakai (hikitia i he 203 pahene)
- Meamamoe (chops) (hikitia i he 26 pahene)

Ko koloa takitahi na lahi ai te pakū ona ko tau o koloa mai te kulupu o meakai ko nā:

- Apa fala (pakū i he 55 pahene)
- Fagu hohi (soya) (pakū i i he 14 pahene)
- Meakai inu ti (cereal) (pakū i he 1.0 pahene).

Ko te kulupu o te ava mālohi ma te hikaleti ko te kulupu hohoko ia na kitea ai te lahi tona hao e 5.6 pahene, ona ko nā tau o koloa na agai ki luga i he 15 pahene mō te FTKK faka-te-tauhaga. E māfua lahi ona kote hikitia ote tau ote hikaleti (15 pahene), vēnā nā fagu mālohi (hikitia i he 28 pahene) ma te pia (hikitia i he 12 pahene).

Ko te kulupu o meāfale, kope faigaluega mō te fakaleleiga o kāiga na hikitia nā tau i he 7.7 pahene, e 0.5 pahene tona hao ki te FTKK ote tauhaga. E lima iētahi kulupu na hao kite FTKK faka-te-tauhaga. Ko te kulupu o fakafiafiaga ma aganuku na hao i he 0.4 pahene ite hikitia o tau i he 24 pahene. Ko te kulupu o nā koloa kehekehe ma kaukaunaga na hao i he 0.4 pahene ite hikitia o tau i he 10 pahene. Ko tau i te kulupu o felakuakiga na pakū i he 15 pahene, e 1.2 pahene tona hao ki te FTKK faka-te-tauhaga. Na pakū foki ia tau ite kulupu o kie lavalava ma hēvae i he 3.4 pahene, ma na hao i he pahene fakailoga tokehe e 0.1 kite FTKK faka-te-tauhaga. E heki iei he hūiga kite kulupu o fehokotakiga.

Uiga o nā Kupu

Fakamatalaga āgai ki te Fuafakatatau o Tau o Koloa ma Kaukaunaga (FTKK)

Ko te FTKK ko he fuafakatatau ote hūiga o nā tau o he kete e patino ai nā koloa ma nā kaukaunaga e fakatau e nā kaiga tautokatahi i Tokelau. Ko te fakavehegaga ma te tāua o nā itūkaiga koloa ma kaukaunaga i kete tēnei mō te FTKK e tuku mai ai he ata faka-katoa o nā fakafanoga tupe fakafano a kāiga takitahi i Tokelau.

Ko te hini kautū ote FTKK ke fua ma fakamaumau nā hūiga o tau o ni koloa filifilia i ni fale koloa/fale faigaluega i loto o he vaitaimi. Kāfai kua maitau kua iei ni hūiga āgai kite lahi pe kote mamafa, vērā ma te manaia pe kote lelei o he koloa i te kete, e ono fai ai la ni gaoioiga ke mautinoa ai e hē āfaina lahi te hūiga ote tau ote koloa.

Na kamata nā lomiga ote FTKK a Tokelau ia Hetema 2012, ma na toe fatu te fakavae (rebase) ia Māti 2017. Kote piliota fakahino kamata kote kuata o Māti 2017 (=100.0).

Ko te lihi o koloa ma kaukaunaga i loto ote kete koloa mō te FTKK ma nā fakamatalaga āgai kite metotia e fakaaogā kite fuafuaga ote FTKK e mau uma i te neti “Technical notes: Consumer Price Index” (October 2017 version) www.tokelau.org.nz/Stats.html.

Ni iētahi uiga o kupu

Tau fakahino (price index): E fuafua ai te hūiga o nā tau mō koloa ma kaukaunaga i te vā o ni piliota. E fakaauiiili ki ei nā tau o koloa ma kaukaunaga maua mai i ni fale koloa kehekehe.

Piliota fakahino (index reference): Ko te piliota e fakamatea ai te fakatuhathaga o nā tau i na piliota kehekehe. Fakatakitakiga, kāfai kote numela fakahino mō he piliota e 115.0, ko tona uiga ko nā tau na hikitia i he 15.0 pahene mai te piliota fakahino.

Hao hiki/hao pakū (upward/downward contributions): Ko koloa e takutaku hō i tēnei fakamaumauga, ko koloa ia na lahi ho lātou hao kite aofaki ote FTKK.

Ko te hao o he koloa e aofia ai tona mamafa i te fakahino (index) (ko tona tāua e fua mai i te lahi o tona hao kite vāega tupe fakafano a te kāiga ki koloa ma kaukaunaga) ma te lahi o nā hūiga kite tau.

Kāfai e iei ni koloa e lua e tutuha to la pahene na hikitia ai i te tau, ko te koloa e mamafa tona FTKK e lahi atu ia tona hao kite aofaki ote FTKK. Ko tēnei hao e takua ko te pahene hao (index point).

Pāhehe vakalele: Talu mai te fāmai ote Koviti-19, ko te faitotoka mō na faigamalaga fakavaomalo mō Tokelau na tapunia (Mati 2020). Na galulue fakatahi ai te TNSO ma te kaufaigaluega lagolago a te StatsNZ ke falite he metotia ke fakatūlaga he pāhehe vakalele e fakavae ki nā tau o nā pahehe vakalele inā tauhaga kua teka. I te faiga tēnei, kote fehuihuiakiga kite tau e fakavae ki nā tau o nā pahehe ina kuata kua teka e mataugia ai na vaitau o femalagaakiga. Ite kua toe matala nei o alavaka o Hamoa ia Aukuho, kua mafai ai e te kaufaigaluega ke fakaoga na tau o pahehe vakalele e vērā ona mahani ai mō te kuata o kua teka atu, ma femalagaakiga ite lumanaki. E he toe manakomia la ke toe fakaoga na tau mai na tahi kuata.

Piliota fakailoga (Reference period)

Ko tau o koloa mō te kuata o Tehema 2022 na fakamaopopo mai te vā ote Aho 16 Novema ma te Aho 22 o Tehema 2022 e nā kaufaigaluega a nā kau tautua a nā nuku takitahi, fakatahi ai ma te kaufaigaluega a te TNSO i Apia.

Tau afiaga (Price influencers)

E iei foki ni tahi māfua ga e ono māfua ai te hūiga ki nā tau o koloa. Ko ni tahi māfua ga iēnei na āfaina ai te FTKK mō te kuata o Tehema, vērā ma te tauhaga 2022:

- E fakaaogā e Tokelau te tupe Niuhila, ko tona uiga e fuafua te lahi ma te mafai e Tokelau fakatau koloa i Samoa kite mamafa ote tupe Niuhila fakatuha kite tupe Samoa. E fuafua e te Mataeke of Tupe pe fia te fua mo te fehiuakiga o tupe i kamataga o māhina takitahi. Na mataugia te agai ki lalo te tupe Niuhila fakatuha kite tupe Hamoa ite kuata tēnei, mai te NZD/SAT=1.6 ia Oketopa, NZD/SAT=1.6 ia Novema, ma Tehema e NZD/SAT=1.66.
- Mai te tauhaga 2013 hove ko koloa uma e fakatau i Tokelau na kaumai mai Samoa. Kote lahiga o iēnei koloa ko ni koloa na toe fakatau atu ki atunuku i fafo, ma na fotu mai i ni tahi atunuku e aofia ai ia Haina, Auhetalia ma Niuhila. Ko tēnei vāega e tupu mai ai te fekehekehenakiga o tau o koloa i kuata takitahi, ma e mafai foki ke māfua mai i nā manakoga ote atunuku, kae vērā foki fakavāomalo, te maua o koloa, vērā foki te fuafuaga o tupe hui. E lahi he āfainaga kite FTKK a Tokelau kāfai kua iei ni hūiga ki nā tau, vērā ma te maua pe he maua o koloa i Samoa.
- E fuafua lava e te nuku nā tau o ana koloa e fakatau (fakatakitakiga kote hikaleti, te ava malohi ma na vai-inu), ma e ono tahuhihi.
- I te Fono Fakamua ia Lulai 2017 na talia ai ke fai he lāfoga (tax) e 325 pahene mō nā hikaleti i te manatu lava ke tipitipi ki lalo te tagohia ote hikaleti, ma vērā ai foki ona fehoahoani kite fakaitiitiga o nā fāmai he pēhi. Talu mai ai nei, e fai lava ma hikihihi nā tau o nā hikaleti e nā Taupulega takitahi. Ona ai kote tūlaga ote mamafa ote hikaleti i te FTKK, ko hō he hūiga i to lātou tau e āfaina lahi ma lahi ai te hūiga kite aofaki ote FTKK e ve ona iloa mai te 2017. I te tau tukutonuga lava ote hē paleni lahi ona ai ko nā pōlihi o tau ote hikaleti, fakatahi ai ma te heahea maua pe hapalai te hikaleti i nā koloa, e fua fakalua te FTKK. E fua muamua ke aofia nā hikaleti, ma toe fua ai kae he aofia ai nā hikaleti. E fakafaigofie ai ma holotonu ai kite “Tobacco free Tokelau 2020”, ma vērā ai ona hē toe kaumai ai te hikaleti e nā koloa ki Tokelau.

Lavelaveaga

Na fai tēnei lōmiga ma te maeaea lelei i te fatuga, te iloiloga ma te tuhiga o nā fakamatalaga. E he mautinoa e te TNSO e matuai hēai he pahala i tēnei lōmiga. E fakamalie atu ai e hē ono lavelavea tēnei mataeke kāfai kua pahala atu i tēnei lōmiga.

Taimi

Ko nā lōmiga iēnei e fakahalalau i te initaneti e he tahi mataeke, ma e hē i lalo ote kikilaga a te TNSO. E hē pakū la kite TNSO kāfai kua tuai te fakahalalau atuga o iēnei lōmiga.

[fakaikuga]