



Office of the Council for the  
Ongoing Government of Tokelau  
Tokelau National Statistics Office

# Kuata o luni, 2023 Fuafakatatau o nā Hūiga ki nā Tau o Koloa ma Kaukaunaga a Tokelau

## Fakamatalaga tāua

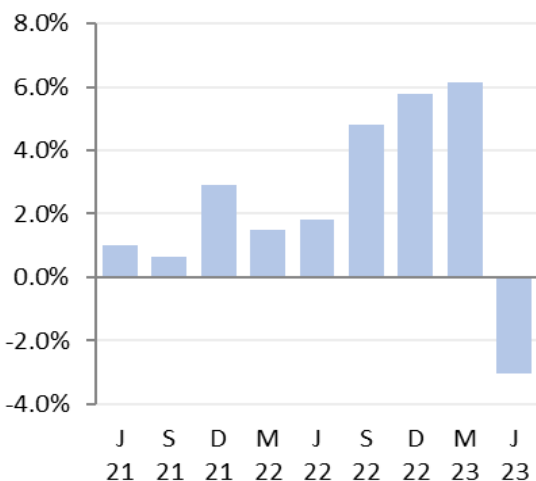
I te kuata o luni 2023 fakatuhatuha ki te kuata o Māti 2022:

- Na pakū te fuafakatatau o nā hūiga ki nā tau o koloa ma kaukaunaga (FTKK) i he 3.0 pahene fakatuhatuha ki te 6.2 pahene na hikitia ai i te kuata i mua atu.
- Ko te hao pito maualuga ki te pakū o te FTKK e tuha e 2.2 pahene na hau i te kulupu o meakai ma vai-inu, na pakū ai nā tau i he 6.3 pahene i te kuata tēnei.
- Ko te pakū pito maualuga na hohoko ake ko te kulupu o te ava mālohi ma te hikaleti, na pakū i he 0.9 pahene, ma na hao i he 0.3 pahene kite FTKK o te kuata tēnei.
- Ko te kulupu o na kie lavalava ma hevae na pito maualuga tona hao ite agai ki luga e 0.1 pahene kite FTKK o te kuata tēnei, ite hikitia o na tau o koloa i he 2.8 pahene.

Mai te kuata o luni 2022 ki te kuata o luni 2023, ko te FTKK na hikitia i he 14.1 pahene. E fakatuha ki te 19.9 pahene na hikitia ai te FTKK mai te kuata o Māti 2022 ki te kuata o Māti 2023.

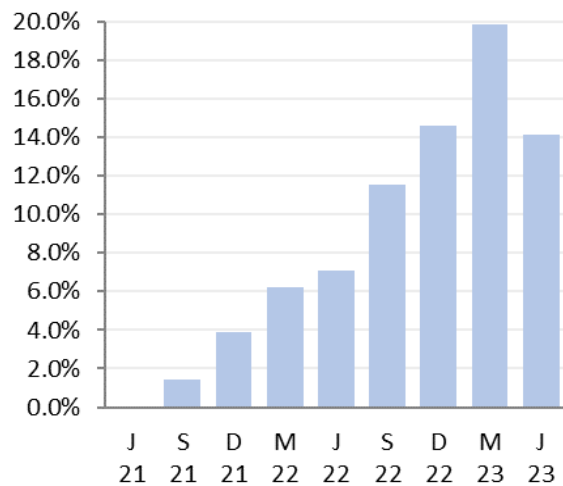
Ko te FTKK e fua ai te hūiga o nā tau o nā koloa ma nā kaukaunaga e fakatau e nā kaiga tautokatahi i Tokelau. E fakamaopopo e te Ofiha o Fuainumela Fakamaumau a Tokelau (TNSO) nā tau o nā koloa mai nā falekoloa vēnā ma nā falekoloa paaka (bulk store) i luga o nā fenua e tolu, fakatahi ai ma nā tau o nā koloa ma nā kaukaunaga mai nā mataeke e aofia ai te felakuakiga (transport), mālohiaga (energy), ma fehokotakiga (telecommunications).

**Fuafakatatau o nā tau o Koloa  
ma Kaukaunaga o Tokelau**  
Hūiga taki kuata



**Fakamatalaga mai:** Ofisa o Fuainumela  
Fakamaumau o Tokelau

**Fuafakatatau o nā tau o Koloa  
ma Kaukaunaga o Tokelau**  
Hūiga taki tauhaga



**Fakamatalaga mai:** Ofiha o Fuainumela  
Fakamaumau o Tokelau

**Ututaimalie Kele Lui  
National Statistician**

**31 Iulai 2023**

## Fakamatalaga

Ko nā vāega i lalo e tuku atu ai ni fakamatalaga auiliili āgai ki te fuafakatatau o nā hūiga o nā tau o koloa ma kaukaunaga i Tokelau:

- [Pakū i he 3.0 pahene te FTKK o te kuata o Luni 2023](#)
- [Ko te kulupu o meakai ma vai-inu na pakū i he 6.3 pahene i te kuata tēnei](#)
- [Ko te kulupu o na ava mālohi ma te hikaleti na pakū i he 0.9 pahene](#)
- [Kotokotoga o nā hūiga o iētahi kulupu i te FTKK i te kuata nei](#)
- [Āfiaga mai nā koloa na hikitia nā tau ma nā koloa na pakū nā tau](#)
- [E 14.1 pahene na hikitia ai te FTKK mō te tauhaga ki te kuata o Luni 2023](#)

## Pakū i he 3.0 pahene te FTKK o te kuata o Luni 2023

Ko te FTKK o te kuata o Luni 2023 na pakū i he 3.0 pahene, fakatuhatuha ki he 6.2 pahene na hikitia ai te kuata o Māti 2022.

E lua ia kulupu mai nā kulupu e iva o te FTKK na fakamaugia na hikitia tona hao ki te FTKK o te kuata tēnei, e fā ia kulupu na fakamaugia na fakailoga tōkehe, e fokotahi e heki iei he hūiga, kae ko iētahi kulupu e totoe e heki iei he āfainaga ki te FTKK faka-kātoa.

Kulupu	Pahene hao ki te FTKK taki kuata
01. Meakai ma vai-inu	-2.2%
02. Ava mālohi ma te hikaleti	-0.3%
03. Kie lavalava ma hēvae	0.1%
04. Fale, huavai, eletihe, kēhi ma iētahi huāū	0.0%
05. Meāfale, kope faigāluenga mō te fakaleleiga o kāiga	-0.3%
07. Felakuakiga	0.1%
08. Fehokotakiga	0.0%
09. Fakafiafiaga ma aganuku	0.0%
12. Koloa kehekehe ma kaukaunaga	-0.3%
Kātoaga o te FTKK	-3.0%

**Mātau:** E ono hē maua te aofakiga tonu o te FTKK i nā pahene iēnei ona ai kote fakakātoatoaga o nā pahene ki he numela kātoatoa (rounding).

## Ko te kulupu o meakai ma vai-inu na pakū i he 6.3 pahene i te kuata tēnei

Ko nā tau ite kulupu o nā meakai ma nā vai-inu na pakū ite 6.3 pahene ite kuata tēnei, ma e 2.2 pahene tona hao ki te FTKK mō te kuata.

Ko nā koloa takitahi na lahi o lātou hao ki te pakū i te kulupu o nā meakai na pogai i te maualalalo o nā tau o nā koloa iēnei:

- Moa (pakū i he 15 pahene)
- Huka (pakū i he 35 pahene)
- Meamamoe (lamb chops) (pakū i he 15 pahene).

Ko nā koloa takitahi na lahi to lātou hao ki te hikitia i te kulupu o nā meakai na pogai i te maualuluga o nā tau o nā koloa iēnei:

- Haimini (hikitia i he 13 pahene)
- Falaoa mata (hikitia i he 7.0 pahene)
- Hohi meio (mayonnaise) (hikitia i he 14 pahene).

Ko nā tau o nā koloa i te vāega kulupu o vai-inu na pakū i he 0.2 pahene, na māfua lahi mai te tau o nā kofe fai tī, na pakū i he 14 pahene.

### Ko te kulupu o na ava mālohi ma te hikaleti na pakū i he 0.9 pahene

Ko te kulupu o te ava malohi ma te hikaleti na hao i he 0.3 pahene fakailoga tokehe ki te FTKK o te kuata tēnei ona ai ko te pakū o tau o koloa i he 0.9 pahene. Ko te tūlaga tēnei na feeke lahi e te pakū ite tau o te hikaleti i he 2.5 pahene. Ko te pakū tēnei ite kulupu o te ava malohi ma te hikaleti ite kuata tēnei e fakatuha kite 3.0 pahene na hikitia ai na tau, ma te 1.1 pahene hao ki te FTKK o te kuata o Māti 2023.

### Kotokotoga o nā hūiga o iētahi kulupu i te FTKK i te kuata nei

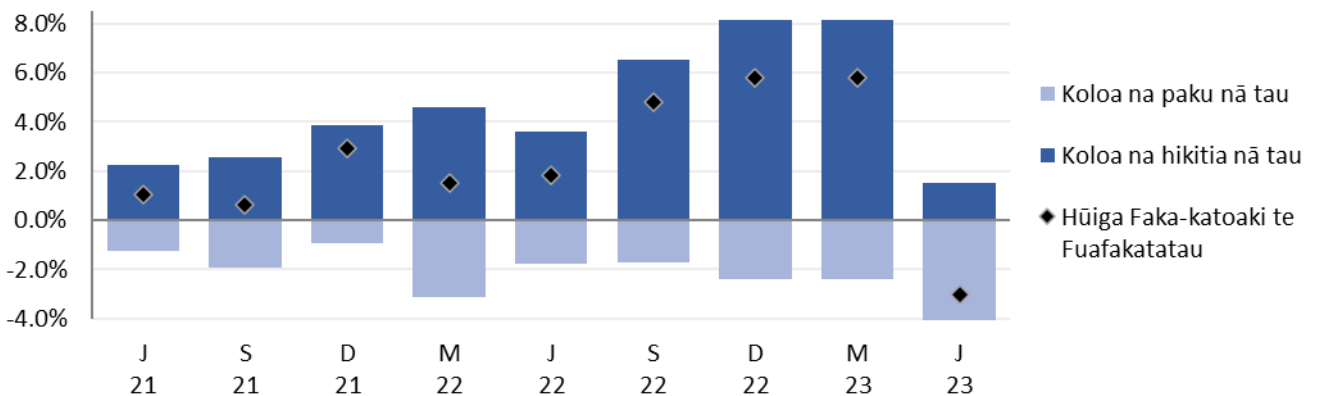
Ko te kulupu o kie lavalava ma hevae ko te kulupu ia na kitea na lahi tona hao fakaopoopo ki te FTKK o te kuata tēnei, e 0.1 pahene, na Hikitia ai nā tau ite 2.8 pahene. Ko na tau i na kulupu o meāfale, kope faigāluenga mō te fakaleleiga o kāiga ma te kulupu o koloa kehekehe ma kaukaunaga na pakū i he 6.4 pahene, ma te 8.6 pahene. Ko na kulupu uma ienei e taki 0.3 pahene fakailoga tōkehe na hao kite FTKK o te kuata tēnei. Ko te hao o te kulupu o felakuakiga e 0.1 pahene, na hikitia ai na tau ite 0.6 pahene.

Ko nā kulupu e totoe e hē lahi ni hūiga na kitea ai. Ko te kulupu o fakafiafiaga ma aganuku (pakū i he 1.1 pahene), ko te kulupu o fale, huavai, eletihe, kēhi ma iētahi huāū (hikitia i he 0.3 pahene), ko o latou hao e heki lahi he āfainaga o na kulupu ienei kite FTKK o te kuata tēnei. Ko te kulupu o fehokotakiga e heki iei he hūiga i te kuata tēnei.

### Āfiaga o nā koloa na hikitia nā tau ma nā koloa na pakū nā tau

Ko te kalafa i lalo e fakaali mai ai nā afainaga o nā koloa na hikitia ma na pakū nā tau. Ko te āfainaga faka-kātoa ko he 3.0 pahene pakū i te FTKK o te kuata o Luni 2023.

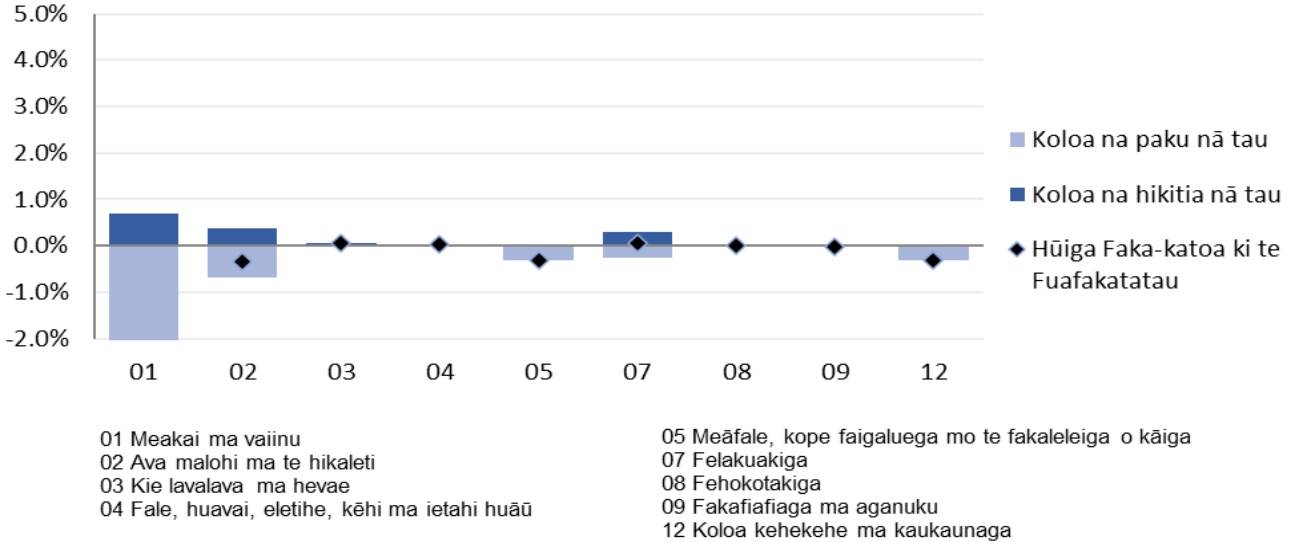
**Pahene o nā hao ko te Fuafakatatau o nā Koloa ma Kaukaunaga ihe Vaitaimi**  
Hūiga taki kuata ki te kuata o Luni 2023



**Fakamatalaga mai:** Ofiha Fuainumela Fakamaumau o Tokelau

Ko te kalafa i lalo e fakahino mai ai nā āfiaga mai nā koloa na hikitia nā tau i nā kulupu takitahi i te kuata tēnei.

**Pahene o nā hao kite Fuafakatatau o nā tau o Koloa ma Kaukaunaga ina Kulupu**  
ite kuata o Luni 2023



**Fakamatalaga mai:** Ofiha o Fuainumela Fakamaumau o Tokelau

### E 14.1 pahene na hikitia ai te FTKK mō te tauhaga ki te kuata o Luni 2023.

Ko te FTKK na hikitia i he 14.1 pahene i te tauhaga ki te kuata o Luni 2023. E fakatuha ki te 19.9 pahene na hikitia ai te tau o koloa faka-te-tauhaga ki te kuata o Māti 2022.

Ko te kulupu na lahi tona hao ki te āgai ki luga o te FTKK ko te kulupu o nā meakai ma vai-inu e 5.6 pahene, ko na tau na hikitia ai ite 17 pahene te FTT mō te tauhaga.

Ko nā koloa takitahi iēnei i nā koloa tau meakai na lahi to lātou pahene hao i te hikitagā o tau:

- Moa (hikitia i he 28 pahene)
- Lolo tunu meakai (hikitia i he 147 pahene)
- Falaoa mata (hikitia i he 47 pahene)

Ko koloa takitahi na lahi ai te pakū ona ko tau o koloa mai te kulupu o meakai ko nā:

- Apa ika (tuna) (pakū i he 21 pahene)
- Pepa keke/mahi (pakū i i he 15 pahene)
- Meamamoe (mutton flaps) (pakū i he 8.1 pahene).

Ko te kulupu o felakuakiga na kitea ai te hao pito maualuluga e hohoko e 3.5 pahene, ko na tau na hikitia i he 55 pahene mō te FTKK faka-te-tauhaga. E mafua lahi te tulaga tenei ona ko te hikitia o te tau ote penihini (hikitia ite 99 pahene), vēnā nā pahehe vakalele (hikitia ite 19 pahene).

Ko na tau ite kulupu o te ava mālohi ma te hikaleti na hikitia i he 9.0 pahene, e 3.4 pahene tona hao ki te FTKK faka-te-tauhaga. E lima iētahi kulupu na fai hao kite FTKK faka-te-tauhaga; te kulupu o na fale, huavai, eletihe, kēhi ma iētahi huāū e 0.7 pahene tona hao (hikitia na tau ite 12.5 pahene). Ko te kulupu o nā koloa ma na kaukaunaga kehekehe e 0.4 pahene tona hao, (hikitia na tau ite 10 pahene). Ko te kulupu o fakafiafiaga ma aganuku e 0.4 pahene tona hao, (hikitia na tau ite 23 pahene). Ko te kulupu o meāfale, kope faigaluega mō te fakaleleiga o kāiga e 0.3 pahene tona hao, (hikitia na tau ite 5.3 pahene). Ma te kulupu o na kie lavalava ma hēvae na hikitia na tau i he 0.6 pahene, ko tona hao e heai hona afainaga kite FTKK faka-te-tauhaga. E heki iei he hūiga kite kulupu o fehokotakiga.

## Uiga o nā Kupu

### Fakamatalaga āgai ki te Fuafakatatau o Tau o Koloa ma Kaukaunaga (FTKK)

Ko te FTKK ko he fuafakatatau ote hūiga o nā tau o he kete e patino ai nā koloa ma nā kaukaunaga e fakatau e nā kaiga tautokatahi i Tokelau. Ko te fakavehegaga ma te tāua o nā itūkaiga koloa ma kaukaunaga i kete tēnei mō te FTKK e tuku mai ai he ata faka-katoa o nā fakafanoga tupe fakafano a kāiga takitahi i Tokelau.

Ko te hini kautū ote FTKK ke fua ma fakamaumau nā hūiga o tau o ni koloa filifilia i ni fale koloa/fale faigaluega i loto o he vaitaimi. Kāfai kua maitau kua iei ni hūiga āgai kite lahi pe kote mamafa, vērā ma te manaia pe kote lelei o he koloa i te kete, e ono fai ai la ni gaoioiga ke mautinoa ai e hē āfaina lahi te hūiga ote tau ote koloa.

Na kamata nā lomiga ote FTKK a Tokelau ia Hetema 2012, ma na toe fatu te fakavae (rebase) ia Mati 2017. Kote piliota fakahino kamata kote kuata o Mati 2017 (=100.0).

Ko te lihi o koloa ma kaukaunaga i loto ote kete koloa mō te FTKK ma nā fakamatalaga āgai kite metotia e fakaaogā kite fuafuaga ote FTKK e mau uma i te neti "Technical notes: Consumer Price Index" (October 2017 version) [www.tokelau.org.nz/Stats.html](http://www.tokelau.org.nz/Stats.html).

### Ni iētahi uiga o kupu

**Tau fakahino (price index):** E fuafua ai te hūiga o nā tau mō koloa ma kaukaunaga i te vā o ni piliota. E fakaauiiili ki ei nā tau o koloa ma kaukaunaga maua mai i ni fale koloa kehekehe.

**Piliota fakahino (index reference):** Ko te piliota e fakamatea ai te fakatuhuhaga o nā tau i na piliota kehekehe. Fakatakitakiga, kāfai kote numela fakahino mō he piliota e 115.0, ko tona uiga ko nā tau na hikitia i he 15.0 pahene mai te piliota fakahino.

**Hao hiki/hao pakū (upward/downward contributions):** Ko koloa e takutaku hō i tēnei fakamaumauga, ko koloa ia na lahi ho lātou hao kite aofaki ote FTKK.

Ko te hao o he koloa e aofia ai tona mamafa i te fakahino (index) (ko tona tāua e fua mai i te lahi o tona hao kite vāega tupe fakafano a te kāiga ki koloa ma kaukaunaga) ma te lahi o nā hūiga kite tau.

Kāfai e iei ni koloa e lua e tutuha to la pahene na hikitia ai i te tau, ko te koloa e mamafa tona FTKK e lahi atu ia tona hao kite aofaki ote FTKK. Ko tēnei hao e takua ko te pahene hao (index point).

### Piliota fakailoga (Reference period)

Ko tau o koloa mō te kuata o Luni 2023 na fakamaopopo mai te vā ote Aho 15 Mati ma te Aho 15 Me 2023 e nā kaufaigālua a nā kau tautua a nā nuku takitahi, fakatahi ai ma te kaufaigālua a te TNSO i Apia ma Tokelau.

## Tau afiaga (Price influencers)

E iei foki ni tahi māfua ga e ono māfua ai te hūiga ki nā tau o koloa. Ko ni tahi māfua ga iēnei na āfaina ai te FTKK mō te kuata o Luni, vērā ma te tauhaga 2023 e aofia ai ona:

- E fakaaogā e Tokelau te tupe Niuhiia, ko tona uiga e fuafua te lahi ma te mafai e Tokelau fakatau koloa i Samoa kite mamafa o te tupe Niuhiia fakatuha kite tupe Samoa. E fuafua e te Mataeke of Tupe pe fia te fua mo te fehiuakiga o tupe i kamataga o māhina takitahi. Na mataugia te agai ki lalo te tupe Niuhiia fakatuha kite tupe Hamoa ite kuata tēnei, mai te NZD/SAT=1.68 maia Apelila, NZD/SAT=1.68 ia Me, ma Luni e NZD/SAT=1.68.
- Mai te tauhaga 2013 hove ko koloa uma e fakatau i Tokelau na kaumai mai Samoa. Kote lahiga o iēnei koloa ko ni koloa na toe fakatau atu ki atunuku i fafo, ma na fotu mai i ni tahi atunuku e aofia ai ia Haina, Auhetalia ma Niuhiia. Ko tēnei vāega e tupu mai ai te fekehekehenakiga o tau o koloa i kuata takitahi, ma e mafai foki ke māfua mai i nā manakoga o te atunuku, kae vērā foki fakavāomalo, te maua o koloa, vērā foki te fuafuaga o tupe hui. E lahi he āfainaga kite FTKK a Tokelau kāfai kua iei ni hūiga ki nā tau, vērā ma te maua pe he maua o koloa i Samoa.
- E fuafua lava e te nuku nā tau o ana koloa e fakatau (fakatakita kote hikaleti, te ava malohi ma na vai-inu), ma e ono tahuhihi.
- I te Fono Fakamua ia Lulai 2017 na talia ai ke fai he lāfoga (tax) e 325 pahene mō nā hikaleti i te manatu lava ke tipitipi ki lalo te tagohia o te hikaleti, ma vērā ai foki ona fehoahoani kite fakaititiga o nā fāmai he pēhi. Talu mai ai nei, e fai lava ma hikihihi nā tau o nā hikaleti e nā Taupulega takitahi. Ona ai kote tūlaga o te mamafa o te hikaleti i te FTKK, ko hō he hūiga i to lātou tau e āfaina lahi ma lahi ai te hūiga kite aofaki o te FTKK e ve ona iloa mai te 2017. I te tau tukutonuga lava o te hē paleni lahi ona ai ko nā pōlihi o tau o te hikaleti, fakatahi ai ma te heahea maua pe hapalai te hikaleti i nā koloa, e fua fakalua te FTKK. E fua muamua ke aofia nā hikaleti, ma toe fua ai kae he aofia ai nā hikaleti. E fakafaigofie ai ma holotonu ai kite “Tobacco free Tokelau 2020”, ma vērā ai ona hē toe kaumai ai te hikaleti e nā koloa ki Tokelau.

## Lavelaveaga

Na fai tēnei lōmiga ma te maeaea lelei i te fatuga, te iloiloga ma te tuhiga o nā fakamatalaga. E he mautinoa e te TNSO e matuai hēai he pahala i tēnei lōmiga. E fakamalie atu ai e hē ono lavelavea tēnei mataeke kāfai kua pahala atu i tēnei lōmiga.

## Taimi

Ko nā lōmiga iēnei e fakahalalau i te initaneti e he tahi mataeke, ma e hē i lalo o te kikilaga a te TNSO. E hē pakū la kite TNSO kāfai kua tuai te fakahalalau atuga o iēnei lōmiga.

[fakaikuga]