

LAFU and VAKILI: Sustainable Traditional Methods for CONSERVING NATURAL RESOURCES

My first encounter with trying to understand the two concepts of *LAFU* and *VAKILI* was during my lower-primary school days at Don Bosco Catholic Mission School, Nukunonu in the early 1970s. In those early childhood days I could hear the village crier the late Sargent Sanele Fala Patelesio (RIP) making public announcements in the streets every Monday early evenings. The town crier was actually making known to the whole village what activities the Taupulega had planned for the week in their weekly meetings every Monday. As I became fully cognisant of the language and content of some of those early public announcements, two words, *LAFU* and *VAKILI* never failed to feature in those weekly announcements.

They went something like this — “*Kua Lafu te Atu Motu, kae tatala te Kavakava. E taki lua te kaukie a te fafine. E fai te Vakili*”.

The gist of the announcement meant that the small islets on the South-Eastern side of Nukunonu are out of bounds while the islets and stretch of land to the North-Eastern side of the island is open. Two young coconut palm sprout per adult woman is permitted. Everyone is reminded of the checkpoint upon arrival home from the harvesting site. The duration for an imposed *LAFU* varies from one to four weeks.

The natural resources management implication of the announcement meant that the out of bounds portion of the island including all its land, coastal and marine resources are strictly prohibited until further notice. Likewise until further instructions, the portion of the island that is open meant harvesting resources from that particular area is permissible. The specific reference to the young coconut palm sprout and limiting to two per adult woman was to control overharvesting that resource used specifically to make handicrafts in the forms of fans and baskets.

The impact of uncontrolled harvesting of young coconut palm sprouts as we know it today could permanently destroy growth to the young coconut tree forest a significant source of sustenance during those times. Whoever ventured out to the permissible area during the week knew it was a requirement to, when they returned home should alert the *Taupulega* member on duty roster to carry out the *VAKILI* (check point to ensure the number of young coconut palm sprouts is equal to the number of women in a particular household). Although no specific reference to the other land, coastal and marine resources in the usual announcements, everyone knew that bird netting, coconut crab hunting and all forms of fishing is taboo around the *LAFU* imposed area. Anyone caught doing unauthorized activities within the taboo area was an open invitation to not only be dealt with by the *Taupulega* verbal punishment but also incurred a hectic monetary fine in addition.

What I wanted to highlight here is the fact that we, the people including all forms of life in Tokelau today did not arrive at its current status of the environment in a vacuum? We owe all credits to our forefathers and those before them for nurturing our natural environment to the state we find it today. We must never lose sight of that natural phenomenon and we must make it our duty to continue nurturing the environment to the best we can during our life time for our children and their future line of children.

In the last issue of *Utuola* E-News I alluded to the concept of *Utuola*. Hence *LAFU* and *VAKILI* are therefore subsidiaries and linked in well to the equation of *Utuola*. Furthermore, who could argue that traditional Tokelau was not at all fully conscious of the notions of sustainability and conservation of contemporary times? Tokelau had their own version of conservation that extends way beyond the inception of institutionalized education systems from offshore. Academia and global funding systems today make it a requirement for under-developed countries to adhere to a particular system in order to attract funding— a luxury our ancestors managed without. Although comforting to know that external funding is available when requested in one's format, each and everyone of us must still do our part for the environment? To think of it, who wants to live in a degraded Tokelau full of pollution, dead lagoons and unbearable heat? When our environment is strong, people live in a system where high quality life is the norm, a clean healthy environment, a satisfactory level of economic well-being, and a robust level of social fulfilment. Getting there is of course our collective choice! We must act in the now and today!

Ke *Utuola* ia Tokelau!

♦ Mika Perez

HEADLINES STORIES

	Page
• EDNRE department celebrates achievements	2
• Bio Security Consultation	3
• Matiti Career Day	4
• National water Security Officer	5
• EDNRE staff took the Tifitifi out for it first run	5
• World Environment Day 2018: 'Beat Plastic Pollution	6—8
• Matiti School integrated new school program this year	9
• FAO projects in Tokelau	9
• Waste Management Updates	10
• Nuku engagement in tourism activities	11
• Hilarious Corner	11
• Biosecurity Updates	12-14
• Whos Who in Nukunonu Business Community	15
• Whale Shark in Nukunonu Lagoon	16
• Re-enforcing extra biosecurity measures for Tokelau	16
• Deep Sea Mining Workshop	17
• An authentic interview with Kuresa Craft owner	18
• Tulaele 2 units Accommodation	19
• Weather Forecast	20
• Upcoming Events	21



EDNRE department celebrates achievements

The Department of EDNRE celebrated its three initiatives on Monday, 4th June at Matiti School.

The celebration marked the inauguration of the Tourism new boat named *Tifitifi* as well as the completion of the nursery and construction of a Flag pole. Environment Officer, Christian Perez led the program by welcoming everyone before Deacon Salesio Lui blessed the three pieces of development with a prayer session.

Deacon Lui was given the first honour of cutting the ribbon for the flag pole to mark these achievements. The *Tifitifi* ribbon was cut by Fatupaepae representative, Palepa Perez and the Nursery ribbon was cut by Elder Ioane Nui Tumua.



Following the official ribbon cutting ceremony, Acting Faipule Lino Isaia delivered his remarks by thanking the department staff for their hard work in making these three initiatives a reality.

Matiti Staff and students sang the National Anthem while the Tokelau flag was hoisted high. Elder Ioane Nui Tumua gave the vote of thanks and refreshment was served. Refreshment was prepared by EDNRE staffs.

During the refreshments, the Marketing Officer Vanikai Filipo delivered a brief summary on the meaning behind the name of the Tourism Boat "*Tifitifi*".

Despite a brief slight shower, the program was well attended by Acting Faipule, Lino Isaia, The Hon Aliko Puluenuku Peter Patelesio, Elders, Taupulega representatives, Youth and Matiti Students & Staff.

Background Information

Nursery – This project is a partnership between the Environment division and the Pacific Office of the Food and Agriculture Organisation FAO. The objective of the project is to plant seedlings and shrubs for home gardens and for coastal replanting.

Tokelau Flag & Flag Pole – At the March 2018 General Fono in Fakaofu, the Minister of EDNRE, The Hon Aliko Faipule, Kelihiano Kalolo, gifted each Puluenuku with a Tokelau Flag each and a flag pole which was taken directly to each island. This was for each of Tokelau's schools. Tialeniu in Fakaofu, Matiti in Nukunonu and Matauala in Atafu. In his speech for the gifts, the minister alluded to the school children as the future resources of Tokelau and its economic development efforts.

Tourism Boat – This is an initiative under the Economic Development Division in promoting Tourism in Tokelau. Nukunonu was the pilot run for Village and Lagoon tours and the Tourism Boat will assist with the Lagoon tours for Nukunonu.

"Tifitifi" – The name was chosen from a competition put forth to Matiti students. A total of 52 names and definitions were submitted by the students and six outstanding names were shortlisted by a committee. These six names were given to the Taupulega for their final selection. *Tifitifi* was the winning name which was submitted by Year 8 student Telau Perez.

♦ Vanikai Filipo

Fakauigaga ote igoa Tifitifi

Ko te *Tifitifi* ko he ika e lahi lava ki te he amanakia I faiva o tautai o te uluulu ma na gutu koko. Aihea nei? Aua nei e pahivi? Aua nei ko te ika e he malie ki te kai? Aua nei ko te Tifitifi ko he ika iviivia kae he lahi ona kanohi? Ko te lahiga ona Tifitifi ina inati ma na faiva e tiaki.

Ka ko taku piki kite igoa *Tifitifi*
Aua ko he ika e manaia ona lanu,
Ko he ika tinae kafai e hopo. E ia mafaia oi tele fakatafa kafai e mahaia I luga ote uluulu peko luga ona gutukoko kafai e huahua mai te tai ke hao ai ia ki te loloto. I he matauaga ki te vaka tulihi e momoko ke veia ko te tele ate Tifitifi Ke hao I ho he tai, ma ho he matagi, Ke hao ia ola o taga- ta ka fakaaoga tenei vaka.
Ke tele tonu te *Tifitifi*

♦ Telau Perez, Year 8, Matiti School.



Economic Development Division staff showing off tourist boat *Tifitifi*



Tokelau flag hoisted high above Matiti School



Plant nursery house, Nukunonu

Senior Biosecurity Officer along with the director of EDNRE headed to Tokelau to consult with the three nuku on Bio Security Rules 2003.

The consultation, organised by environment division was first conducted on Atafu on the 7th of June before heading for the Taupulega of Nukunonu on the 11th June 2018. Unfortunately, the team could not make it to Fakaofo due to a boarder closure.

The aimed of the consultation was to strengthen Bio Security Rules and putting it to action through wide awareness and the issues pertaining to the following rules:

- Limited commitment and resource allocation to implementation of a national Bio-Security Rules 2003
- Current import and export permit procedures vs Bio-Security Regulation Law
- Quarantine/Fumigation procedures for Tokelau of all goods are nonexistence

A key issue expressed during the consultation was the lack of commitment and on-going funding for implementation of the Bio-Security Rules 2003. A number of reasons were provided for the lack of commitment, including: limited government resources and staff; lack of public awareness on the impacts (consequences) of relaxed Bio Security procedures; and lack of clear direction and coordination. Most of the consultation dialog outlined that a lack of resourcing and on-going funding, that can impact either EDNRE and/or Nuku abilities to deliver components of the Bio Security Rules, and the lack of activities to manage invasive pests, and to strengthen interaction with taupulega environment reps, and government departments on Bio Security Rules 2003 and invasive pest issues.

During consultations some suggested the level of resourcing required to fully develop and implement the Bio Security Rules would not be committed without added stimulus similar to that of our neighboring country, Samoa, in particular quarantine procedures (fumigation procedures), import permit requirements etc.. Some comments argued that stronger evidence of the impacts of invasive pests is needed to substantiate biosecurity actions and investment in managing the risks at all levels of importation of goods into Tokelau. We outlined potential links between the current level of commitment and funding, and a lack of demonstrated impacts of invasive pests on economy, the environment, and the community.

One taumatua commented: 'The consequence of relaxed priority, commitment to, and resourcing of the Bio Security Rules across Tokelau, reflect the lack or realization of predicted impacts of established invasive species settling on Tokelau. It seems to me that, in previous years the Government of Tokelau (referring to the GF) does not take Biosecurity very seriously therefore not accorded a priority? The Department of EDNRE is only doing its best and if government support is not there, how do we expect them to solve all Tokelau's infinite biosecurity problems?'

EDNRE expressed on the lack of consistent funding arrangements, including cost recovery of Nuku waste, personal waste that the department bares the cost of, and the impact of this on the development of effective arrangements, monitoring activities of invasive pests. To date since August 2017, out of its core budget, EDNRE has paid NZ\$21,723-96 to Samoa Ports Authority and Samoa Quarantine for wharfage and fumigation jobs for solid wastes and vehicle repairs sent to Apia by Nuku and individuals. The EDNRE team echoed a plea to the 2 visited Taupulega for the villages to engage the user pay system and take on board those costs which have nothing to do with EDNRE. The loophole originated from the days when Tokelau had only a couple of village trucks each and wastes shipment to Apia was very sporadic. Today shipment of wastes to Apia is on a regular basis and using Tokelau shipping fleet – MV Kalopanaga and MV Mataliki.

EDNRE proposed different approaches to address the lack of resourcing and implementation of the Bio Security Rules 2003.

One of the proposals was to revisit the Moamoa farm project, where the core function of the project was to implement Bio Security Controls with basis and justification of the Bio Security Rules 2003, and to clearly assign responsibility and authority that is justifiable as per the Bio Security Rules 2003.

EDNRE also identified a number of protection elements of invasive pest that should be consistently resourced, including, research and development, on-going management activities such as fumigation units on each atolls, reintroduction of Passengers Arrival Cards, import permits, and public education and awareness. Others suggestions was assigning a permanent environmental officer for each nuku, to work closely with EDNRE.

Another, more direct comment was for cost recovery by the department in regards to nuku and private waste fees, and for each nuku/individuals to borne all cost of waste shipment

to Apia (Fumigation, wharfage and handling, Freights, Transport cost) while EDNRE monitors these activities.

During the consultation a strong theme across both taupulegas, that invasive pest risk needs to be addressed consistently across all levels of nuku and government departments. It was noted that the division has been working with taupulega, fatupaepae, aumaga and schools to develop TISSAP. This process has been underway since 2013.

It was also outlined that inconsistent bio security practices across Tokelau have caused increased costs, time delays, uncertainties and misunderstandings.

Going forward,

Majority of the taupulega members support the introduction of regulations as stipulated in the Bio Security Rules 2003, and encourage the management of invasive pest risks at all levels. Some comments by taupulega members considered that current guidelines lack 'teeth' and there is little incentive for, passengers, business owners, vessel operators and agents to comply with Bio Security guidelines. It was also noted the development of any regulatory measures should consider the invasive pest risk from all bulk and coop goods.

In order to protect Tokelau from invasive species, we need to first protect our borders then only focus on addressing the current issues within our borders. Without doing so, we would anticipate new and introduced issues to be on the rise.

Therefore, it is our plea that everybody has a clear mindset and work together to achieve our national goals that was long set in 2003.

♦ Hans Wesche



Matiti School Career Day 2018

Matiti School held their annual Career Day themed 'Education for Life' at the Talikilagi hall on the 1st of June, 2018.

Career Day is an important occasion for students of all ages to learn more about the career pathways that they have considered. As well as discovering other employment options that may hold their interest from employees themselves.

It is also a day for the employed to demonstrate and educate the children about the abundance of career options, the steps to take to achieve them and their services in the community.

The program began with a word of prayer conducted by Rev. Halehio Lui then followed by opening remarks from Matiti teacher Mrs. Losa Viliamu, few words from an elder Mr. Vaha Tavite and finally an introduction from all sectors on Nukunonu.

Students were taken on a tour around each sector stall in Talikilagi hall and also in work-places.

EDNRE unit was one of such place where students of Matiti visited.

Therefore, staff of EDNRE put in their effort to decorate the small office space with a display of bio-security and tourism equipment, handicrafts and booklets specifically for each division.



Plumbing service unit with Matiti



Fatupaepae Weaving Demonstrations

Each staff member was tasked with different demonstration and description of the branches within the department.

Different year group arrived at EDNRE office at different time intervals to learn and asked questions regarding coral replanting, invasive species in Tokelau and tourism ventures in Nukunonu. Coral replanting was a major topic which the students learnt about in class at the time and as the day went on, it became clear from their questions that the majority hold a keen interest in this particular area including invasive species and how they can learn more about them through the department and study visits to the once ant-infested islet of Motuhakea.



Hohefina Pase with the juniors



Christian Perez with year 1 & 2

Manager of Economic Development Manager Ms Petelema E Tefoepua encouraged students to make use of this career day. "Make use of this Career Day and the many options that you have. You have the choice to choose whatever career path that you want to take in the future, no one else. And if in the future you are interested in economic development or protecting the environment, this is the place to be" said Ms Tefoepua.

Principal of Matiti School Mrs Maliana Luka thanked everyone for their support in taking part in this important programme for the students.

Mrs Luka also conveyed the importance of career day and nuku participation in the guidance of the children towards their dreams for their better future and the better future of Tokelau.

The Career Day initiative in Nukunonu came into place in 2017 at Matiti School and is now an ongoing program for the school.

The program was concluded by a zumba ice breaker coordinated by the Health Department at the Talikilagi hall.

◆ *Teagai Perez*

National Water Security Officer is working closely with EDNRE

Meteorology officer Ms Solonaima Mei has been seconded to take over the role of National Water Security Officer for Tokelau for the duration of three years. Housed under EDNRE's Environment Division, Solonaima will also be focal point for SPC funded project Strengthening Water of Vulnerable Island State and will work closely together with SPCs Water Division.

In her new role Solonaima will work in collaboration with the Department of EDNRE Meteorology team and Tokelau Health Department in identifying gaps in the existing water security system, water monitoring, raising and maintaining local awareness, drinking water safety planning and showcasing appropriate technologies for communities or household-level for appropriate water collection and practices.

The aim of the "Strengthening Water of Vulnerable Island State" project is to help Tokelau to identify the status of water security threats and issues within Tokelau and looking at opportunities for solutions based on the project outputs. Under this project Matauala, Matiti and Tialeniu had participated in a global event such as World Water day, whose theme was 'Nature for Water'. Tokelau participating in such event highlights the importance of nature as it provides Tokelau's primary source of water. It also assists in enhancing awareness on how Tokelau can contribute to keeping her environment healthy and clean as well as proper management of her water catchments at the household level. This project is funded by the New Zealand and managed by SPC.

◆ *Naima Mei*

EDNRE staff test the Tourist Boat Tifitifi



Nausori, Fiji.

Throughout logistics and arrangements the boat managed to reach Nukunonu early March this year.

The students of Matiti School were given a great opportunity to compete for a name suited for this achievement. From all the 52 entries the selection committee managed to come up with a shortlist of 6 entries and presented them to the respective Taupulega of Nukunonu for their final decision. As a result the tourism boat was named Tifitifi.

The whole cost for the boat is \$20,500.64.

Tifitifi was made out of fiber glass. It is 23ft long with a YAMAHA 2 stroke outboard motor. This boat was blessed together with the flag pole and the nursery house at the Matiti School boundary.

The meaning of TIFITIFI was presented while the audience enjoyed their refreshment.

On the 18 of June the EDNRE staff had their first test run at the lagoon with some locals willing to join as we take the Tifitifi out for its first ever run test. It was an enjoyable afternoon as the EDNRE staff cruised out into the deep to make sure the tourists will be also.

The department has confidence that this boat will help the department a lot throughout this tourism program.

◆ *Sosefina Pase*

One of the activities under the EDNRE Annual Work Plan is to provide island tours which includes both village tours and lagoon tours for visitors, tourists and anyone wanting to explore the beauty of Nukunonu. In order to achieve this initiative with low cost in the long run, the department arranged for a Nukunonu Tourism Boat. From the information gathered the department ordered a boat from the Silverwater Fibreglass at



their
cos-

Fakaofu joins the world in celebrating World Environment Day 2018

On June 15th 2018, Fakaofu village joined the global UN movement in celebrating World Environment Day 2018.

World Environment Day is the UN's most important day for encouraging worldwide awareness and action for the protection of our environment. Since it began in 1974, it has grown to become a global platform for public outreach that is widely celebrated in over 100 countries.

Above all, World Environment Day is the "people's day" for doing something to take care of the Earth. That "something" can be focused locally, nationally or globally; it can be a solo action or involve a crowd. Everyone is free to choose.

Each World Environment Day is organized around a theme that focuses attention on a particularly pressing environmental concern. The theme for 2018 is "Beating Plastic Pollution"

In Fakaofu, the day was planned to raise public awareness on the impacts of plastic pollution to the ecosystems, biodiversity and the overall health of the people of Tokelau, and also to promote the worldwide awareness on how to protect the natural environment

Tialeniu School on Fakaofu took part in the celebration with posters and poem competitions among the students. The school also hosted a fashion show modeling outfits made of plastics.

The activities started with a morning prayer conducted by one Tialeniu staff member, followed by exchanging words of greetings between the principal, Taupulega member and the environment officer.

The students were divided into 3 categories—primary, intermediate and secondary students and were allocated their tasks of collecting any form of plastic around the school compound and surroundings. The exercise was to assist enhance student's awareness on the bad habits of plastic littering not only in schools but also home surroundings.

Students also took part in the poem and posters competition to showcase their understandings on environmental issues affecting them.

They drew posters of marine species dying as a result of consuming plastics. Some very strong messages from their poems highlighted the importance of reusing, recycling and refusing something that cannot be used again.

The fashion show showcased the talents and creativity of students which proved to be an eye catcher in demonstrating the plastics through

tunes. Prizes were awarded to the 1st, 2nd, and 3rd students in the entire 3 categories.

One of the Taupulega members thanked everyone for participating in commemoration of World Environment Day. "E he ko na kupu kae ko au fakatinoga" said the Taupulega member. He stated that it's not what you talk about that matter, but it's how you react to the situation.

He also expressed his sincere gratitude to the department for organising such activity which was an awesome day of learning for everyone.

Environment Officer, Ms Meleka Mativa also thanked everyone who took part in celebrating of world environment day. "Fakafetai lahi lele ki te Taupulega Fakaofu mo te koutou hapoti tenei kua mafai oi fakatino te aho ote hikohikomaga vena foki te kaiga faiaoga ma te koutou lagolago mai ke mafai e na tamaiti oi fakamanatu kae ke iloa e ki latou te taua o tenei aho", said Ms Mativa.

The program concluded with a lunch provided by the Environment department and Nukufou Sport Association.

The Fakaofu community also came together to celebrate this important day by cleaning up their lands at Fenuafala islet.

◆ Meleka Mativa

◆ Margaret S Paul

Village Youth of Nukunonu Marks World Environment Day 2018

On June 21 2018, 'BEAT PLASTIC POLLUTION' spelled out in plastic bags screams from a colourful banner as Nukunonu Youth members danced and singing songs around the community in costumes made from plastic waste, to convey the message of plastic pollution.

The Nukunonu Youth participated and organised the event in collaboration with the EDNRE Environment Division and started off the day in attendance of the daily morning church service in their renowned green and white uniform.

After the church service, Environment Officer Christian Perez handed out large trash bags to the youth as they progress to the second part of the programmed—collecting plastic and any non-biodegradable trash scattered around the village.

Youth participants divide into small groups and begin to collect rubbish, covering the area from Matiti School at Muli to the St Joseph Hospital at the southern tip of the island.

Despite the gloomy morning and rain drizzle, the island youth members and EDNRE environment staff marched until more than twenty bags of trash had been filled and emptied into roadside bins by the end of the activity. After collecting trash, an Environment Day banner created by EDNRE staff members was secured to the front of the Nuku truck and the youth donned costumes made from plastic materials marched behind the truck chanting



Youth members with environment officer collecting plastic wastes



messages relating to the environment day awareness.

They paraded through the community from the hospital to the school and made stops at the Fatupaepae centre and Niuto offices to perform fateles,

showcase their creative costumes as well as spread the message of the day to the people.



Matiti students addressing beating plastic pollution

Matiti School was the last stop and youth leaders and the environment officer addressed the students and staff of Matiti about the importance of protecting our environment by removing plastic waste from our shores.

After the procession, youth members and EDNRE staff assembled at Talikilagi Hall for a final presentation by our environment officer and a group activity in composing ideas to alleviate plastic pollution on the islands.

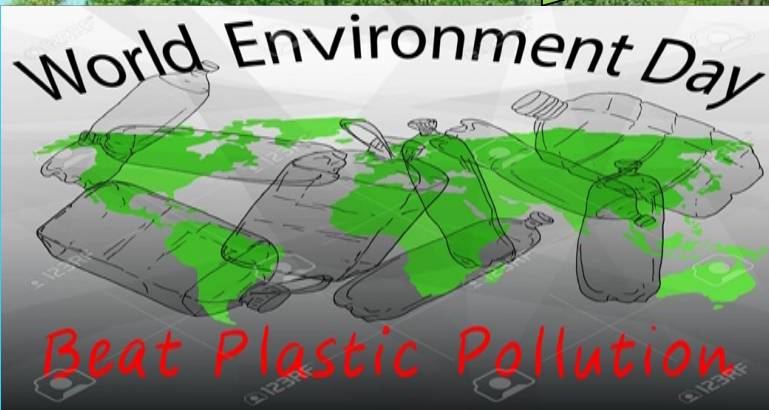
Youth members were again divided into two groups to discuss and produce interesting ideas to combat the issue as well.

"Plastic pollution has become a major problem not only on our lands but also in our oceans and it is imperative that we do something about it before it is too late," Christian Perez says in his presentation to the youth.

As the program comes to an end, youth members leave with a new understanding and awareness of this issue in our tiny nation and it is with hope that we, together with our community, can commit to beating plastic pollution.

◆ Teaagaitupu Perez





Atafu Environment Day

"World Environment day is very important in our life. It is the day when we get aware of issues related to our environment and pledge to keep it safe for our better future. We should take care of our environment all through the life. It can be done only when we will keep our eyes open and be active to bring some positive changes within ourselves and environment". The encouragement word from the department of EDNRE for this year's environment day. The theme of the day, "Beat Plastic Pollution".

Atafu observed the Environment Day this year on the 23rd of June 2018. It was new for some locals to wake up early on Saturday to gather at Lotala Hall, when Saturday's usual commitments in families, men



went out fishing, women do house chores but as for the community of Atafu they gathered together for a village rubbish collection from the other end to the other end of the atoll. There were members of the Taupulega, aumaga and Fatupaepae.

The opening remarks of the day was given by Faafetai Taumanu (chairperson for the Taupulega), followed with the programme from the department of ENDRE. Sacks were marked in five categories, metals, cans, glasses, plastics and general waste, gloves were also distributed. The village were divided into 3 groups, Titanika, Utulaina and Palataiho. The work was started at 7:00am in the morning before sunshine. It was a very productive day to all those who took part.

According to the leaders of each groups, 95% of waste collected were plastics, mainly on the coastal sides. There were uncontrolled garbage dump near the coastal sides and under the banana trees area. The Director of EDNRE department thanked the village of Atafu for contributing to the waste collection to mark the environment day for this

year 2018. He strengthen the village that this work is not a one day work, it should be an ongoing day because it will benefit the environment of Atafu and this will contribute a lot in health of people and the limited resources on the island. It's a great example that we must set for our children and the future generations to come. It is time we

devote most of our time in these issues regardless the busy schedule and other commitments we have, but it is time for us to know and honor our environment.

The village gathered again at Lotala hall, cold water was distributed and cold ice-cream. The Director of EDNRE Mika Perez who also took part in the activities represented the Minister and Department of EDNRE in thanking everyone for taking part in commemorating the UN Environment Day 2018. In his thank you note, he alluded to the overarching goal of Tokelau's Strategic Plan 2016—2020 which aims at *"Healthy Communities and Opportunities for all"* He further added that the referencing of TNSP Vision for *"Healthy Communities"* does not only refers to human being health. *"We've got to have healthy oceans, healthy reefs, healthy lagoons, healthy forests and healthy land ecosystems. If all living creatures within all those mentioned ecosystems are healthy, only then can we achieve fully the goal of the TNSP"*.

According to some members of the community, they preferred to have another day lor week ike this in the future



◆ Betty Tuilotolava

Matiti School integrated new school program this year

This year marks an important initiative by Matiti School on the island of Nukunonu by having their students learning first-hand on issues of their interests. In May this year, the school met with all government departments on the island to work on the idea of having students attached with the departments for a certain period of time.

This meeting was basically on a new program the school wants to implement called 80% /20%. The 80% comprises of the core subjects and the other 20% are for the integrated learning. The program is designed to help students understand the reality of things happening in their surrounding and also learn from the experts in certain fields and issues. This program is only for years 8 -11 which commenced on the 8th of June up to 22nd of June from 8:30 am to 10am, on every Friday.

Since the implementation of the program, twelve students opted to work with Environment and Economic Development sector.

The students with the assistance of EDNRE staff discussed and tried to identify real life issues in the selected sector and how to deal with them. Students were expected to be capable of facing those selected real life situations by the end of their attachment.

Two female students—Solana Petelo and Alavina 'Ala chose the Business Sector under Economic Development, and were accompanied by their Teacher Mrs Fagauila Ikapoti.



L-R: Alavina, Faga(teacher), Solana

They brought with them key research questions which were:

- (i) Are Our Small businesses thriving?
- (ii) How can we apply our learning to a business idea for the teacher's conference?

Staff of the department's Economic Division assisted the students in their key research providing them with feedback and important information that they needed. They helped the two students on how to collect information, analysing those information and using those analysis to answer the key research questions.

The remaining 10 students under the leadership of their teacher, Ms Elaine Lameta chose the Environment Unit for their researches. Environment Officer Christian Pérez assist these students with their Research .

This group of students went on a field-trip walking around the coastal area of Nukunonu to learn the environmental issues faced by the locals most of which are



Coastal observation field 1 & 2

created by humans. Ms Lameta said that “the purpose of this field trip was for the environment students to observe the different factors interacting in particular environments and their impacts.

“This is to provide them with some foundational understandings for their specific research topics that include coral planting, coral bleaching, coastal water pollution and yellow crazy ants,” Lameta further added.

According to Lameta the data collected from student observation and survey around the village plus chemical testing and other findings will be presented in Term 3.



Coastal Erosion

- ◆ Faioa Ala

FAO projects in Tokelau

Food and Agriculture Organisation (FAO) has been working closely with Tokelau for sometimes in implementing projects in Tokelau through EDNRE.

The coastal rehabilitation project in building nursery in Nukunonu was a two year project under FAO funding and had just successfully closed down.

Its Objective was to grow enough seedlings of the Pua tree as well as vegetables and to distribute to the other two villages.

Strengthening capacity in home gardening, healthy food awareness and effective biosecurity for Tokelau is another project funded by FAO. It is to encourage households to build their knowledge and interest in planting their home gardens and livestock in order to reduce the importing of garden food from overseas which can also affect the biosecurity of Tokelau.

Construction of nurseries in Atafu and Fakaofo was one of the improving incentives of food and nutritional security which have been partially completed.

The Department is working in partnership with households who have shown interest to plant trees based on their identified thematic areas of food security, and coastal erosion.

However, EDNRE is following up with FAO to complete the partially nursery on the two islands.

Few households of each village have been beneficial from such projects as it helps them in reducing of importing garden food from overseas.

EDNRE will continue sustaining the nurseries when the project wraps up at the end of the year 2018.

- ◆ Loia Tausi
- ◆ Margaret S Paul

Village Waste Management Updates

Waste Champions Step Up Nukunonu Operation

The Nukunonu waste management team led by Mr Tufele Tufele have been very determined, proactive and committed towards removing the waste present on land, and always working to pack them for shipment to Samoa via the MV Kalopaga's ongoing voyages to Tokelau.

The only issue the team usually face is when our village does not receive our steel bins

for waste transportation, meaning the team has to improvise as much as they can; looking at other safe alternatives like securing items to pallets and placed within ply wood boxes ready for shipment to Apia Recycling Company in Samoa.

This operation; that is the waste transportation to Apia, really helps to minimize the environ-

mental impacts that our village faces from this type of waste pollution.

"We no longer just dump our waste all over various places at the Vao area but now are taken by the village waste management team to the waste centre also located at Vao, to be carefully segregated and packed for shipment," said Tufele Tufele.

From there EDNRE office officially informs Apia Recycling notifying them respectively, to have a fair understanding on what is to be expected once the waste arrives on vessels from Tokelau such as the MV Faasefulu and the MV Kalopaga.



Village Waste Champions collect rubbish 3 times weekly

We managed to send 10 boxes of solid waste to Apia in the month of May.

♦ Christian Perez

Waste update from Fakaofu

To ship solid wastes to Apia depends heavily upon the availability of our wooden & aluminium containers hence their swift return from Apia is so important.

I therefore would like to acknowledge the hard-working men & women from the waste management team on Fakaofu for their endless work in collecting and sorting solid wastes to be shipped to Apia for recycling, not forgetting EDNRE team in Apia for the great effort they put in in coordinating the wastes shipments right through to destination.

♦ Meleka Mativa

Atafu Waste Update

Atafu atoll are gathering waste much faster than they can safely get rid of it, and this is affecting their environment. This is because there is no particular flow of waste shipment to Samoa. The waste on Atafu depends on how much space on the Kalopaga vessel to ship boxes to Apia, and the other problem is that, it depends on the returning of waste boxes back on the island for more waste to go to Apia. The waste on Atafu contains a large number of recyclates (such as aluminium, tin cans, plastic bottles and glasses), all these are taken to Pacific Recycle for recycling and whatever revenue from these wastes are paying to the Taupulega.

There is a proportion of plastics on the atoll. A lot of Vailima bottles are being stockpiled and waste workers are trying to send them to Samoa. The waste collection system generally operates well with collection 4 days per week, but the workers are not well protected with proper and safety equipment. This inconsistency should be addressed to ensure that the reliability and efficiency of the waste collection system is not adversely affected. Littering of cans and especially plastics can be observed throughout the community. Plastic waste is burnt, and some are observed to be

dumped at some family's backyard and can affect the sea. Disposable nappies are taken by residents to a community hole where they covered with soil, when full they dig another new hole. In the month of April to June, there were five waste shipments for Atafu to Samoa. The waste management officer working under the department of ENDRE is working closely with the waste workers in trying to provide simple training in recycling and improving the operating system of waste on Atafu.

Awareness programme is under way for school, and other organizations in enforcing ways to minimize problems from waste such as health issues, pollution and the impact on the environment. The aims in the future is to reduce and promote a clean environment, increase public awareness of the risks caused when there is numbers of waste on island and promote proper disposal in schools and the community. More work is needed to improve waste management approaches in Atafu

♦ Betty Tuilotolava



TOURISM NEWS

Small Scale Tourism is one of the priority area under EDNREs Economic Development Policy & Action Plan 2017 – 2020.

This activity's main focus is to targets the visitors and tourists who make Tokelau their holiday destination. It involves both village and the lagoon tours.

EDNRE piloted the mentioned tours on Nukunonu in 2017. It is envisaged to be implemented in Fakaofu in 2018/2019 FY then Atafu in 2019/2020 FY. They surely bring a lot of visitors who are interesting in these kind of tourism tours.



The main purposes for this initiative are to; 1) encourage and promote Tokelau's culture, traditions, pristine environment and unique handicrafts, 2) documentation of information on historical events and landmarks of each



Nukunonu Tourism Brochure

Nuku for future generations and especially to 3) provide equal opportunities for all.

The department increase the awareness of the visitors and the public by distributing the Nukunonu Tourism Brochures to the visitor on the MV Mataliki also when they arrived on Nukunonu but they will be available at the EDNRE Office at any time

This program was being piloted on Nukunonu with 3 tours begin on the 16th May during the NCD Summit, 17th July during the Mid GF Session and 3rd November during the last GF session for 2017

There were 15 visitors took part in these tour-

In early June, the department managed to bless its tourism boat, with a hope to implement its tourism program properly without any disturbances. The Tifitifi will put first any activities under the EDNRE tourism program but can also give an opportunity to be used by the public if it is available at that time. There is a rental agreement need to be signed by any-



Front Row (L-R): Visitors (NCD Summit), Margaret Sapolu, Vanikai
Back Row (L-R): Leuta Tamo, Solonaima Mei, Petelema Eti

one who wants to use the Tifitifi at stated cir-



From (L-R) Iapi, Administrator Officers, Former Administrator Dave Nicholson and Mikaele Perez

cumstances cover in the policy. This form will be signed at the EDNRE office from 8.30am to 12pm of working days. The Tifitifi can be used by the nuku as a whole, department, organisations and families with a uniform rate of \$50 per day excluding petrol. For the safety of the



Tifitifi, it is only allowed to be used by more than 4 people.

The department appreciates the support by the nuku and looking forward to working together more on this initiatives.

♦ Petelema Eti

HILARIOUS CORNER

Bryan, had worked all of his life and have saved all of his money. He was a real miser when it came to his finances. Bryan loved money more than just about anything, and just before he died, he said to his wife, Emma, 'Now listen, Emma, when I die, I want you to take all my money and place it in the casket with me. I want to take my money to the afterlife.'

So he demanded that Emma promised him with all her heart that when he died, she would put all the money in the casket with him.

Well, of course, one day he died. Bryan was stretched out in the casket, Emma was sitting there in black next to her closest friend. When they finished the ceremony, just before the undertakers got ready to close the casket, the wife said, 'Wait just a minute.'

Emma had a shoe box with her, she came over with the box and placed it in the She

casket. Then the undertakers locked the casket down and rolled it away.

Her friend said, 'I hope you weren't crazy enough to put all that money in the casket, Emma?'

Emma replied with a twinkle in her eye, 'Yes, I promised. I'm a good Christian, I can't lie. I promised him that I was going to put that money in that casket with him.'

'You mean to tell me you put every cent of his money in the casket with him?' spluttered the friend.

'I sure did,' said Emma. 'I got it all together, put it into my account and I wrote him a cheque.'

Biosecurity Updates

NUKUNONU BIOSECURITY UPDATES

During the start of the month of June, our Nukunonu based EDNRE staff sat down with our Director; Mr Perez and discussed the progress of biosecurity issues within Nukunonu. An important outcome from our discussion was to make a vital head start and continuous step forward to highlight one of the main priorities within the Environment Division Annual workplan; to improve and strengthen standard Biosecurity issues and enforce existing Bio security legislation in Tokelau.

It presented a great opportunity and challenge ahead, in itself, given most of the members of our community are not all on the same level of understanding in regards to Tokelau Biosecurity measures. A Tokelau Biosecurity consultation with our Taupulega was also held prior, led by director and senior bio security Officer based in T.A.L.O Apia; Hans Wesche.

The purpose of this consultation with the Taupulega, was to emphasise the importance of Biosecurity and the risks it poses towards affecting our environment from the presence of invasive species. And if we are not careful enough to deal with the threats it can potentially present, there can be consequences. The presence of invasive species in Tokelau is usually a case of having free passage and undetected on board from international transport pathways from Tokelau's main port of entry that is Apia via sailing (MV Mataliki, MV Kalopaga etc).

Therefore it can cause great damage towards our main agricultural crops like coconut trees and home gardens. From this consultation, our village Puluenuku Mr Patelesio on behalf of Taupulega Nukunonu, topped it off by declaring their full support for Biosecurity procedures to be strengthened and implemented by EDNRE Environment staff in collaboration with our Taupulega authority, given that our environment is a core value towards everyday life in Tokelau.

Therefore, on the 7th of June 2018, our EDNRE Staff led a team towards the arrival of the Mataliki that day to carefully observe and inspect the agricultural commodities brought in from Apia.

As our Taupulega gave their full support from the consultation, the initiative behind our quarantine checks was to make a step to start standard Biosecurity procedures in Tokelau, in the hope of making this a successful continuous progress. From that day there was good feedback from the departments usually present during a boat arrival day; Immigration and

the Police. This gave further confidence knowing that our village is starting to be aware and seeing first hand this operation taking place. There was not much of a hassle from members of the community because it was a first time trial, and also a great opportunity to put into action the knowledge and understanding we gained from the FAO Biosecurity and Samoa Quarantine training we attended in Apia last May 2018.

Special thanks to my colleagues for their sup-



port and great assistance, a job well done was achieved on that day. Like I have mentioned this is a start to what I believe will be a great outcome for the whole community in terms of Biosecurity awareness in Tokelau

◆ Chris Perez

FAKAOFO UPDATES

Biosecurity on Fakaofu is managed by two biosecurity officers working under the Taupulega and one from EDNRE. Their work is to check the luggage's of those who travel from overseas for harmful animals or plants and arrange for, or help with, pest destruction and control.

During the month of May one of the Tapulega Biosecurity Officer attended a Biosecurity Workshop held in Samoa. The workshop she attended proved to be an eye opener and gave her a clear understanding of the procedures needed to be done to protect our borders from invasive species. She then reported back to the Taupulega indicating how useful the workshop was and gave a brief insight on the changes that will occur within the coming months. The Taupulega agreed with what was proposed and cannot wait to see the changes unfold.

Three weeks ago, one of the officers on duty seized three batches of Taro leaves found in a card box from Samoa. These taro leaves contained ants which were described to be Odorous house ants (*Tapinoma sessile*). The officer on duty was able to eradicate his findings by spraying it with Mortein and then later on burning it.

The team here on Fakaofu carryout biosecurity checks every time the boat (MV Mataliki & MV Kalopaga) arrives on Fakaofu.

The team would also like to take this opportunity to remind you all that you are not allowed to import taro, cassava, yam and other food crops into Fakaofu unless it is peeled and frosted, bananas are also prohibited.

This helps to minimize the chances of invasive species invading our borders.

◆ Meleka Mativa

Atafu Biosecurity Update



Mikania growing on the coastal side



Ruta Peleha (Biosecurity Officer during checking)

An update on the biosecurity work on Atafu is continue based on the proposed biosecurity consultation this month.

This is mainly to protect our limited resources from biological threats that can cause harm to people's health, life, food and agriculture, the environment and economy.

The clearance of cargoes from vessels are experiences by the community in terms of checking cargoes with harmful organisms that can enter on island through different ways.

The people of Atafu are now fully aware of the importance of the biosecurity work that the department of EDNRE is trying to implement, and the biosecurity officers are working closely with the community in keep eyeing on new invasive species around the island.

This month Ray Pierce was travelled to Atafu to develop the Tokelau Invasive Species Strategy and Action Plan. Taupulega, Aumaga and Fatupaepae had a chance to have a consultation with Ray.

They supported they had lot of input in the TISSAP. Thoughts were shared on new invasive species that are now seeing on Atafu and some invasive species that already cause harm on the island. One of the problem facing with most families is the Singapore weed, it's everywhere. SPREP organisation are ready to provide trainings to biosecurity officers in controlling the problem. During group work with the Taupulega, Aumaga and Fatupaepae, some they came up with risks for some of the invasive species that are now on island and it was interesting how they come up with their own solutions.

Dr. Monica Gruber was interviewing families with the yellow crazy ants. As known back in the year 2008-2014, Atafu Island was facing a serious problem with the yellow crazy ants. The treatment was done in year 2015. According to most families who were interviewed, they haven't seen any more YCA after the treatment in 2015, which few families they said that there are few at their backwards but they are not causing any more harm as before. Biosecurity officers on island are still keep eye out for yellow crazy ants and other ants that might cause problems to people's health, food security and the environment.

During our island visit with Ray and Monica around the island we found a new invasive plant called "Makinia", photos were taken and send to SPREP for clarification. The Makinia will be treated together with the Wedilia or the Singapore Daisy when the training will be done around the month of September.

Biosecurity officer under the department of EDNRE is trying to spread the word and looking at ways to establish high standards of biosecurity work on the island of Atafu so the whole community will aware and get use to the new system for the goal set, to free Atafu and the whole of Tokelau from the invasive species.

◆ Betty Tuilotolava

Malo ni from our TALO Biosecurity team here in Apia.



Since our last Utuola newsletter, we have not had any interceptions reported, which is a positive indication that everyone is doing their part in protecting Tokelau borders.

Our team here in Apia is writing up Standard Operation Procedures for all levels of Biosecurity, to create consistency in how biosecurity/quarantine tasks are performed. They consist of clearly documented, step-by-step procedures and checklist that are easy for everyone to follow and greatly reduce the chances of invasive pests entering Tokelau. Here are 5 reasons why Biosecurity SOP's will help us better protect Tokelau from invasive pests.

1. They facilitate communication

Well written Biosecurity/Quarantine SOPs clearly communicate responsibilities to all biosecurity officers. They don't have to rely on their memories, or all the things they learned in their trainings.

2. They provide consistency and quality control

SOPs ensure that no matter what day the vaka departs Apia or arrives on each atoll, or which biosecurity officer is working, the tasks that protect Tokelau's borders effectively will be done the way that's outlined in the Biosecurity Rules 2003. They don't hamstring biosecurity officers or turn them into robots. Rather they provide security because each biosecurity knows what's expected of him or her, rather than guessing what needs to be done daily.

3. They facilitate cross training

Biosecurity officers on island and Apia who are the only staff who normally perform certain biosecurity tasks, these SOPs will allow other EDNRE staff to fill in and complete tasks they don't normally perform if biosecurity officers are on leave or sick.

4. They support peer accountability and coaching

Biosecurity SOPs will be clearly documented, biosecurity officers can help and coach each other when learning new processes, rather than relying on a manager to do so. They also give biosecurity officers the opportunity (and grounds) to correct/redirect their peers when tasks aren't being performed correctly.

5. They provide Biosecurity officers with the motivation to protect Tokelau from Invasive Species

Well written Biosecurity SOPs not only clearly outline the HOW of procedures, but also the WHY. When you communicate sound reasons why biosecurity officers should perform tasks as per the Biosecurity Rules 2003 way, officers are more likely to do so.

◆ Hans Wesche

Whos Who in Nukunonu Business Community

Small business in Nukunonu is one of the Economic initiatives that the Economic Development Unit is focusing on. People on the island of Nukunonu are benefiting from the Small business initiative developed by the Economic Development Unit.



Pa-Tamiano Store

The initiative was developed to assist people on Nukunonu in setting up their small business in order to earn money to support them. As part of this initiative, people need to get an approval from the Taupulega's office in order to start up a business on Nukunonu. A registration fee will then be paid to the Finance's office once the business registration is approved.

Since this initiative kick-started the Economic Development Unit collected data for registered businesses on the island and found out that there were 19 of them, selling various products. However, the latest update for businesses in Nukunonu for the month of June 2018 found out that only 16 businesses are still operating. This shows that Small businesses on Nukunonu were gradually developing over the



Mana Restaurant

past few years and still are at the moment

The Unit found out that two businesses were no longer operating because the owner had migrated overseas while the other business owner does not have enough time to continue running the business due to other commitments.

It was also found out that there are many challenges faced by small business owners on the island. This is due to transportation of goods,

storage of frozen food items, Debtors, loss of Cargoes and Poor Handling of Goods.

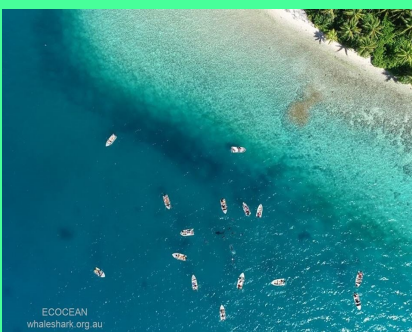
However, these challenges did not discourage the spirit of the business people on Nukunonu as they strive for the successes of their businesses in order to cater for the demands of the inhabitants of Nukunonu.

The below table shows the existing small business operators on Nukunonu

Type of Businesses	Name of Businesses	Contact
Accommodations	Luana Liki	Telehia.Perez perez.telesia@gmail.com - (00690)24140
	Te Mahina	Mika.Patelesio leata.patelesio@gmail.com - (00690)24190
	Lepeka Accommodation	Lepeka.Perez l.amatoperez@gmail.com - (00690)24147
	Falefa Resort (Taupulega)	Asi.Pasilio asi.pasilio@nukunonu.org - (00690) 24227/24119
	Lupe Accommodation	Lupe.Kilino lk.mihialofa@gmail.com - (00690) 24272
Restraunt	Te Mana Re-straunt	Litia.Maiava litia.maiava@nukunonu.org - (00690)24271
Clothings and Beddings	Lotaulova	Pule.Siale skine77@gmail.com - (00690) 24217/740138
	Pale's Business	Pale.Kolopa niity.kolopa@gmail.com - (00690) 24181
Canteen	Olatia Mini Shop	Tumua.Pasilio tumua.pasilio@gmail.com - (00690)24142
	Te Alotifa Shop	Luhia.Have luhia29tumua@gmail.com - (00690) 24193
	Alohio's Business	Alohio.ioanevaka a.ioanevaka@teletok.net - (00690)24209
	PA – TAMIANO STORE	Palepa.Tamiano akeperez75@gmail.com - (00690)24189
	Finaese	Hohefina.Pase paseh817@gmail.com - (00690) 24217/740048
	Pale's Business	Pale.Kolopa niity.kolopa@gmail.com - (00690) 24181
Laundry Products	Pale's Business	Pale.Kolopa niity.kolopa@gmail.com - (00690) 24181
	Kilita's Business	Lakena.Pepeuga lakenapuaolau@gmail.com - (00690)24281
Fishing & Sports Gears	Alohio's business	Alohio.ioanevaka a.ioanevaka@teletok.net - (00690)24209
Catering & Baking	Lakena's Business	Lakena.Pepeuga lakenapepeuga@gmail.com (00690)24281
Selling ice cream	Mele's Business	Mele Iosefo (00690) 24184

♦ Faioa Ala

Whale Shark in Nukunonu Lagoon



Mid 2017 there were sightings of a whale shark in Nukunonu's lagoon. Stories around the village were that there were 2 different whale sharks, a mother and her offspring. There was some unease amongst the elders of the village as to the nature of the whale shark, if it was friendly or aggressive, having unknown history of this creature.

Late 2017 the elders and Taupulega (village council) wanted to find out more information about the whale shark(s), the dangers, as well as a way to get it back into the ocean.

In March 2018, Director of EDNRE, Mikaele Perez notified the Nukunonu Taupulega that there was a team from Australia, who specialise in Whale Shark research, who wanted to come and assist.

The research team arrived to Nukunonu on the 10th of May 2018 and worked with the office of the Taupulega (Village Council), Pulemuku (Mayor) and the Village workforce in tracking the whale shark and studying it as well as tagging it.

The whale shark was found and it was confirmed that there was only one Whale Shark in the lagoon. It is a very young male that the research team named "Gulliver".

The research team also assisted at Matiti School, answering questions from the children of the village, as well as updating the students on the progress of their research. This was a great opportunity to give the students background information of whale sharks, as well as inform them of what is the best thing to do when the whale shark is sighted.

The team also advised the Taupulega of their findings and expressed their appreciation and thanks for their hospitality and allowing them to come and assist. The whale shark was tagged and they will be able to track it from Australia. The advice given was to leave the whale shark alone. It's still quite young, though it is feeding well. It's about 3 metres long. If it is spotted don't try and grab or hold it as it may start to shy away from humans. You can swim with it though, just at a distance. *'Enjoy it for what it is, see it in its natural environment, but don't change its behaviour'*

In the long-term, the team are looking to leave 'Gulliver' as he is for another few years and in the interim maybe start to look at ways to transport it back to the ocean.

The EDNRE Tourism Team Nukunonu, look to expand their plans to include the whale shark (Gulliver) into their tours for tourists & visitors to Nukunonu.

◆ Vanikai Filipo

EDNRE re-enforces biosecurity measures for Tokelau

The EDNRE department is enforcing biosecurity and border control measures to ensure no invasive species enter the country under the Tokelau Bio Security Rules 2003.

One of the measures is the re-introducing of the Passenger Arrival Card (PAC). The introduction of PAC will help the department track down all incoming pest and organisms that enter Tokelau.

According to a Press Release from the Manager of Environment Division, the Tokelau Bio Security Services under EDNRE, organization taking the lead role in ensuring the best for Tokelau in trying to stop biosecurity issues arise in Tokelau.

The office had draft a modified PAC and has been circulated to key stakeholders for final comments before it is endorsed and ready for use. The PAC is compulsory for all passengers traveling to Tokelau.

The department had also organized some community consultation to raise awareness amongst the people of Tokelau and they found out that there is a need for more public awareness on the issue especially with the re-introduction of the arrival card and more importantly on prevention of invasive species. The consultation was done in Atafu and Nukunonu but was not possible in Fakaofu due to the boarder closure

The Press Release stated that over the past years, Tokelau used to trade freely with the outside world with its biosecurity role quite relaxed even though the country has its a Biosecurity Rules 2003 was already in place.

"Biosecurity is emerging as one of the most important issues facing the international community and it should also be realized at the local level too," the press release stated.

The Department of Economic Development, Natural Resources and Environment (EDNRE) have the mandate under the Tokelau Government to execute and implement these rules under the Tokelau Law. Biosecurity in food and agriculture describes the concept and process of managing biological risks associated with food and agriculture.

Like the rest of the world, bio security border control plays a major role in protecting the entrance of any unwanted pests and organism into a country. There is a big need for proper procedures to have in place and be followed to ensure the detection of invasive species or any unwanted species land in a foreign land.

◆ Margaret S Paul

Deep Sea Mining Workshop, 2—4 July 2018, Nadi



Participants of the Pacific Island Deep Sea Mining Workshop

Tokelau was represented by an official from EDNRE, Ms. Loia Tausi to the above workshop that was held in Tanoa Hotel, Nadi, Fiji from the 2nd - 4th July 2018.

The 3 - day workshop focuses on enabling Pacific Island Countries (PICTs) representatives to:

- (i) deliberate and provide feedbacks on the International Seabed Authority (ISA) Mining Regulations; and
- (ii) refine the draft Regional Deep Sea Minerals (DSM) Agreement.

There were initial work carried out in to the above regulations and agreement in the previous years which Tokelau did not practically take part in but is fortunate at this round of review to be part of the gatherings of PICTs to contribute where applicable.

Tokelau maintain her status as an observer in the meeting and did not make any concrete commitments to the review as a whole but recognises the relevance of deep sea mining awareness knowledge to the people of Tokelau. Seeking assistance of expertise to build capacity in understanding the potential mineral resources there are available in the Tokelau sea bed, within its immediate continental shelf through to its wider EEZ.

In addition, the possibility of sharing information with Tokelau on the pros and cons of deep sea mining for full awareness before Tokelau can be committed in to exploration of its mineral resources and not limiting to exploring the environmental impacts of such activity.

The comments solicited during the workshop would be the PICTs' contribution to the review of the ISA Mining Regulations and will be made available to the ISA Secretariat in the upcoming ISA meeting at the end of July 2018. This meeting was also an opportunity to further refine the draft Regional DSM Agreement and this review process was be led and managed by PICT representatives. Part of these two meetings was included in closed sessions for government officials only.

The deepest parts of the world's ocean future ecosystem found nowhere else on earth. They provide habitats for multitude species, many unknown to many people including the local custodians. In the vast lightless regions of the deepest oceans, holds a vast deposit of valuable minerals in concentrations richer than most on land.

The workshop was made successful with financial assistance from donor organisation namely PEW Charitable Trust, Commonwealth Secretariat and Pacific Community

◆ *Loia Tausi*

**INTERVIEW WITH “KURESA CRAFTS” OWNER:
Mr Lomi Kuresa 3 July 2018, Atafu**



Interview by Mika Perez

Deep into the woods of Kileva on the north western side of Atafu village I find Lomi Kuresa, owner of Kuresa Crafts going about his normal routine of carving, - this time polishing minia-

ture fishing boxes, wooden fishing lures and wooden bangles. He invites me for a coffee and we chatted for a little while and he eventually agrees for a short interview. Equipped with my Samsung 7 mobile phone, I recorded the following conversation.

Utuola News: Why “Kuresa Craft” as name of your small business?

Lomi: I’ve lived in Australia for a best part of my life. I used to run a small building business with my sons known as “Kuresa and Sons Building Company”. I still hold fond memories of that beginning.

Utuola News: What made you venture into what you’re doing?

Lomi: Well, after I’ve spent around 20 years helping Atafu village with what skills I’ve gained particularly as a builder, I thought I’d do something that I’ve always wanted to do and that is to fully utilise the *kanava* wood (*cordia subcordata*) which is bountiful on Atafu and somehow be creative with it. But you’ve got to have the passion for whatever you’re doing and that’s what drives and motivates me? Passion!

Utuola News: You talk about having the passion for what you do? How can you put that into perspective using the *kanava* wood?

Lomi: Well, you hear the songs, the dances, the stories, and you see the handicrafts, the canoes, the fishing gears that are made of the *kanava* wood. When I look at the fully grown *kanava* trees dominating the Atafu landscape and then thought of how our ancestors harnessed and domesticated that wood to the best of their advantage, then why can’t we carry on that tradition? To think of it, there’s no other plant wood in Tokelau that has had a very positive and useful impact on the lives of our people even to this day.

Utuola News: I see you have old canoe timber lying around your workshop; do they mean anything to you?

Lomi: Oh yeah! These old canoes although not seaworthy anymore, like any old bugger, they’ve done their deed (with a bit of laugh). They’ve had their time and have expired but the material history they hold is so rich. That canoe over there (pointing to a canoe undergoing restoration) was owned by the late elder Reuelu Reuelu. Yes that’s him to this day! Its well over 50 years now! Who knows what activities went on on that canoe (laughing) but one can be sure knowing that he was a master fisherman and that canoe must have hauled in tons and tons of deep sea fishing species – yellow fin, wahoo, barracuda, skipjack you name it! It must have brought home tons and tons of coconuts from the outer islands. It was the means of lagoon transport and fish provider for the family and who can argue with all that history?

Utuola News: Coming back to our topic, you alluded to “being creative with the *kanava* wood”, what do you mean?

Lomi: If we were still using the primitive tools that our ancestors and forefathers were using then there’s very little creativeness in it is there? I am very fortunate to have brought with me my electrical tools when I relocated to Atafu. I see yester years carvings being hindered a lot by what tools were available to them. For an example what tools they used to make a small canoe may have taken them a week to make. I can get over that in a couple of days using modern tools. Those very old canoe timber, I use them to make coffee tables, pen holders, jewellery boxes, envelope openers, imitation black mother pearl lures, I just do a little bit of sand papering, polish it and timber looks brand new. So, old canoe timber still have value. Creative really is applying new methods to maintaining traditional art.

Utuola News: What do you think are some of the barriers to your business?

Lomi: There are so many social investment activities that in a communal based society like Tokelau, one must adhere to the rules and sometimes there are vessels from Apia to unload, there are the Taupulega meeting engagements! It’s finding quality time to get on with it aye!

Utuola News: What and where would be a best place for the Taupulega to start in terms of promoting the private sector, people like yourself wanting to get some recognition for time allowance to do what you are doing with minimal distractions?

Lomi: A good place to start is to actually pool together the small business operators to become an entity involving all the formalities of an official NGO with proper leadership. Membership fee will be a requirement as life blood of the organisation. Once that is in place, then some recognition may be guaranteed particularly from the Taupulega.

Utuola News: What is your expectation of EDNRE as an agent for promoting small business development?

Lomi: I fully appreciate the work that the Department of EDNRE is doing in encouraging businesses like Kuresa Crafts to continue? The incentives they strive for in keeping business operators particularly small local made production focus on what they are doing and also providing an avenue for an extra source of revenue. Not only that, I have heard a lot of conversation post-summit about the renewal level of understanding and appreciation by the locals in regards to the natural environment as a result of the messages that were echoed in the summit about sustainability and being small?



Photographs by Mika Perez

Utuola News: Are you happy with what input and output you are making?

Lomi: Look, Im an old man now (big laughter)! I see this as hobby with full of passion! What input I make towards Kuresa Craft, I am happy with the result. But passion is the key!

Changes to EDNRE Tulaele 2 Units Accommodation in Apia

The public is hereby advised that, due to unprecedented bookings received from people in Tokelau, New Zealand and Australia requesting reasonable lodging rates in Apia, EDNRE wishes to announce the following changes to the previous announcement. These changes became effective as of 1 May 2018



Tulaele 2 Units Accommodation in Apia

Location: Tulaele - From Apia, first road turning left after last set of traffic lights, off the main highway towards the airport.

Rates: WST\$80-00 per day inclusive gas refill and electricity.

Payments: Tenant to deposit whole week rent due every Friday before 12pm at Finance Office into CODE RV.0100.1100 (please ask for a receipt)

Bookings: Pre-booked basis only.
Bookings from Apia and overseas, please call:
Hans Wesche on Mob (685) 777 1515, 20822/20823 or email address,
hans.wesche@tokelau.org.nz

Bookings made in Tokelau contact the following (they will contact Hans in Apia)
EDNRE Office Nukunonu – Petelema Eti Mob (690) 730075
EDNRE Office Fakaofo – Siauala Paul Mob (690) 730348
EDNRE Office Atafu – Betty Tuilotolava Mob (690) 770394

Health Requirement: 5 persons including children may occupy Unit 1 at any given tenancy period
7 persons including children may occupy Unit 2 at any given tenancy period.

Long term tenancy (8 weeks or over): NOT permitted.

Upon arrival the Tenant will sign an “Agreement Form” holding the signatory accountable for the overall security and safety of the Unit and occupants.

Occupants are advised to read and adhere to the accommodation rules pinned up outside the Units.

Please Note: EDNRE staff on overseas meeting transit is first priority

Fakafetai lahi
EDNRE Tulaele Accommodation Management Team
Department of Economic Development, Natural Resources and Environment

Outlook for Tokelau issued by (NIWA) Research for the month of May- July 2018

The ENSO situation: There is a significant shift in rainfall patterns over the western equatorial Pacific and Maritime Continent, combined with warming of equatorial waters, particularly in the subsurface and east of the Date Line and ENSO-**neutral is expected to continue over the next few months**: the international consensus forecast models favor ENSO conditions emerging 75% chance in May-July 2018.

Rainfall forecast for Tokelau in the next 3 months: Below or well below normal rainfall experienced over some of the last several months. Normal or below normal rainfall is experienced over some of the last several months. Normal or below rainfall is forecast over the next three months. There is a potential water stress for the next 3 months. Refer to Figure 1 below:

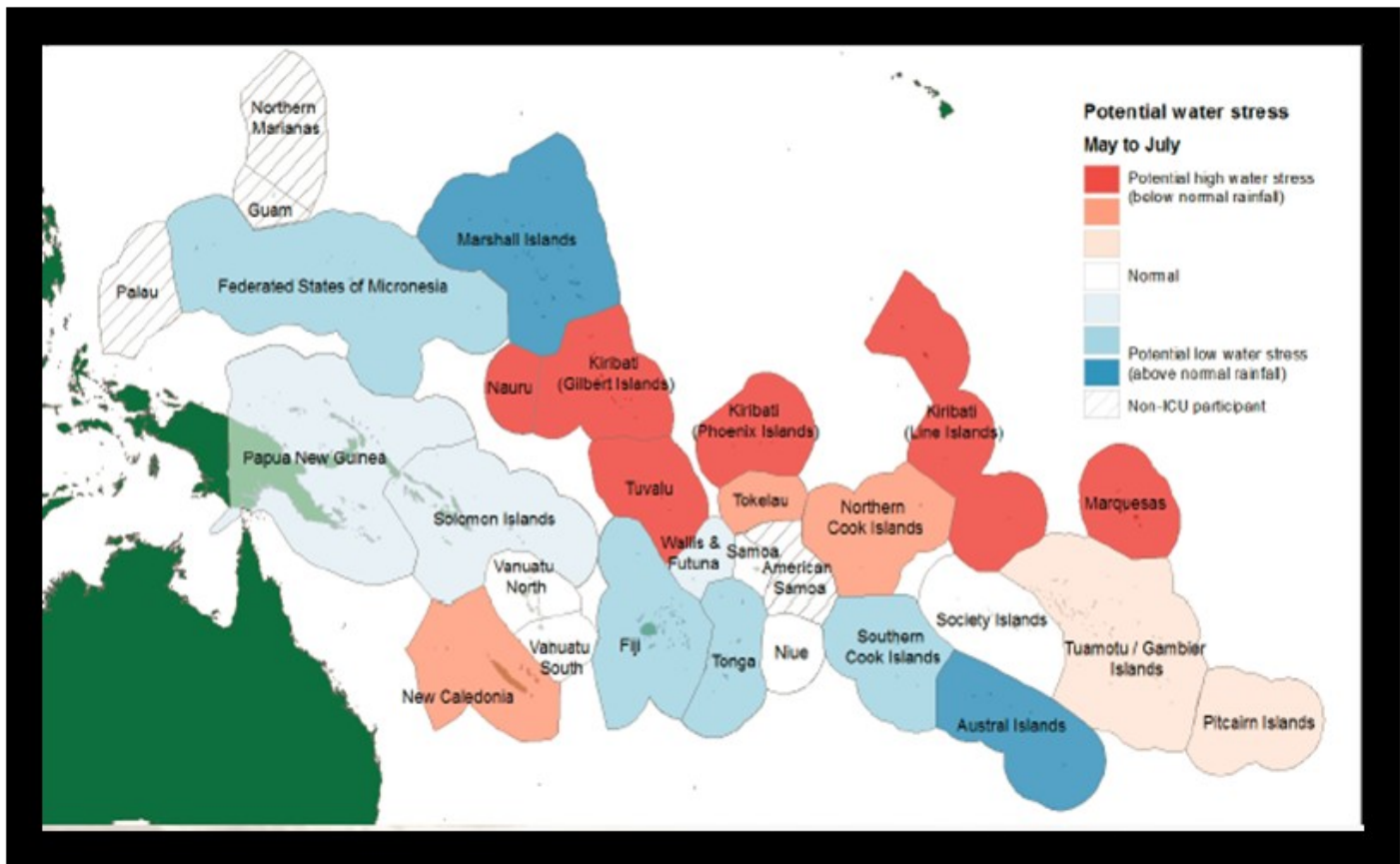


Figure 1: Potential water stress for May-July 2018

The public is hereby informed and to take note of this outlook for the next 3 months noting below normal condition continues to prevail throughout the country. **USE WATER WISELY**

Director of EDNRE/Chief Editor

Mr Mika Perez

Tel. 22218

Email. mika.perez@tokelau.org.nz

Manager of Economic Development Div/Editor

Ms. Petelema Eti Tefoepua

Tel. 24233

Email. petelema.eti@tokelau.org.nz

Manager Of Environment Div/Editor

Ms Loia Tausi

Tel 22218

Email loia.tausi@tokelau.org.nz

Tourism Officer Fakaofu/producer

Ms Margaret Siauala Paul

Tel. 23231

Email: siaualapaul@gmail.com

Journalists

Ms Meleka Mativa

Ms Solonaima Mei

Ms Sosefina Pase

Ms Faioa Ala

Mr Vanikai Filipo

Mr Christian Perez

Ms Teagaitupu Perez

Ms Betty Tuilotolava

Mr Hans Wesche

- ♦ Water Quality Train the Trainers Workshop
- ♦ PWWA Conference
- ♦ General Fono July 2018 Highlights
- ♦ Updates on Village Accommodation, Hotels,
- ♦ And many more

All content material contained in the Utuola E-News Production is copyrighted to the Department of Economic Development, Natural Resources and Environment (EDNRE) and must NOT be reproduced or printed in any form without the prior permission of the EDNRE Department.